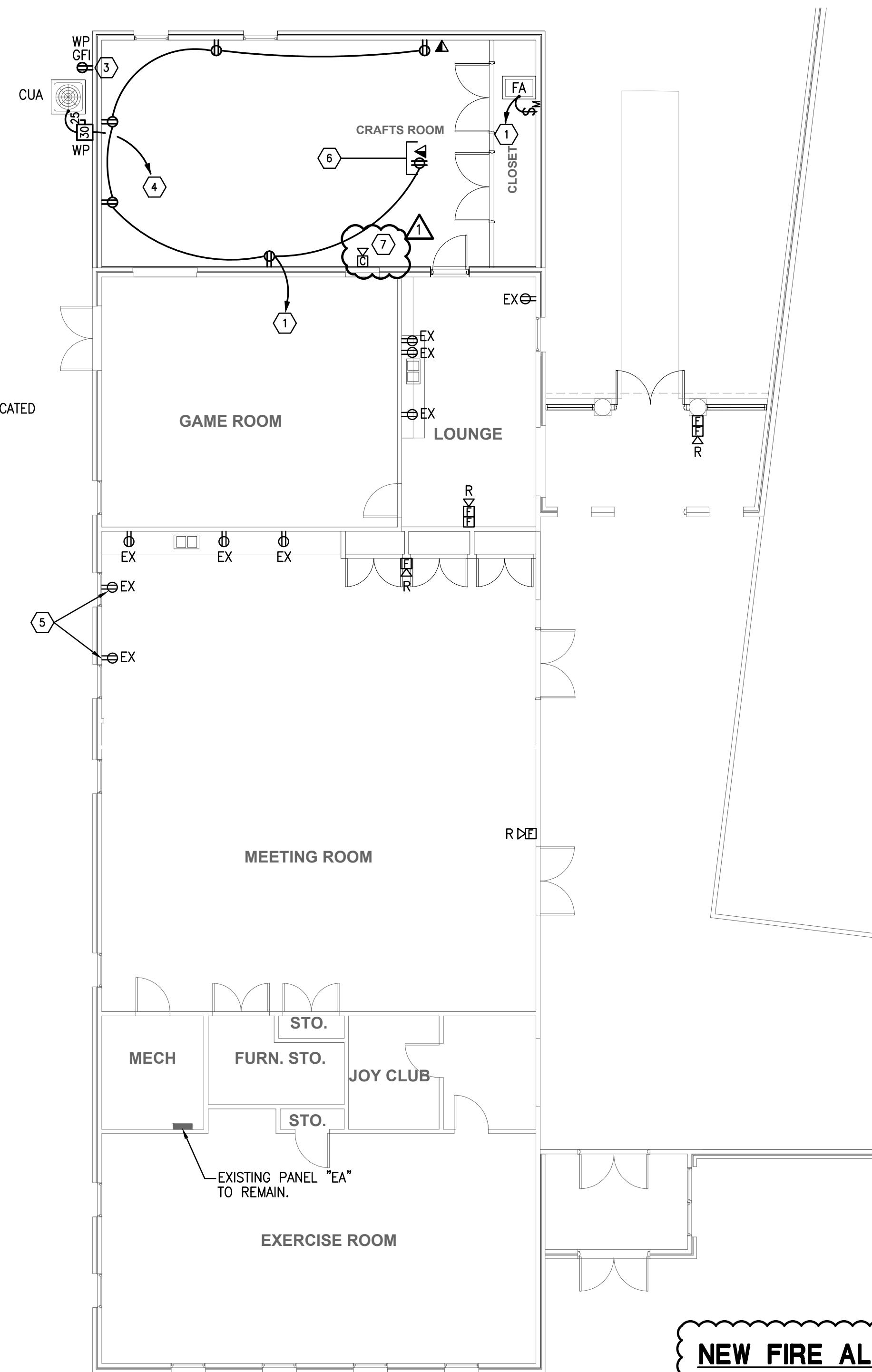


POWER DEMOLITION PLAN
SCALE: 1/8" = 1'-0"



POWER AND SIGNAL NEW WORK PLAN
SCALE: 1/8" = 1'-0"

LEGEND:

- EX - INDICATES EXISTING OUTLET/DEVICE TO REMAIN
- ER - INDICATES EXISTING OUTLET/DEVICE TO BE RELOCATED
- R - INDICATES RELOCATED OUTLET/DEVICE
- DE - INDICATES OUTLET/DEVICE TO BE DEMOED

KEYED NOTES:

- 1) CONNECT TO EXISTING PANEL "EA", 20A/1P CIRCUIT BREAKER MADE SPARE BY DEMO WORK.
- 2) ABANDON IN PLACE EXISTING FLOOR OUTLET - VERIFY WITH OWNER.
- 3) CONNECT TO AN EXISTING EXTERIOR RECEPTACLE CIRCUIT.
- 4) EXTEND 2#10, 1#10G, 3/4" C. TO EXISTING PANEL "EA", PROVIDE 25A/2P CIRCUIT BREAKER.
- 5) RECONNECT EXISTING RECEPTACLES TO RECEPTACLE CIRCUIT IN THE AREA.
- 6) MOUNT RECEPTACLE AND TEL/DATA OUTLETS FLUSH IN THE CEILING - COORDINATE FINAL LOCATION WITH OWNER BEFORE ROUGH-IN.
- 7) BUILDING FIRE ALARM VENDOR SHALL CONNECT TO NEAREST EXISTING FIRE ALARM CIRCUIT. REFER TO NEW FIRE ALARM LEGEND, THIS SHEET.

NEW FIRE ALARM LEGEND

- ☐ FIRE ALARM CHIME/STROBE MOUNTED AT 80" AFF.



THIS DRAWING IS THE PROPERTY OF THE ARCHITECT AND MAY BE USED WITHOUT HIS WRITTEN PERMISSION.
© COPYRIGHT HARRIS, FRITZ & ASSOCIATES, INC. ARCHITECTS.

FAYETTE SENIOR CENTER ADDITION
4 CENTER DRIVE
FAYETTEVILLE, GA 30214

Harris·Fritz
architects
141 South Avenue
Marietta, Georgia 30060
770-488-8060 Fax: 770-488-9849

REVISIONS:

▲	CHIME IN CRAFTS ROOM
	01/09/15

10-27-14
DATE:
2014-009
PROJECT NUMBER

SHEET NO:
E-3
OF: 3

MARSHALL & BOLLWERK ENGINEERING, INC.
850 North Point Pkwy, Suite 375
Alpharetta, Ga. 30006
p: (678) 795-0333, f: (678) 795-0063
e: mbe@mbeinc.net