

PLUMBING SPECIFICATIONS

SCOPE:

THE WORK UNDER THIS SECTION SHALL BE TO PROVIDE A COMPLETE PLUMBING SYSTEM. ALL ITEMS OF WORK, OF COST AND EXPENSE OF ANY NATURE WHATSOEVER BELONGING WITH OR NECESSARY TO THE COMPLETION OF WORK CALLED FOR IN THIS SPECIFICATION OR IN THE CONTRACT DOCUMENTS ARE HEREBY SPECIFIED TO BE INCLUDED IN THIS CONTRACT.

ALL WORK SHALL COMPLY WITH THE REQUIREMENTS OF THE INTERNATIONAL PLUMBING CODE, AS WELL AS ANY LOCAL CODES AND ORDINANCES.

WARRANTY:

EQUIPMENT FURNISHED SHALL BE GUARANTEED FOR A MINIMUM PERIOD OF ONE (1) YEAR FROM DATE OF ACCEPTANCE.

SUBMITTALS:

ALL MATERIALS AND EQUIPMENT WHICH THE CONTRACTOR PROPOSES TO FURNISH SHALL BE SUBMITTED FOR REVIEW. DATA SHALL BE COMPLETE IN ALL RESPECTS AND SHALL REFERENCE, WHERE APPLICABLE, TO THE UNIT SYMBOL UTILIZED ON THE DRAWINGS AND SPECIFICATIONS.

PIPING:

ALL SANITARY WASTE AND VENT PIPING SHALL BE SCHEDULE 40 DWV PVC WITH DRAINAGE TYPE FITTINGS.

DOMESTIC WATER PIPING INSTALLED ABOVE GRADE SHALL BE TYPE L COPPER TUBING WITH WROUGHT COPPER SWEAT FITTINGS AND LEAD-FREE SOLDER JOINTS. PIPING INSTALLED BELOW GRADE SHALL BE TYPE K COPPER, INSTALLED WITHOUT ANY JOINTS BELOW THE FLOOR SLAB.

VALVES:

VALVES FOR DOMESTIC WATER SYSTEM: GATE VALVES SHALL HAVE BRONZE BODY, RISING STEM, SOLID WEDGE, THREADED BONNET, AND SOLDER ENDS FOR 125# SWP. WHERE GATE 2" AND SMALLER ARE SPECIFIED, QUARTER-TURN FULL PORT BALL VALVES MAY BE SUBSTITUTED.

CLEANOUTS:

PROVIDE CLEANOUTS IN SOIL AND WASTE LINES AS SHOWN, AS REQUIRED BY THE GOVERNING CODE, AT THE BOTTOM OF EACH EXPOSED FIXTURE TRAP WHICH IS NOT INTEGRAL WITH THE FIXTURE, AT THE END OF EACH BRANCH DRAINAGE LINE, AT EACH CHANGE OF HORIZONTAL DIRECTION GREATER THAN 45 DEGREES, AT THE FOOT OF EACH SOIL AND RAINWATER STACK, AND IN HORIZONTAL DRAIN LINES AT INTERVALS OF NOT MORE THAN 75'.

FLOOR DRAINS:

FLOOR DRAINS, INCLUDING SHOWER DRAINS, SHALL BE EQUAL TO JOSAM MODEL 30000-A. EACH FLOOR DRAIN, EXCEPT SHOWER DRAINS, SHALL HAVE A TRAP PRIMER.

TRAPS:

PROVIDE TRAPS FOR ALL FIXTURES AND FLOOR DRAINS, EXCEPT AS NOTED OTHERWISE. SET TRAPS TRUE AND LEVEL. PROVIDE EXPOSED TRAPS WITH BRASS CLEANING SCREWS.

INSULATION:

PIPE INSULATION SHALL BE ONE-PIECE FIBROUS GLASS SECTIONAL PIPE INSULATION WITH FACTORY APPLIED GLASS REINFORCED ALUMINUM FOIL AND WHITE KRAFT PAPER FLAME RETARDANT VAPOR BARRIER JACKET. LONGITUDINAL JACKET LAPS AND BUTT STRIPS SHALL BE SELF-SEALING. INSULATE ALL NEW DOMESTIC WATER PIPING WITH MINIMUM 1" THICK INSULATION.

PLUMBING FIXTURES:

ALL FIXTURES SHALL BE COMMERCIAL GRADE VITREOUS CHINA, ENAMELED CAST IRON, OR STAINLESS STEEL, AS INDICATED. FOR EACH FIXTURE, PROVIDE CHROME PLATED BRASS STOP VALVES ON BOTH COLD AND HOT WATER SUPPLIES, WITH STAINLESS STEEL BRAIDED RUBBER SUPPLY HOSES FROM THE STOP VALVES TO THE FIXTURES. EACH SINK AND LAVATORY SHALL ALSO BE PROVIDED WITH A 17 GAUGE, CHROME-PLATED BRASS P-TRAP, WITH CLEANOUT PLUG. ALL FAUCETS AND SHOWER VALVES SHALL BE CHROME PLATED BRASS CONSTRUCTION. (REFER TO ARCHITECTURAL DRAWINGS FOR SPECIFIC MODEL NUMBERS FOR SOME FIXTURES.)

FIXTURES SHALL BE AS FOLLOWS:

F1 - WATER CLOSET (ACCESSIBLE): FLOOR MOUNTED, ELONGATED WHITE VITREOUS CHINA, 16.5" HIGH RIM, 1.28 GPF MANUAL FLUSH VALVE, OPEN FRONT SEAT, ADA COMPLIANT. AMERICAN STANDARD, KOHLER, ELJER OR CRANE.

F2 - WATER CLOSET: FLOOR MOUNTED, ELONGATED WHITE VITREOUS CHINA, 15" HIGH RIM, 1.28 GPF MANUAL FLUSH VALVE, OPEN FRONT SEAT, ADA COMPLIANT. AMERICAN STANDARD, KOHLER, ELJER OR CRANE.

F3 - LAVATORY (ACCESSIBLE): WHITE VITREOUS CHINA, OVAL SELF-RIMMING, COUNTERTOP TYPE, AMERICAN STANDARD, KOHLER, ELJER OR CRANE, ADA COMPLIANT. FAUCET SHALL BE CHROME PLATED BRASS, SINGLE LEVER TYPE, WITH STANDARD SPOUT, 0.5 GPM AERATOR AND GRID DRAIN, AMERICAN STANDARD, CHICAGO, KOHLER OR MOEN. ADA COMPLIANT.

F4 - SINGLE COMPARTMENT LAUNDRY SINK: MINIMUM 18 GAUGE STAINLESS STEEL, SELF-RIMMING COUNTERTOP SINK WITH SINGLE 21"x16"x10" DEEP BOWL, CHROME PLATED BRASS DRAIN WITH REMOVABLE CRUMB CUP, CHROME-PLATED BRASS P-TRAP WITH CLEANOUT PLUG, CHROME PLATED BRASS SUPPLY STOPS AND STAINLESS STEEL BRAIDED RUBBER SUPPLY HOSES. FAUCET SHALL BE CHROME PLATED BRASS CONSTRUCTION, SINGLE LEVER TYPE, WITH SWIVEL SPOUT AND PULL-OUT HOSE SPRAY.

F5 - TWO COMPARTMENT KITCHEN SINK: MINIMUM 18 GAUGE STAINLESS STEEL, SELF-RIMMING COUNTERTOP SINK WITH TWO 13.5"x16"x8" DEEP BOWLS, CHROME PLATED BRASS DRAINS WITH REMOVABLE CRUMB CUPS, CHROME-PLATED BRASS P-TRAP WITH CLEANOUT PLUG, CHROME PLATED BRASS SUPPLY STOPS AND STAINLESS STEEL BRAIDED RUBBER SUPPLY HOSES. FAUCET SHALL BE CHROME PLATED BRASS CONSTRUCTION, SINGLE LEVER TYPE, WITH SWIVEL SPOUT AND PULL-OUT HOSE SPRAY.

F6 - TWO COMPARTMENT LAUNDRY SINK: MINIMUM 14 GAUGE STAINLESS STEEL, FLOOR MOUNTED ON ADJUSTABLE LEGS, WITH TWO 18"x24"x14" DEEP BOWLS, LEFT AND RIGHT DRAINBOARDS, CHROME PLATED BRASS DRAINS WITH REMOVABLE CRUMB CUPS, CHROME-PLATED BRASS P-TRAP WITH CLEANOUT PLUG, CHROME PLATED BRASS SUPPLY STOPS AND STAINLESS STEEL BRAIDED RUBBER SUPPLY HOSES. FAUCET SHALL BE CHROME PLATED BRASS CONSTRUCTION, SINGLE LEVER TYPE, WITH SWIVEL SPOUT. FIXTURE SHALL BE ADVANCE TABCO 94-62-36-36RL, OR EQUAL.

F7 - MOP RECEPTOR: NOMINAL 36"x36"x12" DEEP MOLDED STONE BASIN WITH STAINLESS STEEL RIM GUARD AND CHROME PLATED BRASS GRID DRAIN. FAUCET SHALL BE WALL MOUNTED AT 36" AFF. FAUCET SHALL BE CHROME PLATED BRASS WITH INTEGRAL SUPPLY STOPS, VACUUM BREAKER, BLADE HANDLES, HOSE THREADS, BUCKET HOOK AND TOP ANGLE WALL BRACE

F8 - SHOWER (ACCESSIBLE): (SHOWER STALL IS CERAMIC TILE.) PROVIDE PRESSURE BALANCED SHOWER VALVE, ADJUSTABLE, WALL MOUNTED SHOWER HEAD, HAND-HELD SHOWER HEAD ON 2' SLIDE BAR WITH SHOWER HEAD SELECTOR VALVE, AND SHOWER DRAIN EQUAL TO FLOOR DRAINS SPECIFIED ABOVE. ADA COMPLIANT. AMERICAN STANDARD, CHICAGO, KOHLER OR MOEN.

F9 - SHOWER: (SHOWER STALL IS CERAMIC TILE.) PROVIDE PRESSURE BALANCED SHOWER VALVE, ADJUSTABLE, WALL MOUNTED SHOWER HEAD, AND SHOWER DRAIN EQUAL TO FLOOR DRAINS SPECIFIED ABOVE. AMERICAN STANDARD, CHICAGO, KOHLER OR MOEN.

F10 - DRINKING FOUNTAIN (ACCESSIBLE): WALL MOUNTED, BI-LEVEL REFRIGERATED DRINKING FOUNTAIN WITH FRONT AND SIDE TOUCH PADS, 8 GPH COOLING CAPACITY, ADA COMPLIANT. ELKAY, EBCO OR HALSEY TAYLOR.

F11 - WASHER BOX: RECESSED, GALVANIZED STEEL HOUSING WITH METAL TRIM RING, 2" WASTE OUTLET AND QUARTER TURN BALL TYPE HOT AND COLD WATER STOP VALVES WITH HOSE THREADS. GUY GRAY MODEL BB200TS, OR EQUAL.

WATER HEATER:

WATER HEATER SHALL BE HIGH EFFICIENCY, GAS FIRED, STORAGE TYPE, ENERGY EFFICIENT, COMPLYING WITH ASHRAE STANDARD 90.1, WITH MANUAL DRAIN VALVE AND ASME P&T RELIEF VALVE. HEATER SHALL BE PIPED AS SHOWN IN DETAILS 1/P101 AND 2/P101. CAPACITIES SHALL BE AS SCHEDULED ON THE DRAWINGS. HEATER SHALL BE A.O. SMITH, AS SCHEDULED, OR EQUAL STATE, OR RHEEM.

SERVICE AIR COMPRESSOR:

AIR COMPRESSOR SHALL BE VERTICAL TANK MOUNTED, WITH TWO-STAGE COMPRESSOR, 80 GALLON RECEIVER, 7.5 HP MOTOR. CAPACITY SHALL BE 25.1 CFM AT 175 PSIG MAXIMUM PRESSURE. COMPRESSOR SHALL BE SCHULZ MODEL 7580VV30X-1, OR APPROVED EQUAL.

PLUMBING FIXTURE SCHEDULE

MARK	FIXTURE	NOTES	RIM HEIGHT	COLD WATER		HOT WATER		SOIL/WASTE	
				BRANCH	CONN.	BRANCH	CONN.	BRANCH	CONN.
F1	WATER CLOSET (ACCESSIBLE)	1, 2, 5	16.5"	1"	1"	-	-	4"	4"
F2	WATER CLOSET	2, 5	15"	1"	1"	-	-	4"	4"
F3	LAVATORY (ACCESSIBLE)	1, 3, 7, 9	34"	1/2"	1/2"	1/2"	1/2"	2"	1-1/4"
F4	SINGLE COMPARTMENT LAUNDRY SINK	4, 7	34"	1/2"	1/2"	1/2"	1/2"	2"	1-1/2"
F5	TWO COMPARTMENT SINK (ACCESSIBLE)	1, 4, 7	34"	1/2"	1/2"	1/2"	1/2"	2"	1-1/2"
F6	TWO COMPARTMENT LAUNDRY SINK	4, 7	34"	1/2"	1/2"	1/2"	1/2"	2"	1-1/2"
F7	MOP RECEPTOR	5, 8	12"	1/2"	1/2"	1/2"	1/2"	3"	3"
F8	SHOWER (ACCESSIBLE)	1, 10, 11, 12, 13	-	1/2"	1/2"	1/2"	1/2"	3"	2"
F9	SHOWER	10, 11	-	1/2"	1/2"	1/2"	1/2"	3"	2"
F10	BI-LEVEL DRINKING FOUNTAIN (ACCESSIBLE)	1, 6	32"/38"	1/2"	3/8"	-	-	2"	1-1/4"
F11	WASHER BOX	6	36"	1/2"	1/2"	1/2"	1/2"	2"	2"

①	HANDICAP ACCESSIBLE FIXTURE	⑤	FLOOR MOUNTED FIXTURE	⑨	0.5 GPM TAMPER-PROOF AERATOR	⑬	SHOWER HEAD DIVERTER VALVE
②	1.28 GPF LEVER OPERATED FLUSH VALVE	⑥	WALL HUNG FIXTURE	⑩	PRESSURE BALANCED SHOWER VALVE	⑭	
③	SINGLE LEVER FAUCET WITH STANDARD SPOUT	⑦	COUNTERTOP FIXTURE	⑪	ADJUSTABLE WALL MOUNT SHOWER HEAD	⑮	
④	SINGLE LEVER FAUCET WITH SWIVEL SPOUT	⑧	WALL MOUNTED FAUCET	⑫	ADJUSTABLE HAND-HELD SHOWER HEAD	⑯	

WATER HEATER SCHEDULE

SYMBOL	HEATER SERVICE	HEATER TYPE	HEAT INPUT	STORAGE CAPACITY	RECOVERY RATE (GPH)	DISCHARGE TEMP (°F)	MANUFACTURER & MODEL	REMARKS
WH-1	DOMESTIC HOT WATER	GAS STORAGE	120 MBH	60 GAL	197 @ 70' RISE	110	A. O. SMITH BTH-120	
WH-2	DOMESTIC HOT WATER	GAS STORAGE	300 MBH	130 GAL	349 @ 100' RISE	140	A. O. SMITH BTH-300	

PUMPS

SERVICE	TYPE	GPM	HEAD FT. H ₂ O	RPM	MAX. H.P.	ELECTRICAL VOLTS/PH	MODEL	REMARKS
HOT WATER RECIRC	IN-LINE	5	3	1760	1/8	120/1	GRUNDFOS UP15-10B7	

PLUMBING LEGEND

SYMBOL	ABBREVIATION	DESCRIPTION
---	S,W	SOIL OR WASTE PIPE
----	V	VENT PIPE
----	CW	COLD WATER PIPE
----	HW	HOT WATER PIPE
----	HWC	HOT WATER CIRC. PIPE
⊕	FS	FLOOR SINK
⊗	FD	FLOOR DRAIN
⊙	FCO	FLOOR CLEANOUT
⊠	COTG	CLEANOUT TO GRADE
⊢	GV	GATE VALVE
⊣	CKV	CHECK VALVE
⊤	STR	STRAINER
⊥	U	UNION
⊕	-	CONNECT TO EXISTING
⊖	AFF	ABOVE FINISHED FLOOR
⊗	A/C	ABOVE CEILING
⊙	(BF)	BARRIER FREE
⊖	B/F	BELOW FLOOR
⊗	B/G	BELOW GRADE
⊙	F	PLUMBING FIXTURE
⊖	VTR	VENT THRU ROOF



75 Jackson St. Suite 401
Newnan, Georgia 30263
Telephone: (770) 683-9170
Fax: (770) 683-9171
E-Mail: info@kaod.com
Web Site: www.kaod.com

PRINTED
DATE: 09.27.2018
COMMENTS: BID SET / PERMIT SET

This drawing is property of K.A. Oldham Design, Inc and may not be reproduced or used without the Architect's written permission. © 2018

FAYETTE CO. FIRE STATION NO. 4

278 MCELROY ROAD
FAYETTEVILLE, GEORGIA

Prepared for
FAYETTE CO. FIRE DEPT

COMMISSION NO:

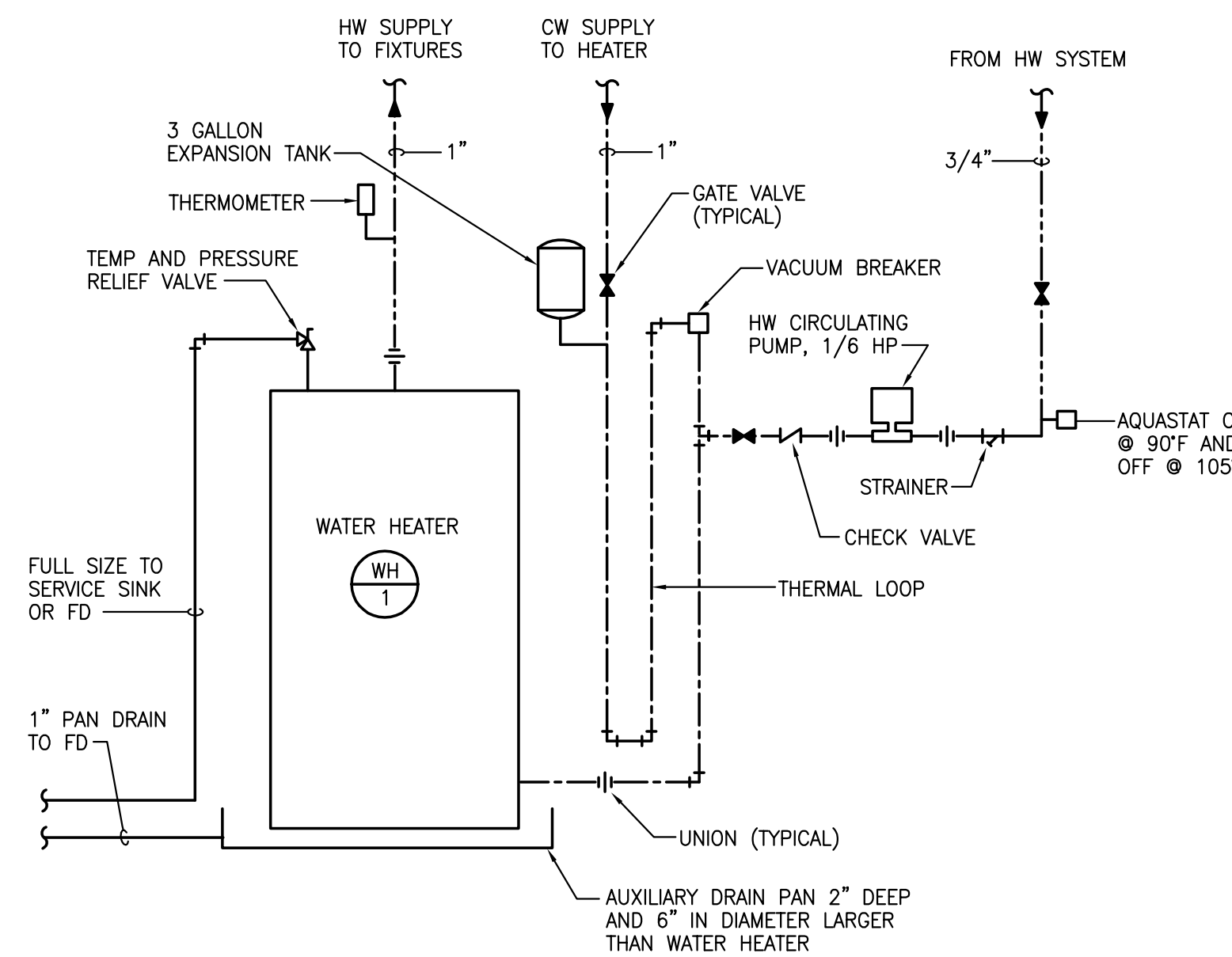
1748.00

SHEET TITLE:
PLUMBING SCHEDULES, DETAILS & SPECIFICATIONS

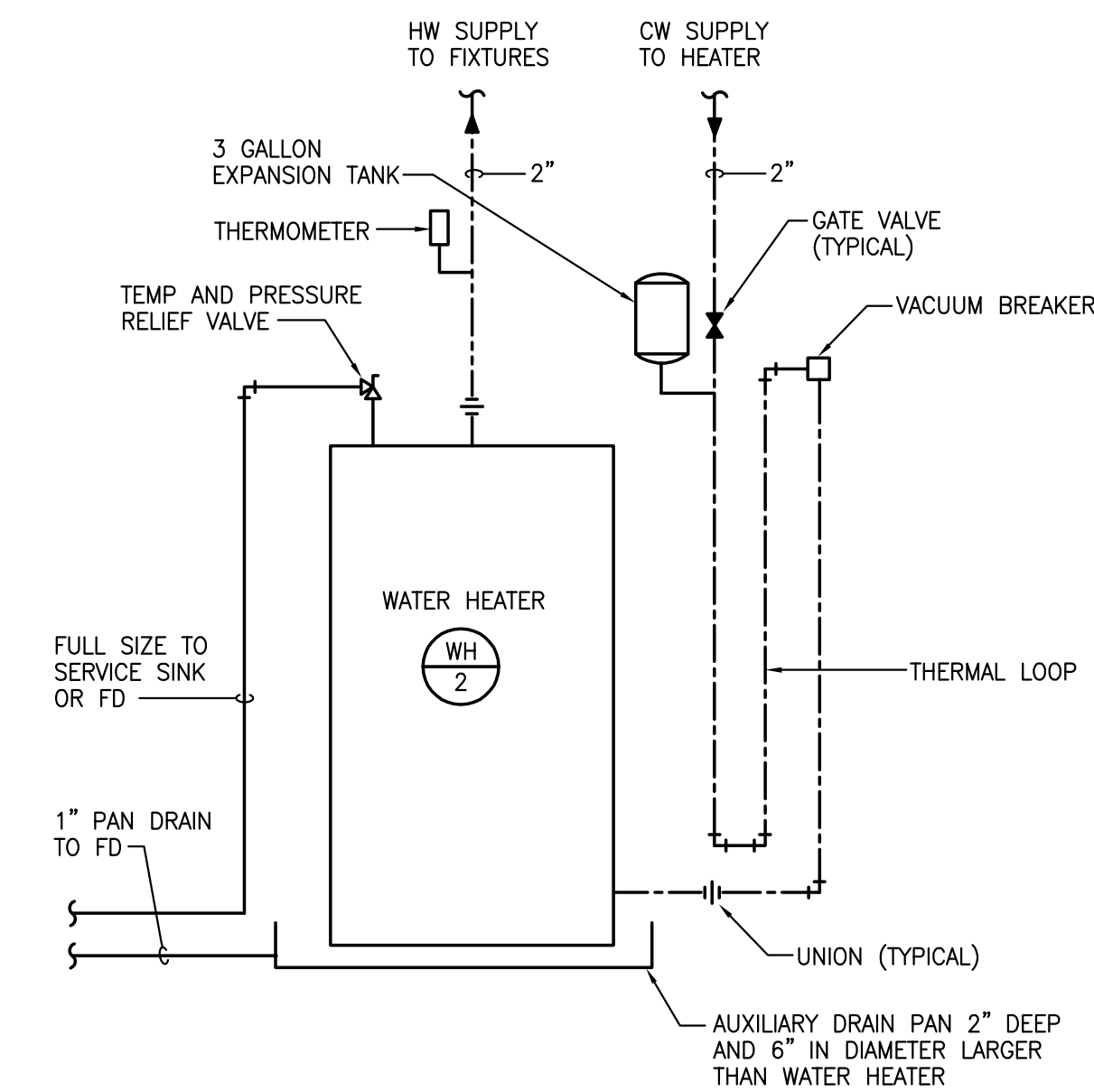
SHEET NO:

P101

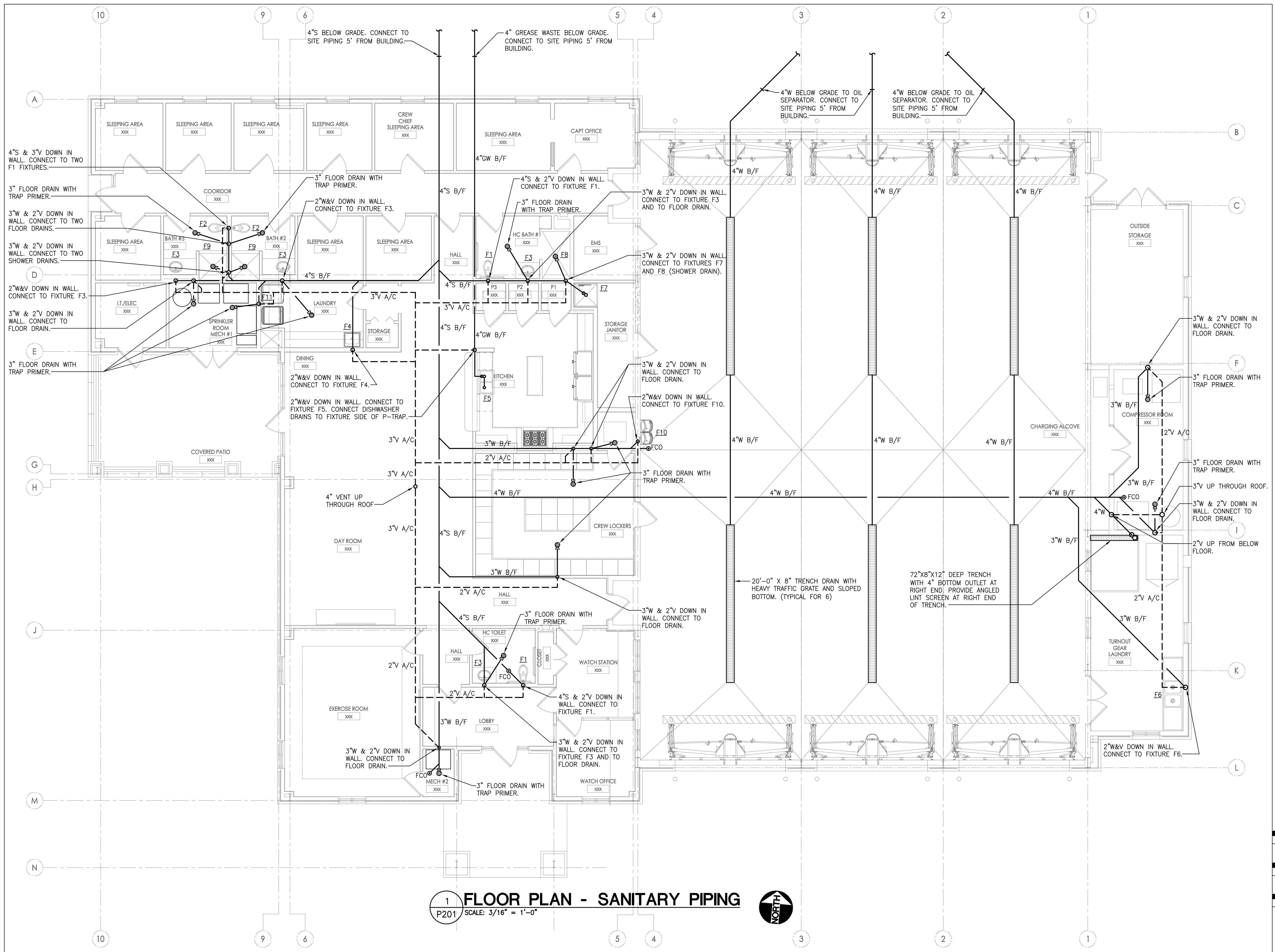
NOT ISSUED FOR CONSTRUCTION



1
P101 NOT TO SCALE
DETAIL - WATER HEATER WH-1



2
P101 NOT TO SCALE
DETAIL - WATER HEATER WH-2



architecture
interiors
town planning

KAOD
K A Oldham Design, Inc

75 Jackson St. Suite 401
Newnan, Georgia 30263
Telephone: (770) 683-9170
Fax: (770) 683-9171
E-Mail: info@kaod.com
Web Site: www.kaod.com

PRINTED	DATE	COMMENTS
	09.27.2018	BID SET / PERMIT SET

This drawing is property of K.A. Oldham Design, Inc and may not be reproduced or used without the Architect's written permission. © 2018

FAYETTE CO.
FIRE STATION
NO. 4

278 MCELROY ROAD
FAYETTEVILLE, GEORGIA

Prepared for
FAYETTE CO.
FIRE DEPT

COMMISSION NO:
1748.00

SHEET TITLE:
FLOOR PLAN - SANITARY PIPING

SHEET NO:

P201

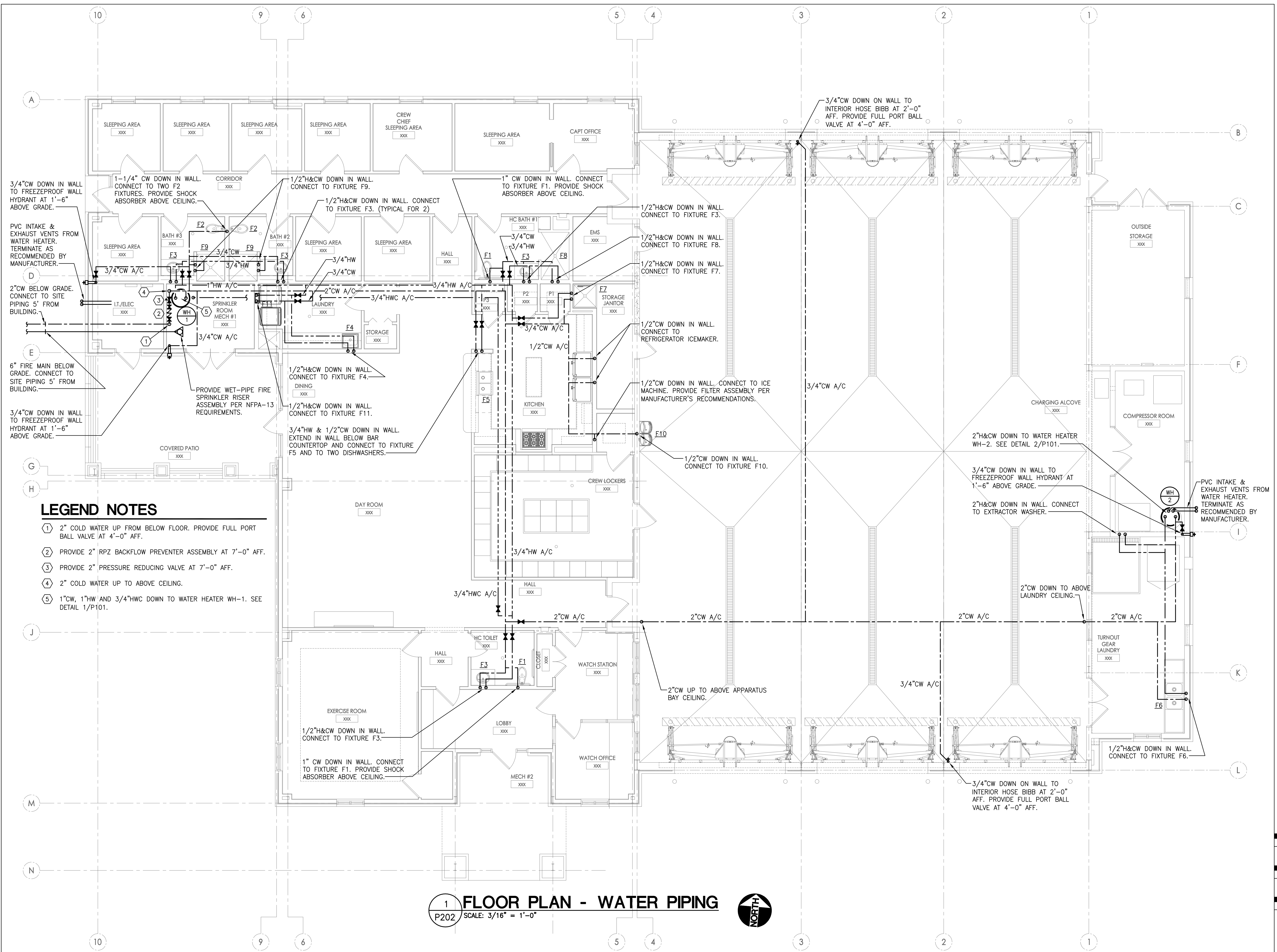
NOT ISSUED FOR CONSTRUCTION

1 FLOOR PLAN - SANITARY PIPING
P201 SCALE: 3/16" = 1'-0"



PRINTED	
DATE	COMMENTS
09.27.2018	BID SET / PERMIT SET

This drawing is property of K.A. Oldham Design, Inc and may not be reproduced or used without the Architect's written permission. © 2018



LEGEND NOTES

- ① 2" COLD WATER UP FROM BELOW FLOOR. PROVIDE FULL PORT BALL VALVE AT 4'-0" AFF.
- ② PROVIDE 2" RPZ BACKFLOW PREVENTER ASSEMBLY AT 7'-0" AFF.
- ③ PROVIDE 2" PRESSURE REDUCING VALVE AT 7'-0" AFF.
- ④ 2" COLD WATER UP TO ABOVE CEILING.
- ⑤ 1"CW, 1"HW AND 3/4"HWC DOWN TO WATER HEATER WH-1. SEE DETAIL 1/P101.

1 FLOOR PLAN - WATER PIPING
P202 SCALE: 3/16" = 1'-0"



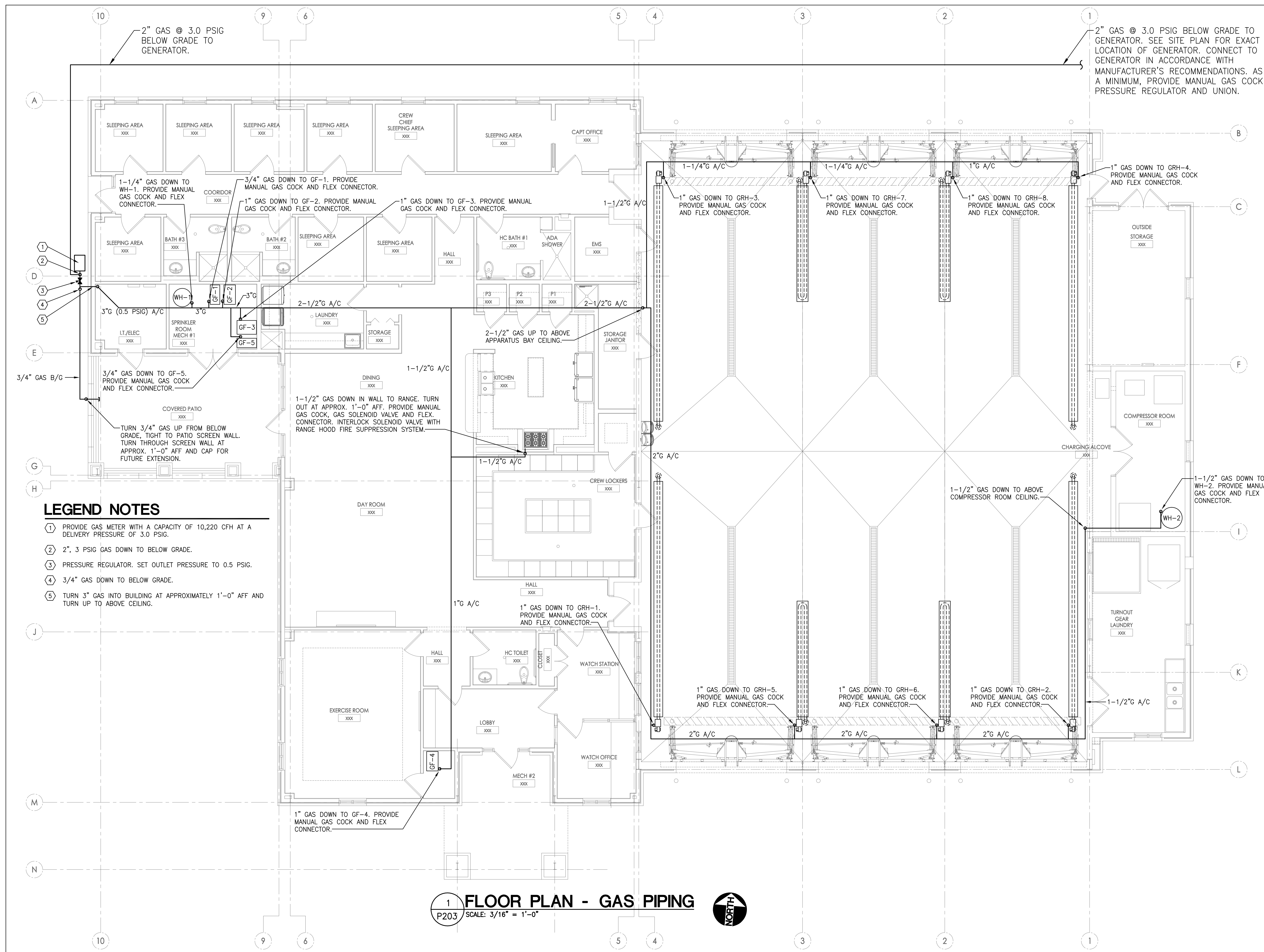
FAYETTE CO. FIRE STATION NO. 4

278 MCELROY ROAD FAYETTEVILLE, GEORGIA

Prepared for
FAYETTE CO. FIRE DEPT

COMMISSION NO:	1748.00
SHEET TITLE:	FLOOR PLAN - WATER PIPING
SHEET NO:	P202

NOT ISSUED FOR CONSTRUCTION



LEGEND NOTES

- ① PROVIDE GAS METER WITH A CAPACITY OF 10,220 CFH AT A DELIVERY PRESSURE OF 3.0 PSIG.
- ② 2", 3 PSIG GAS DOWN TO BELOW GRADE.
- ③ PRESSURE REGULATOR. SET OUTLET PRESSURE TO 0.5 PSIG.
- ④ 3/4" GAS DOWN TO BELOW GRADE.
- ⑤ TURN 3" GAS INTO BUILDING AT APPROXIMATELY 1'-0" AFF AND TURN UP TO ABOVE CEILING.

1 FLOOR PLAN - GAS PIPING
P203 SCALE: 3/16" = 1'-0"



FAYETTE CO. FIRE STATION NO. 4

278 MCELROY ROAD
FAYETTEVILLE, GEORGIA

Prepared for
FAYETTE CO. FIRE DEPT

COMMISSION NO:
1748.00

SHEET TITLE:
FLOOR PLAN - GAS PIPING

SHEET NO:

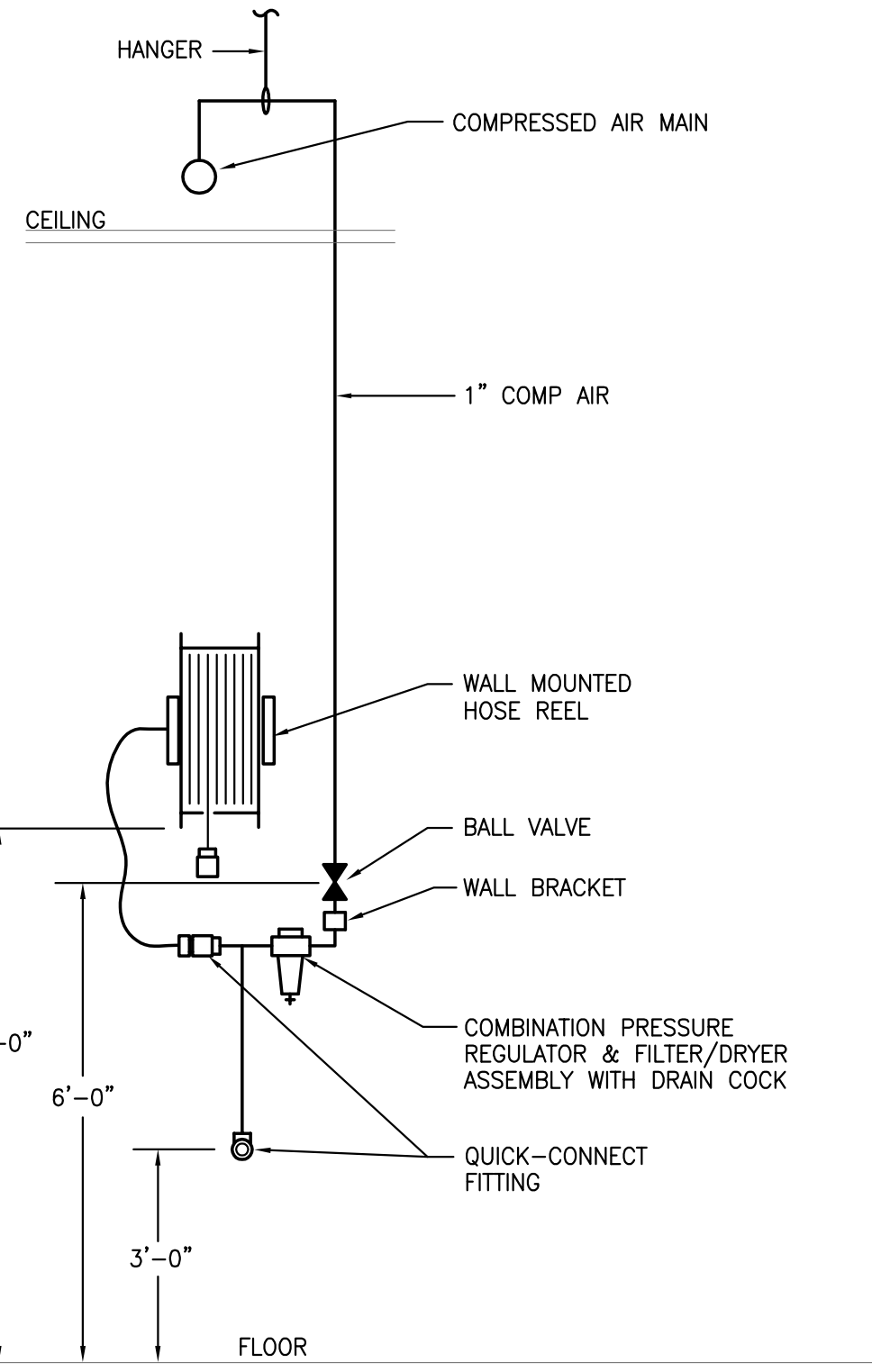
P203

NOT ISSUED FOR CONSTRUCTION

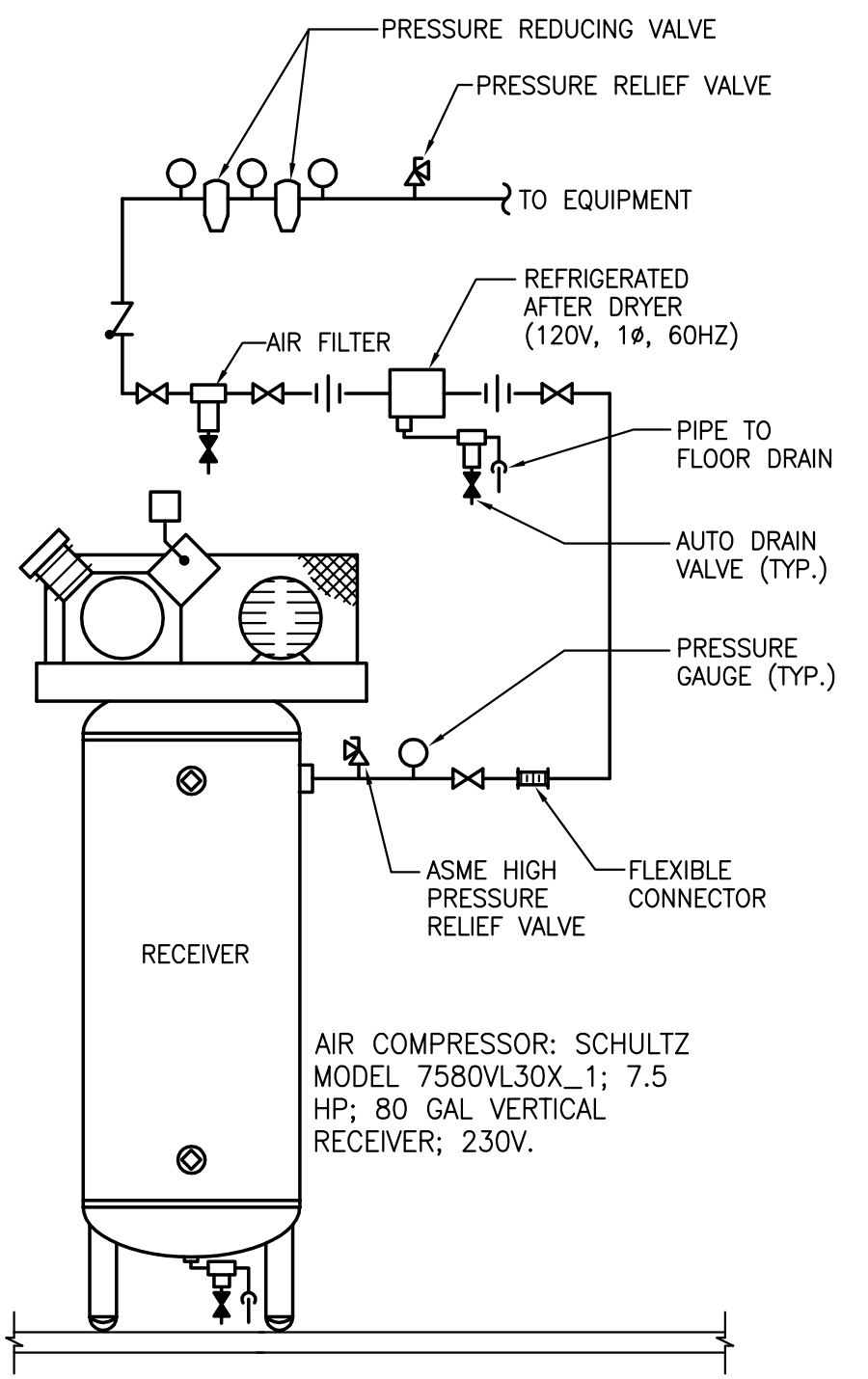
DATE	COMMENTS
09.27.2018	BID SET / PERMIT SET

PRINTED
DATE
COMMENTS
09.27.2018 BID SET / PERMIT SET

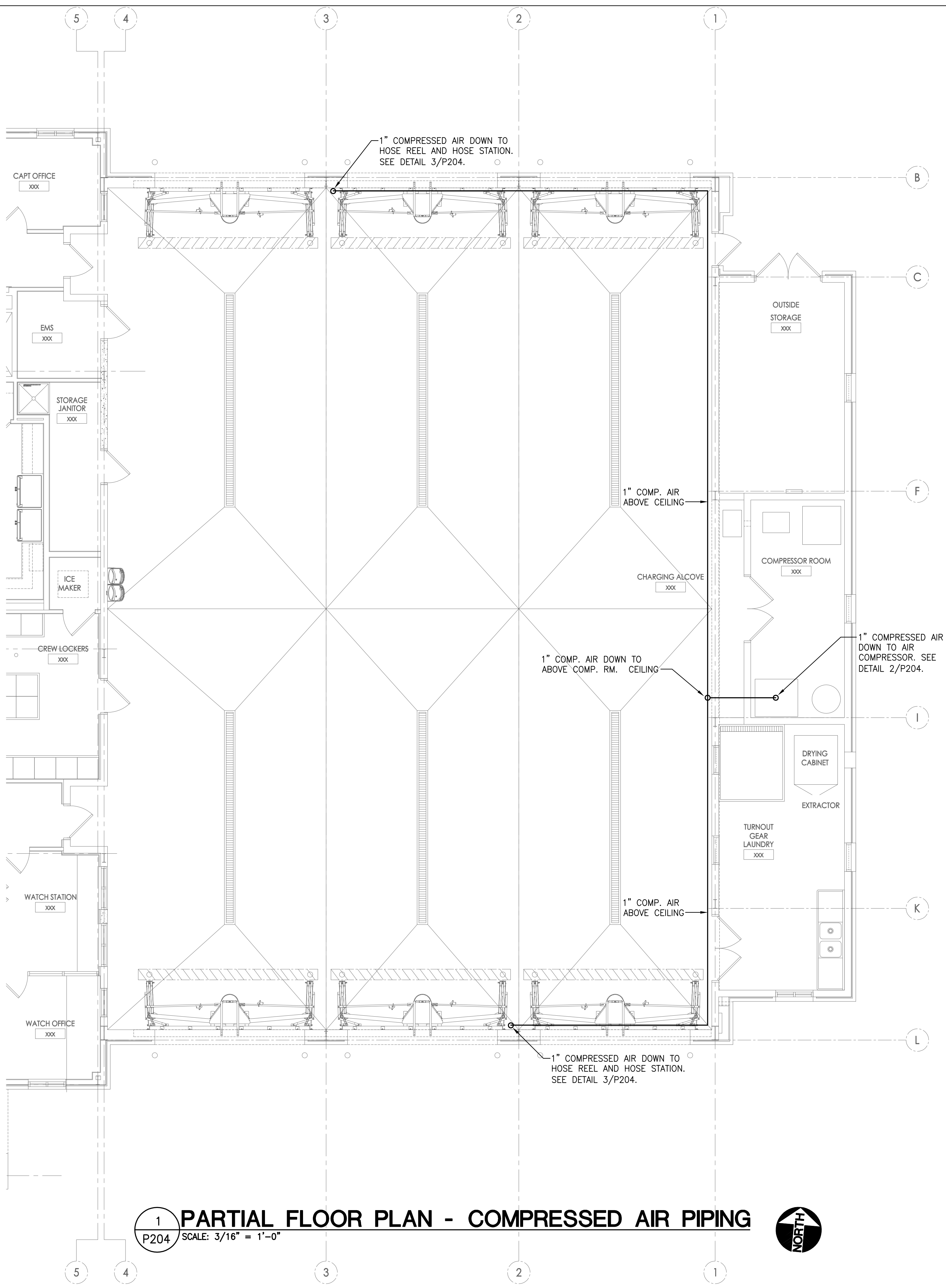
This drawing is property of K.A. Oldham Design, Inc and may not be reproduced or used without the Architect's written permission. © 2018



3 **DETAIL - COMPRESSED AIR DROP**
P204 NOT TO SCALE



2 **DETAIL - AIR COMPRESSOR**
P204 NOT TO SCALE



1 **PARTIAL FLOOR PLAN - COMPRESSED AIR PIPING**
P204 SCALE: 3/16" = 1'-0"



FAYETTE CO.
FIRE STATION
NO. 4

278 MCELROY ROAD
FAYETTEVILLE, GEORGIA

Prepared for
FAYETTE CO.
FIRE DEPT

COMMISSION NO:
1748.00

SHEET TITLE:
FLOOR PLAN -
COMPRESSED AIR PIPING

SHEET NO:

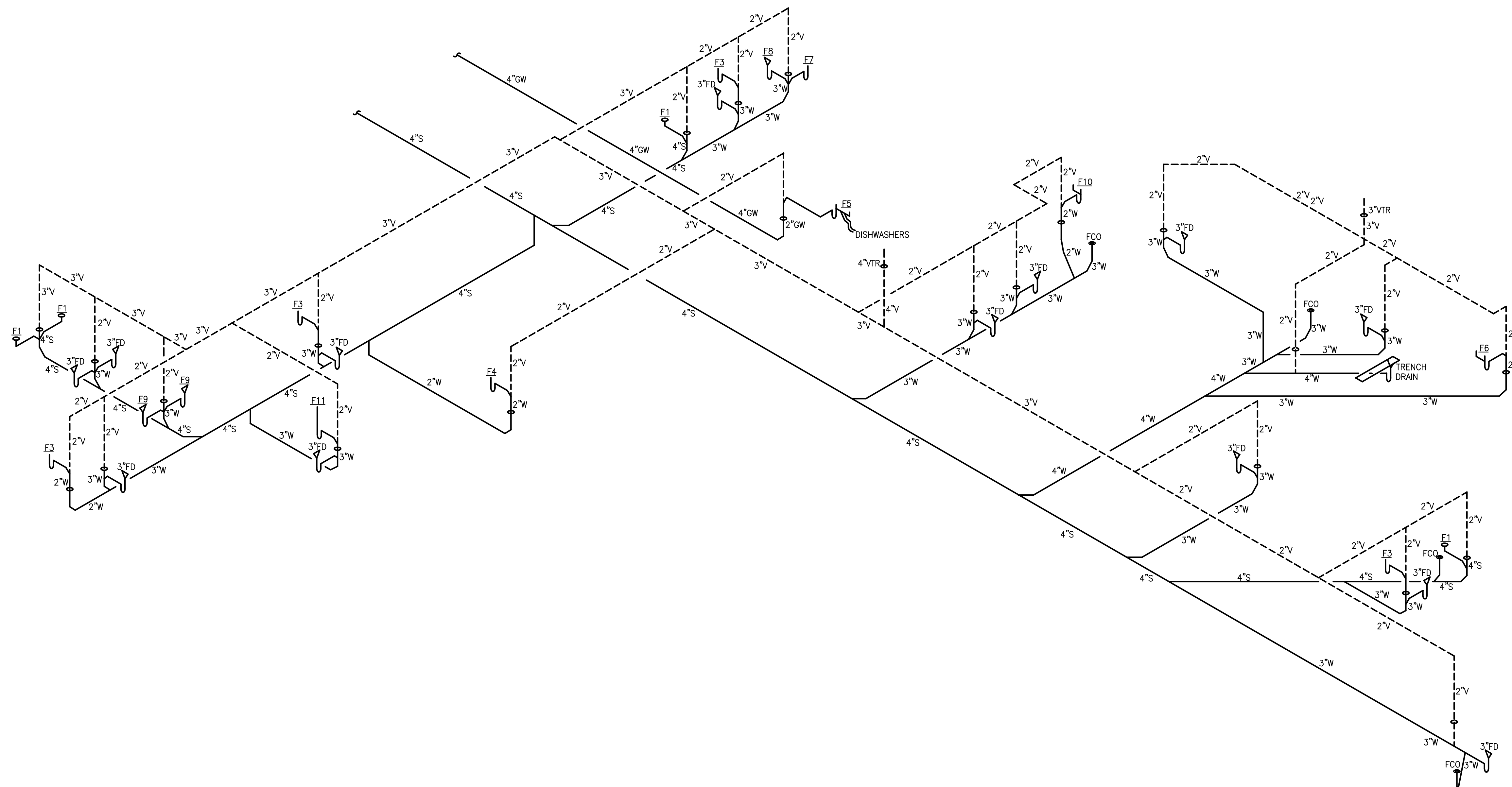
P204

NOT ISSUED FOR CONSTRUCTION

PRINTED

DATE	COMMENTS
09.27.2018	BID SET / PERMIT SET

This drawing is property of K.A. Oldham Design, Inc and may not be reproduced or used without the Architect's written permission. © 2018



1 **SANITARY PIPING RISER DIAGRAM**
P301 NOT TO SCALE

FAYETTE CO.
FIRE STATION
NO. 4

278 MCELROY ROAD
FAYETTEVILLE, GEORGIA

Prepared for
FAYETTE CO.
FIRE DEPT

COMMISSION NO:

1748.00

SHEET TITLE:

**SANITARY PIPING
RISER DIAGRAM**

SHEET NO:

P301

NOT ISSUED FOR CONSTRUCTION