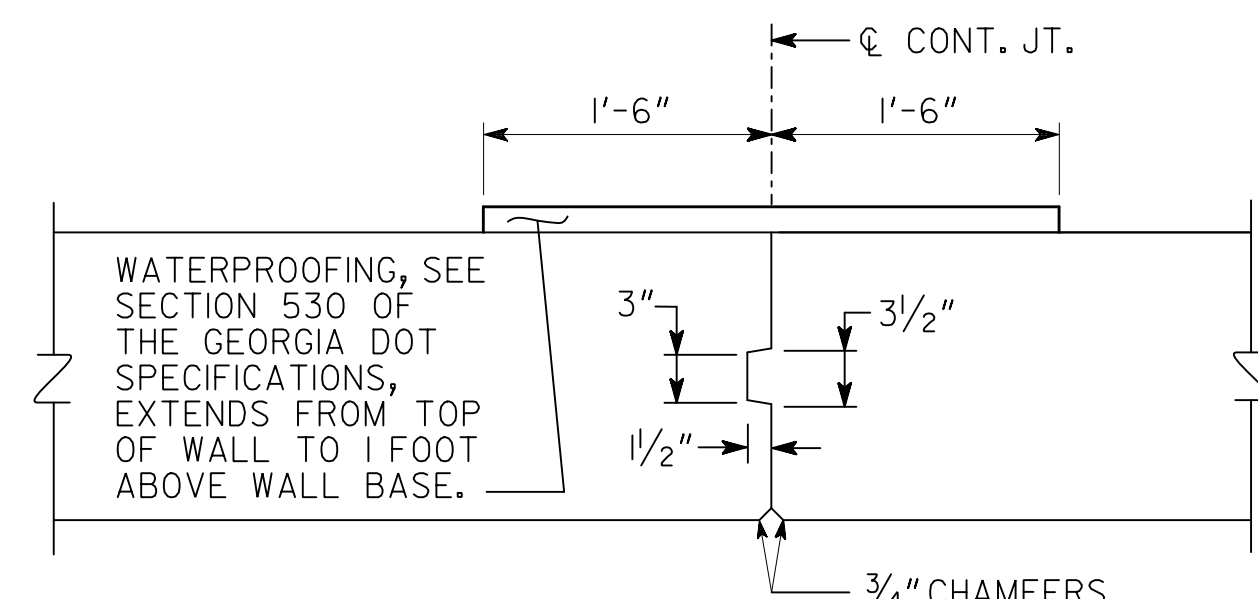
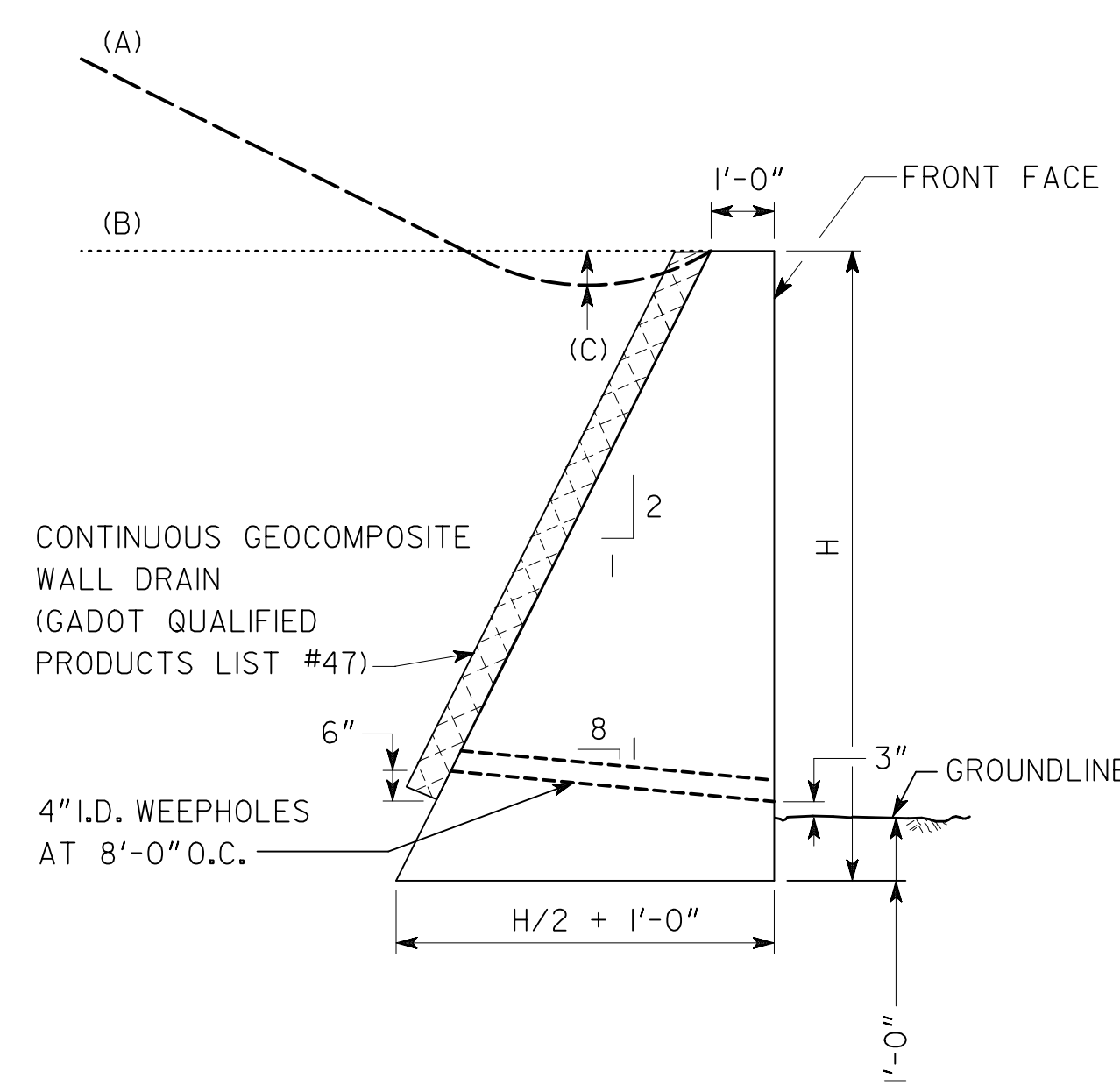


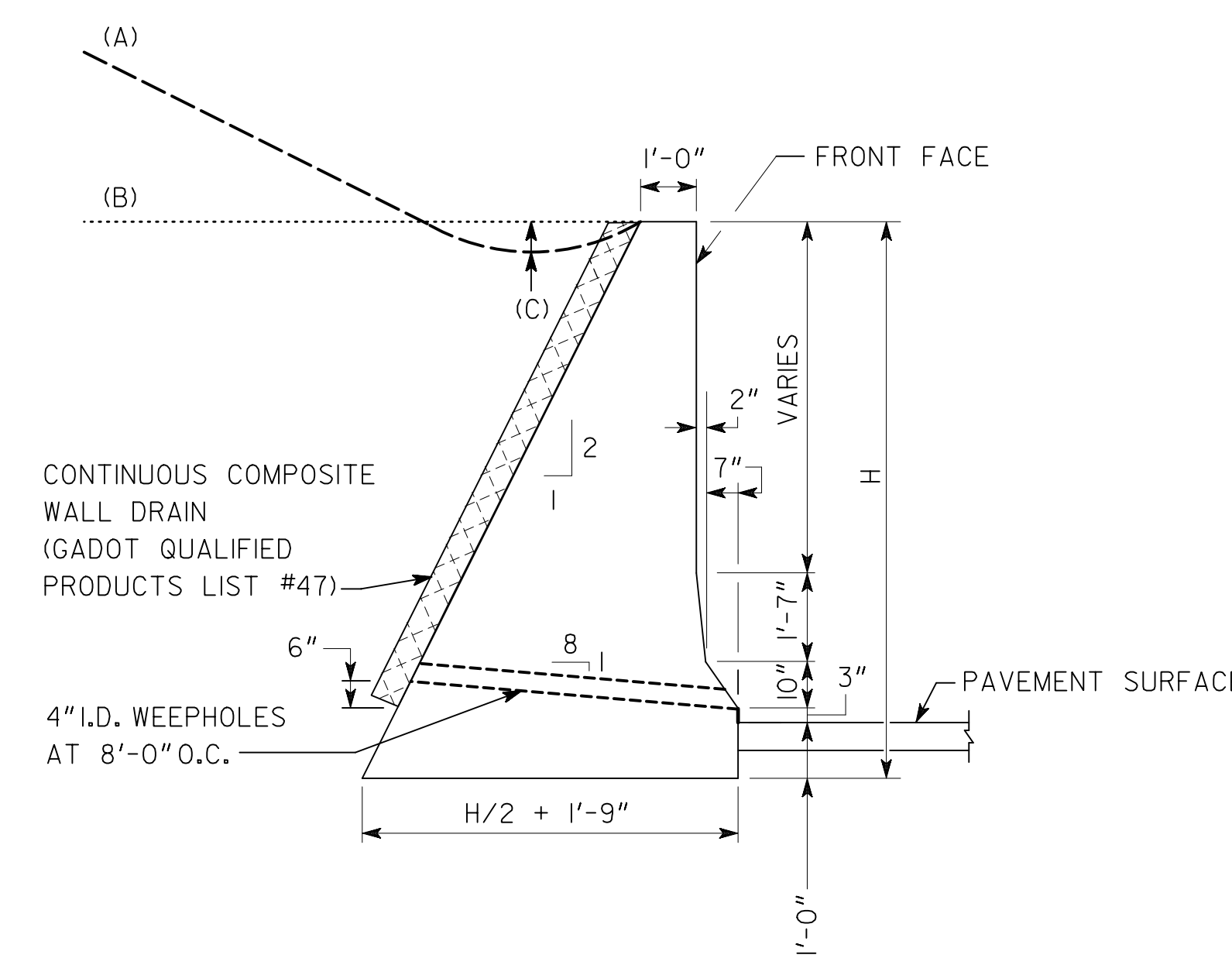
DETAIL OF EXPANSION JOINT  
SEE GENERAL NOTE #3



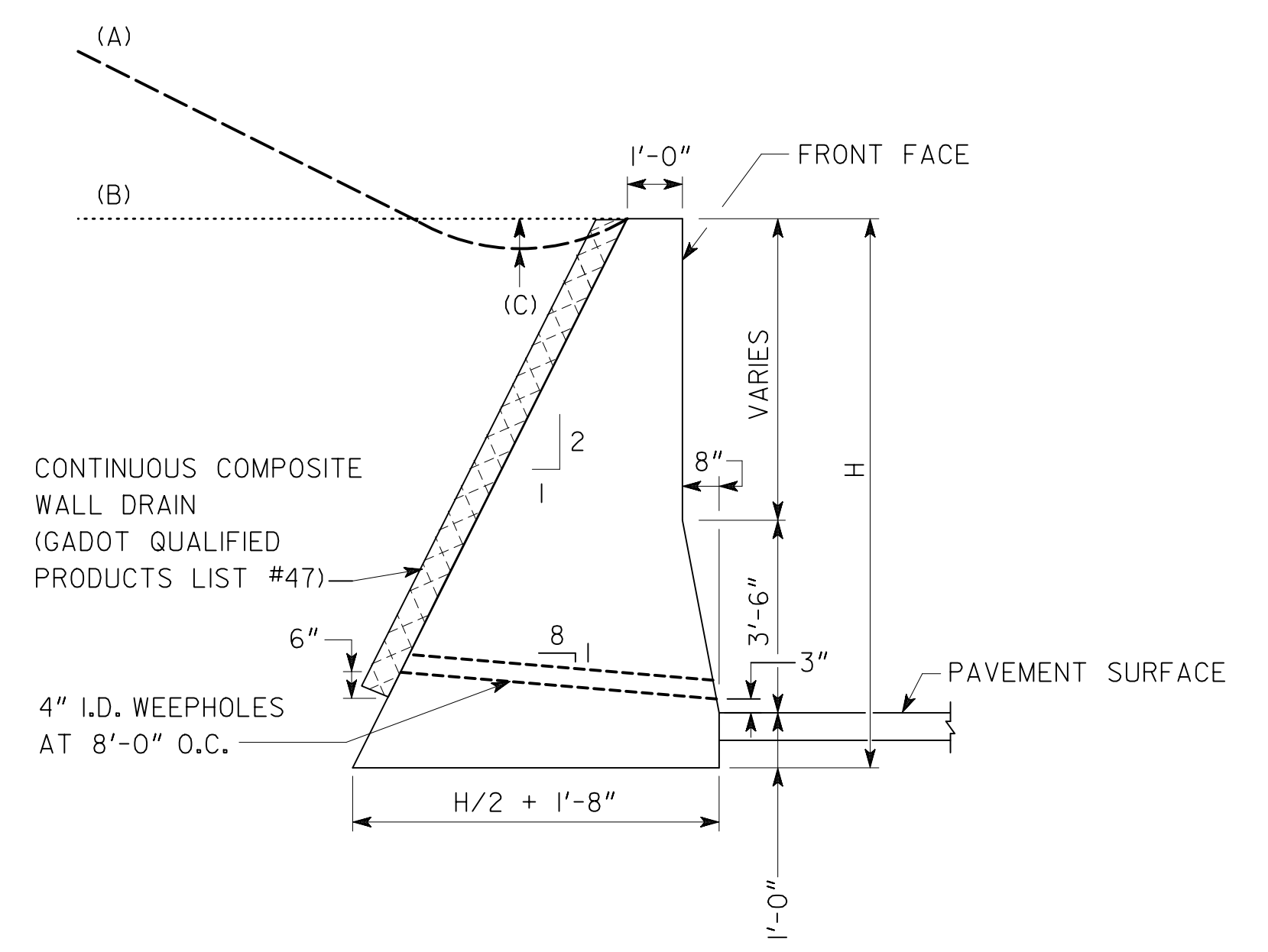
DETAIL OF CONTRACTION JOINT  
SEE GENERAL NOTE #3



TYPICAL SECTION A



TYPICAL SECTION B  
(NEW JERSEY BARRIER FACE)



TYPICAL SECTION C  
(SINGLE SLOPE BARRIER FACE)

(A) - SLOPED BACKFILL WITH DITCH  
(B) - FLAT BACKFILL  
(C) - DITCH DEPTH, 6" - 12" TYPICAL  
SEE PLANS FOR DESIGN

BACKSLOPE	MAXIMUM "H"*		
	TYP. SECTION A	TYP. SECTION B **	TYP. SECTION C **
FLAT	8'-6"	10'-0"	10'-0"
SLOPE TO 4:1	6'-3"	7'-0"	7'-0"
SLOPE TO 2:1	4'-6"	4'-9"	4'-9"

\* GREATER "H" PERMITTED IF APPROVED BY BRIDGE DESIGN.  
\*\* TYPICAL SECTION B SHALL HAVE A MINIMUM H OF 3'-8"  
TYPICAL SECTION C SHALL HAVE A MINIMUM H OF 4'-6"

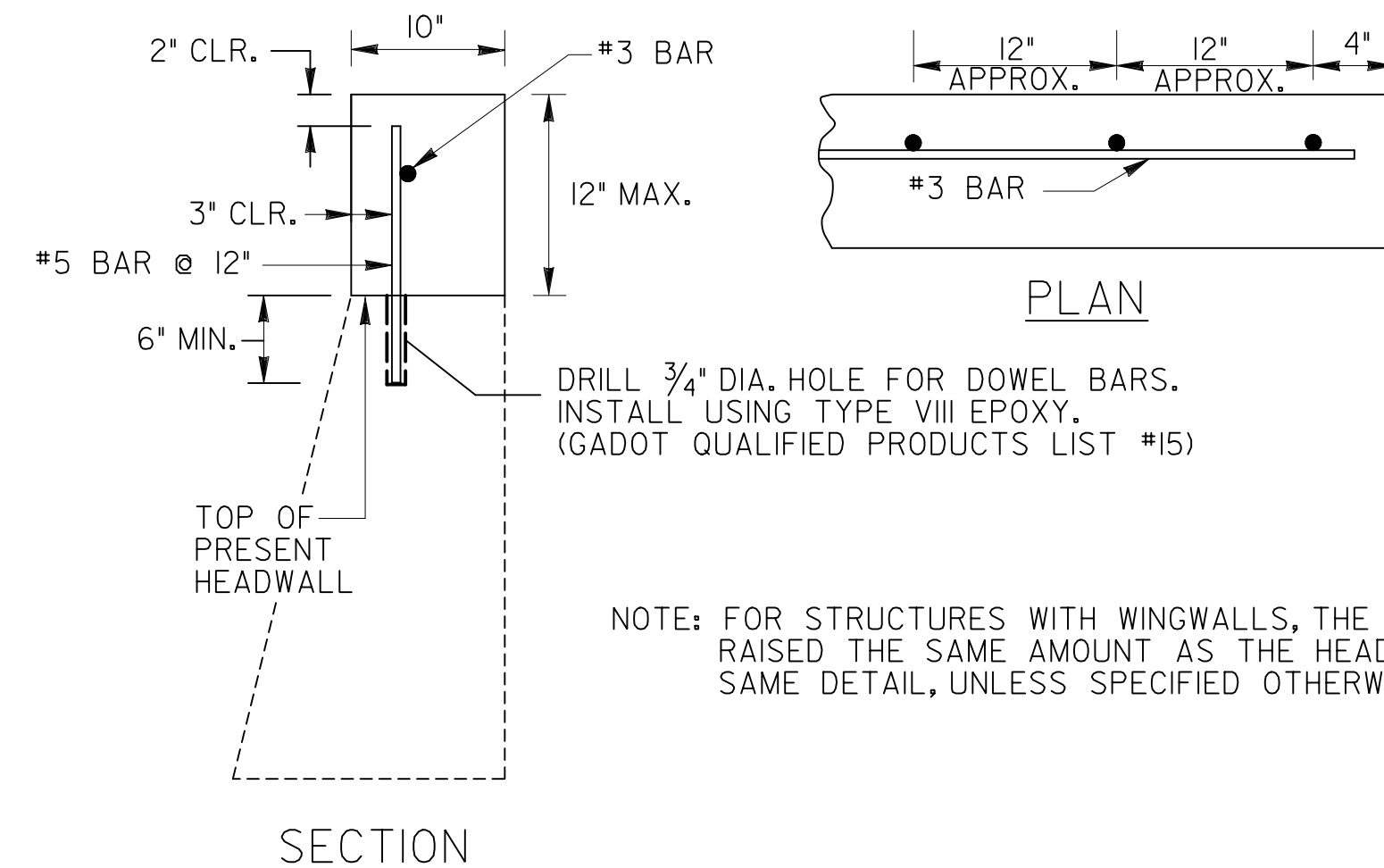
GENERAL NOTES:

- GRAVITY WALLS SHALL NOT BE USED WHEN HORIZONTAL DISTANCE FROM EDGE OF TRAVEL WAY TO FRONT FACE OF WALL IS LESS THAN  $(H + 1'0")$ .
- GRAVITY WALLS DESIGNED FOR THE FOLLOWING SOIL PROPERTIES:

	FOUNDATION	BACKFILL
COHESION =	0 PSF	0 PSF
$\theta$ =	28°	28°
UNIT WEIGHT =	120 PCF	120 PCF
- EXPANSION JOINTS SHALL BE LOCATED AT A MAXIMUM SPACING OF 90'-0" AND EXTEND THROUGH THE WALL. CONTRACTION JOINTS SHALL BE LOCATED AT A MAXIMUM SPACING OF 30'-0".
- GRAVITY WALLS WITH A VERTICAL FRONT FACE SHALL BE PAID FOR AS "CLASS B CONCRETE OR MORTAR RUBBLE MASONRY, RETAINING WALL". GRAVITY WALLS WITH A BARRIER FRONT FACE SHALL BE PAID FOR AS "CLASS A CONCRETE, RETAINING WALL". WATERPROOFING, JOINT FILLER, WALL DRAIN, AND OTHER INCIDENTAL ITEMS SHALL BE INCLUDED IN OVERALL BID SUBMITTED.

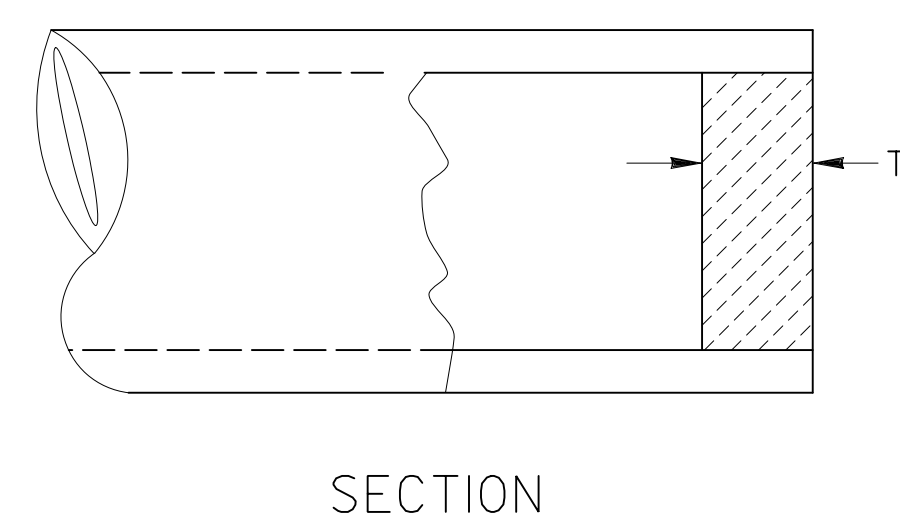
- A CONCRETE DITCH DETAIL FOR THE TOP OF THE WALL SHOULD BE INCLUDED IN THE ROADWAY PLANS WHEN WATER IS FLOWING TOWARDS THE BACK OF THE WALL. SEE CONSTRUCTION DETAIL D-49.
- FINISH EXPOSED SURFACES OF THE WALL WITH A TYPE III FINISH.
- APPLY GRAFFITI PROOF COATING AS PER SECTIONS 500 AND 838 OF THE GEORGIA DOT SPECIFICATIONS.
- ALL NECESSARY FENCE AND HANDRAIL SHOULD BE INCLUDED IN THE ROADWAY PLANS WHEN APPROPRIATE.
- GRAVITY WALL TYPICAL SECTIONS A, B, AND C HAVE BEEN DESIGNED PER THE AASHTO LRFD BRIDGE DESIGN SPECIFICATIONS, 7TH EDITION, 2014.

DETAIL FOR RAISING HEADWALL



NOTE: FOR STRUCTURES WITH WINGWALLS, THE WINGS SHALL BE RAISED THE SAME AMOUNT AS THE HEADWALL, USING THIS SAME DETAIL, UNLESS SPECIFIED OTHERWISE.

TYPICAL PIPE PLUG



NOTE: PLAN PAY QUANTITIES ARE TO REFLECT PIPE PLUGS AS CU. YDS. OF CL. B CONCRETE. ON CONSTRUCTION PLUGS MAY BE BUILT WITH BRICK MASONRY, MORTAR RUBBLE MASONRY, CL. A CONC., OR CL. B CONC. WITH NO ADJUSTMENT IN PAYMENT MADE FOR ALTERNATES.

D	T (MIN)	PIPE PLUG (CU. YDS.)
12"	8"	0.0194
15"	8"	0.0303
18"	8"	0.0436
24"	8"	0.0776
30"	8"	0.1212
36"	8"	0.1745
42"	8"	0.2376
48"	8"	0.3103
54"	12"	0.5890
60"	12"	0.7272
66"	12"	0.8799
72"	12"	1.0472

DATE		DEPARTMENT OF TRANSPORTATION STATE OF GEORGIA	
REVISION		STANDARD GRAVITY WALL TYPICAL SECTIONS, RAISING HEADWALL, AND TYPICAL PIPE PLUG	
NO SCALE:		REV. & REDR. SEPT, 2016	
BY	REV. & C.E.W. (SUBMITTED)	NUMBER 9031L	
CHK. D.D.E.	REDR. (APPROVED)	SHEET 1 OF 2	

9031L\_Revise.dwg\_2016-10-25.dgn