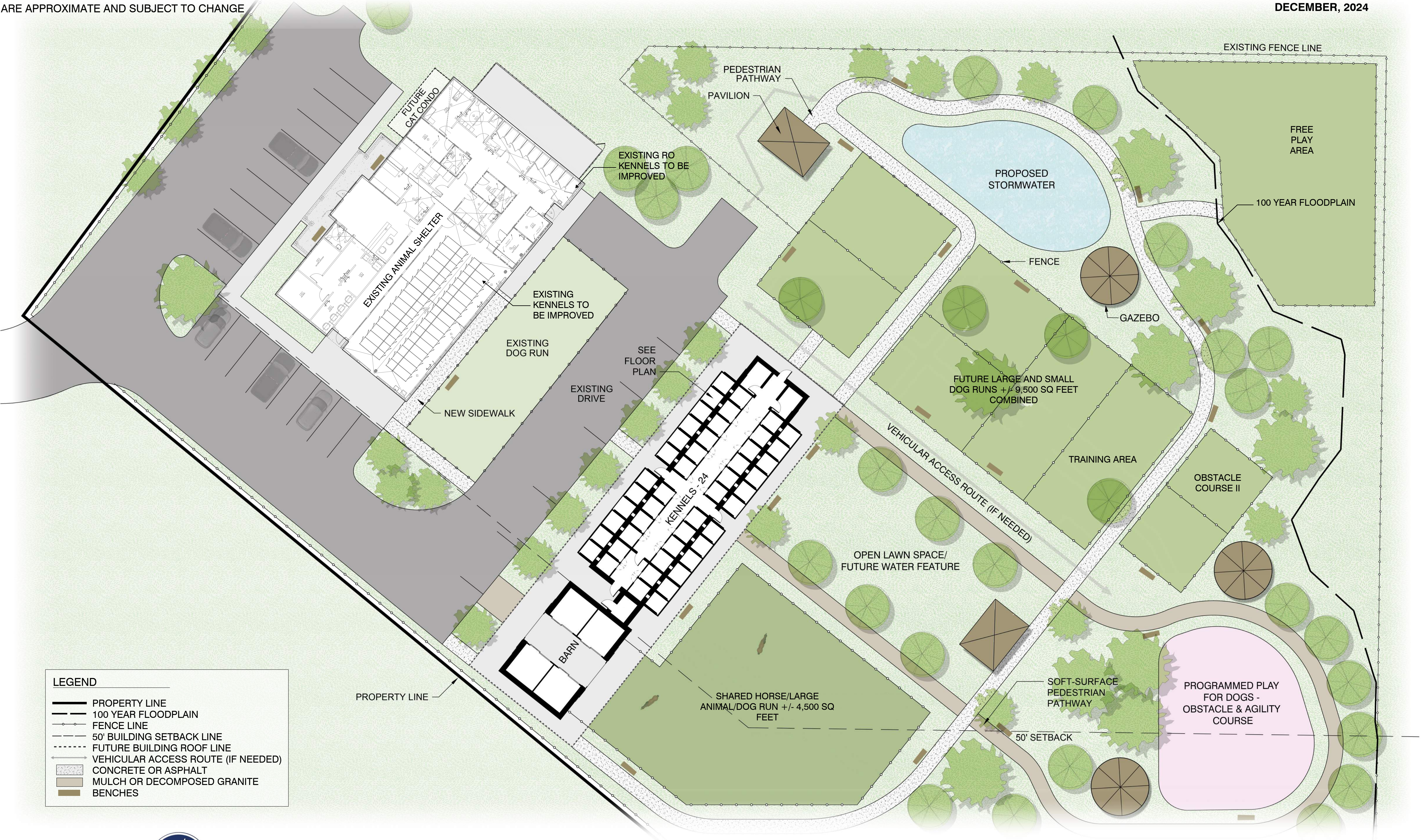


NOTE: SITE PLAN IS CONCEPTUAL. ALL LOCATIONS ARE APPROXIMATE AND SUBJECT TO CHANGE

DECEMBER, 2024



**LEGEND**

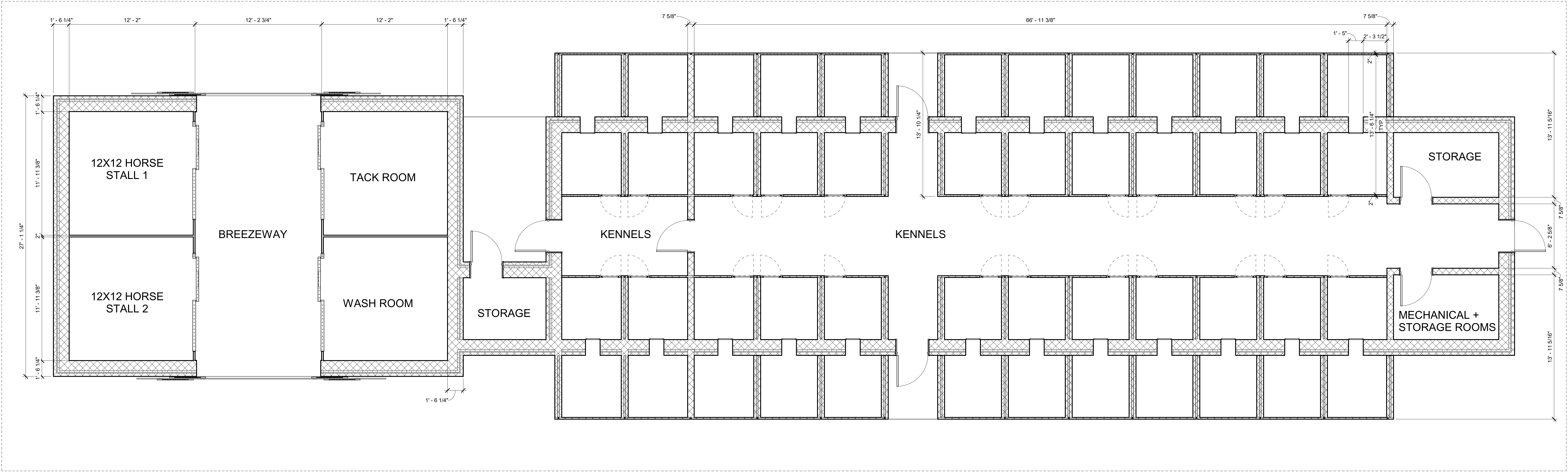
- PROPERTY LINE
- 100 YEAR FLOODPLAIN
- FENCE LINE
- 50' BUILDING SETBACK LINE
- FUTURE BUILDING ROOF LINE
- VEHICULAR ACCESS ROUTE (IF NEEDED)
- CONCRETE OR ASPHALT
- MULCH OR DECOMPOSED GRANITE
- BENCHES



Fayette County Animal Shelter Conceptual Site Plan







1 FLOOR PLAN  
SCALE: 1/4" = 1'-0"

# Fayette County Animal Shelter

## Phase II Building - Elevations



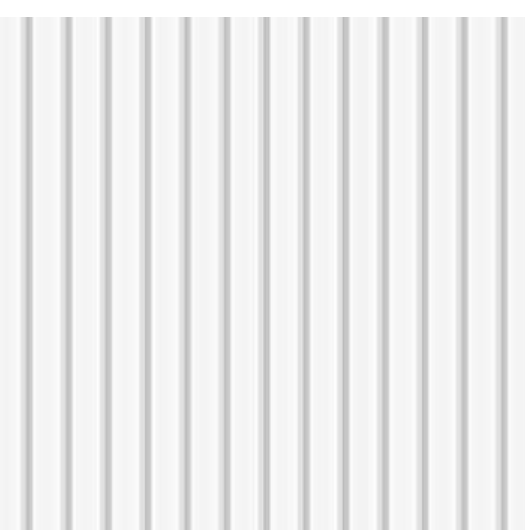
GLAZED CMU (INTERIOR)



STANDING SEAM METAL ROOF



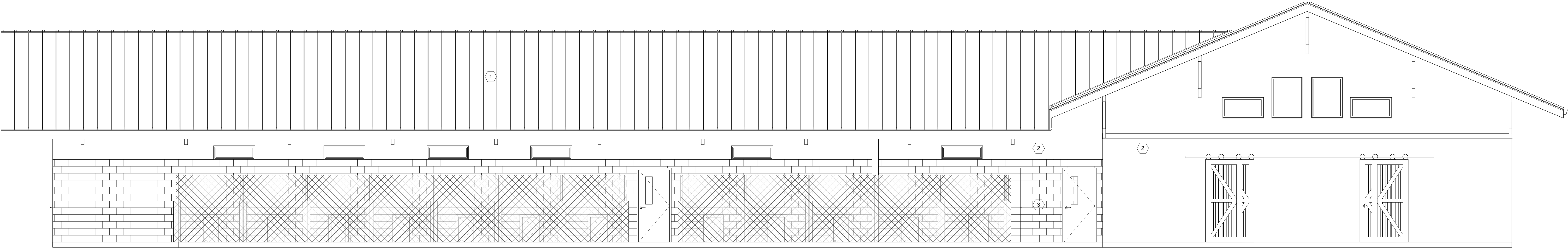
BLACK METALLIC FINISHES



METAL WALL PANEL

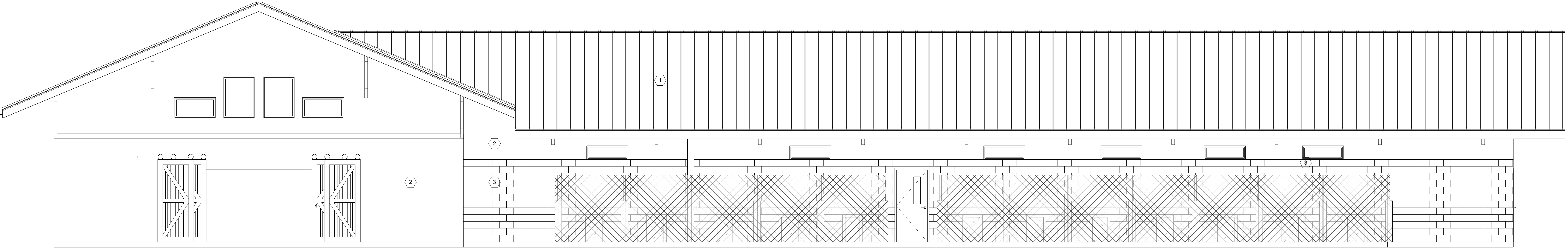


WHITE MASONRY



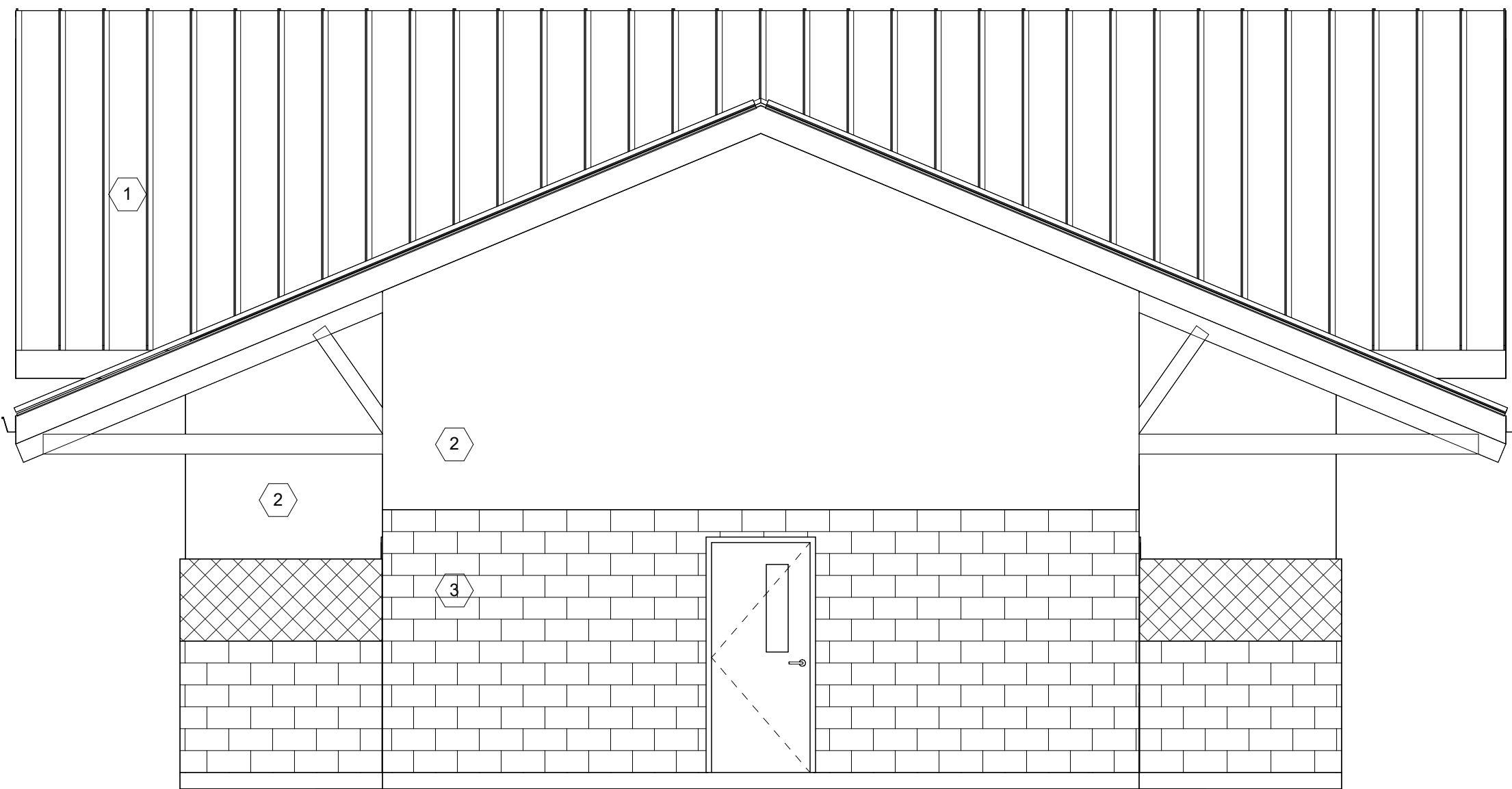
1 NORTH ELEVATION

SCALE: 1/4" = 1'-0"



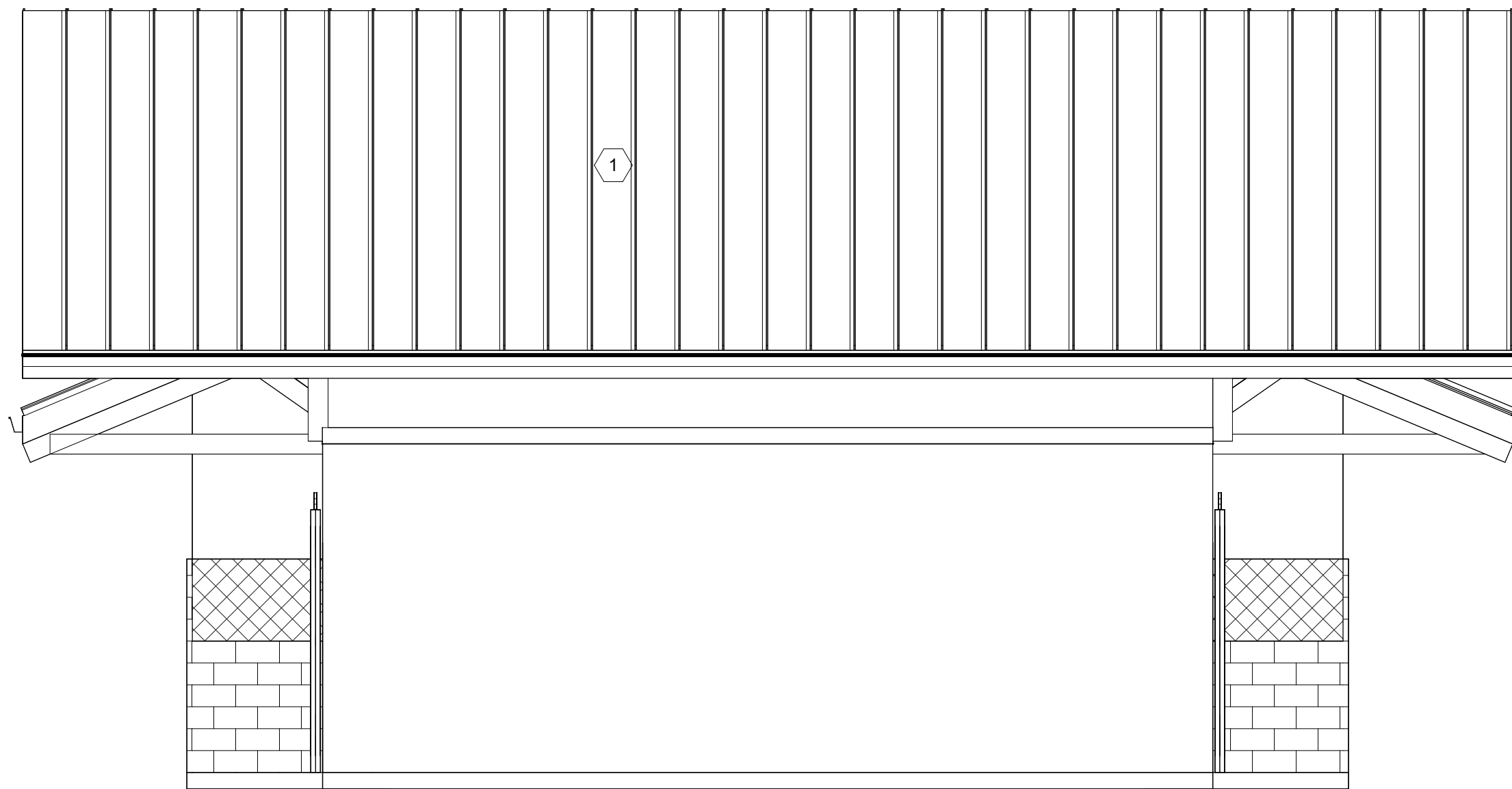
2 SOUTH ELEVATION

SCALE: 1/4" = 1'-0"



3 EAST ELEVATION

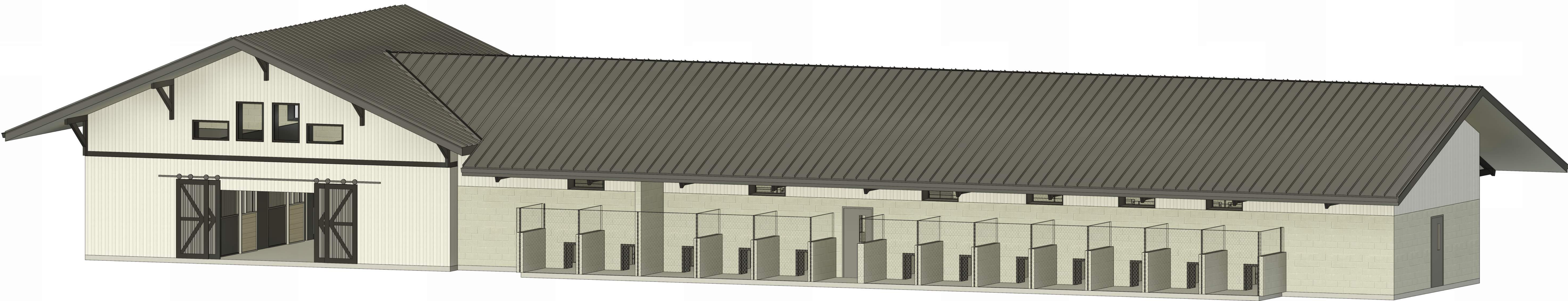
SCALE: 1/4" = 1'-0"



4 WEST ELEVATION

SCALE: 1/4" = 1'-0"





1 3D View  
N.T.S



Note: Below are precedent Images. The final building and site plan is its own design that will vary from these images.

Pavilions



**Pavilion - Gable**  
This is an example of a pavilion style.



**Gazebo**  
This is an example of a gazebo.

Trail



**Mulch Path**  
A trail material option is mulch.



**Slate Chip Trail**  
A trail material option is slate chips.

Kennels



**Interior Kennel Space Material - GLAZED CMU**  
New kennels could be constructed using glazed CMU, which is easier to clean, resulting in a more hygienic space.



**Interior + Exterior Kennels**  
The additional kennels will have interior and exterior access for the dogs, along with access to more greenspace.

Bioretention



**Bioretention - After Rain Event**  
Water retention with planting.



**Bioretention - Dry Condition**  
Attractive in both wet and dry conditions.

Horse Barn



**Horse Run**  
This illustrates how the project would have a horse run to allow greater movement and freedom for horses.



**Horse Barn**  
This image shows how a black and white color scheme could look for the barn, and is an example of a gable roof barn.

Horse Barn



**Horse Barn - Interior Sliding Doors**  
This illustrates a barn layout, with sliding doors and a central breezeway. Note: the interior of the barn may not feature wood.



**Horse Barn Wash Room**  
This illustrates a wash room layout and features. Note: the interior of the barn may not feature wood.