

User: Fayette

Plan Name: FayetteCCSB-Draft-2021

Plan Type: local

Population Summary

Friday, November 5, 2021

4:57 PM

Summary Statistics:

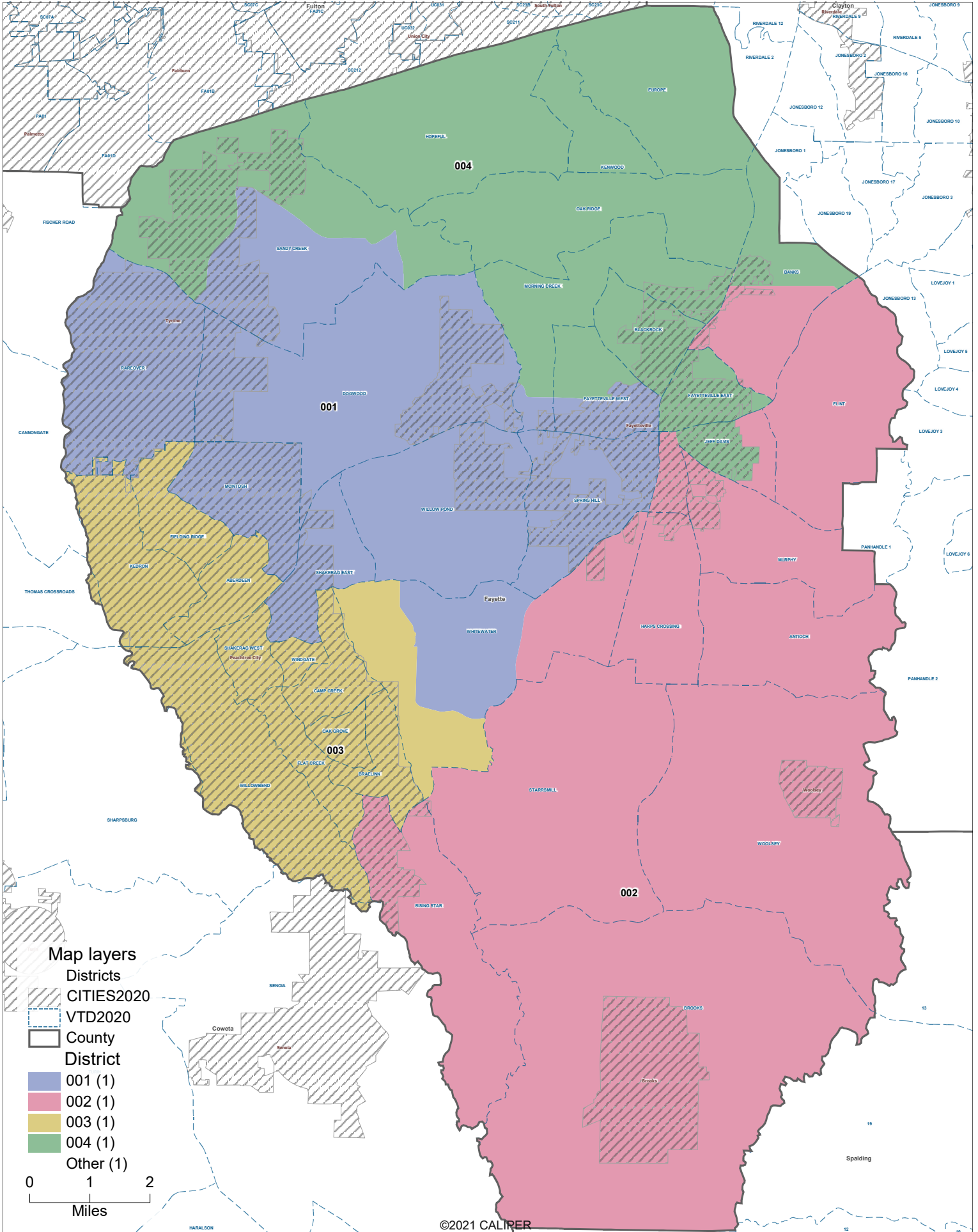
Population Range:	29,049 to 30,827
Ratio Range:	0.06
Absolute Range:	-750 to 1,028
Absolute Overall Range:	1,778
Relative Range:	-2.52% to 3.45%
Relative Overall Range:	5.97%
Absolute Mean Deviation:	732.00
Relative Mean Deviation:	2.46%
Standard Deviation:	761.53

District	Population	Deviation	% Devn.	[18+ _Pop]	[% 18+ _Pop]	[% NH_Wht]	[% NH_Blkl]	[% Hispanic Origin]	[% NH_Asn]	[% NH_Ind]	[% NH_Hwn]	[% NH_Oth]	[% NH_2+ Races]
001	29,084	-715	-2.40%	22,647	77.87%	61.18%	20.33%	8.6%	4.36%	0.19%	0.04%	0.89%	4.4%
002	30,234	435	1.46%	23,023	76.15%	68.18%	17.65%	5.67%	3.51%	0.18%	0.03%	0.63%	4.18%
003	30,827	1,028	3.45%	23,389	75.87%	69.21%	8.57%	8.02%	9.21%	0.11%	0.05%	0.63%	4.2%
004	29,049	-750	-2.52%	22,739	78.28%	28.92%	52.59%	9.62%	4.11%	0.23%	0.03%	0.7%	3.79%

Total: 119,194

Ideal District: 29,799

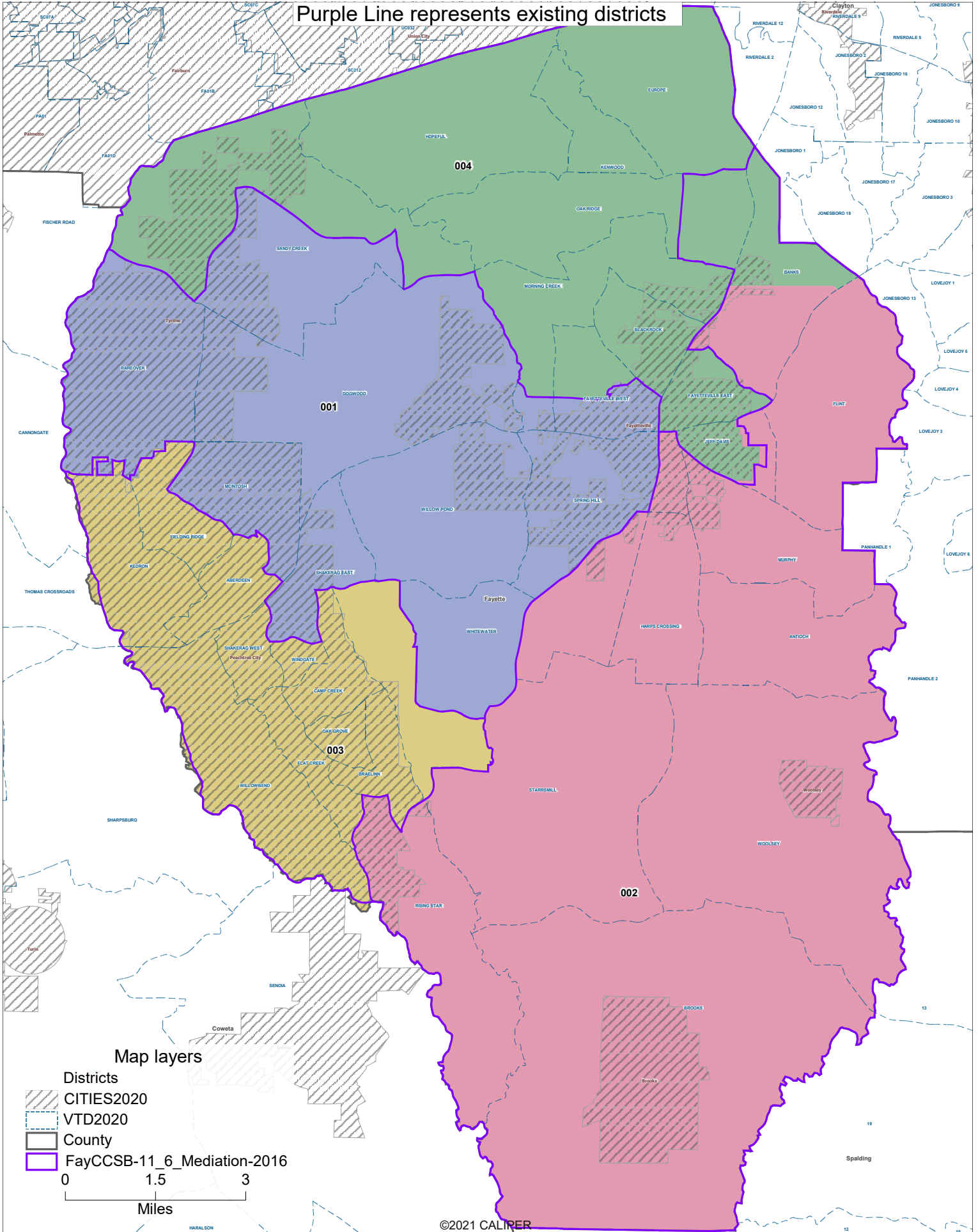
FayetteCCSB-Draft-2021



FayetteCCSB-Draft-2021



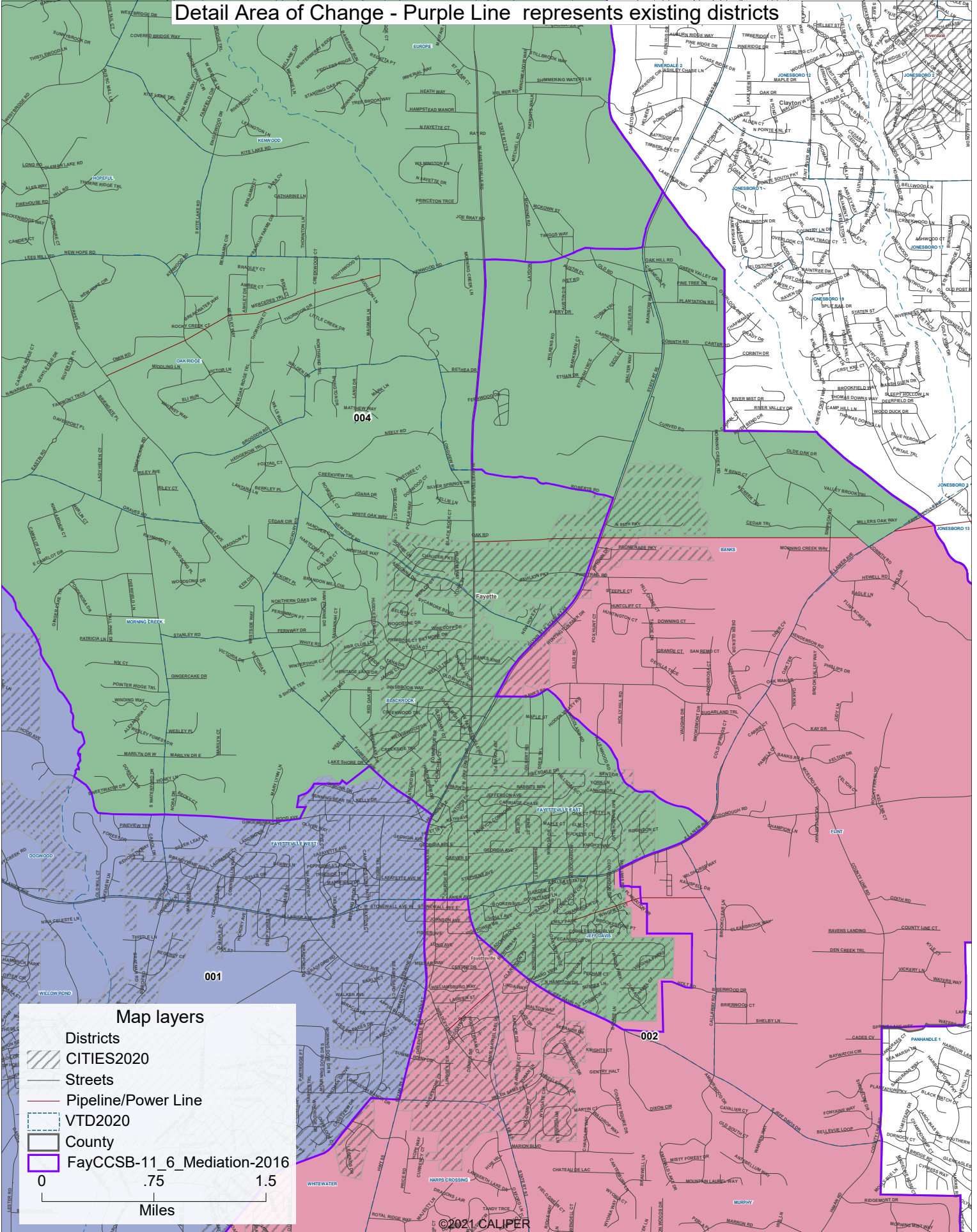
Purple Line represents existing districts



FayetteCCSB-Draft-2021



Detail Area of Change - Purple Line represents existing districts



Map layers

- Districts
- CITIES2020
- Streets
- Pipeline/Power Line
- VTD2020
- County
- FayCCSB-11_6_Mediation-2016

0 .75 1.5
Miles

©2021 CALIPER