



ADDENDUM NO. 2
TO THE CONTRACT DOCUMENTS

Date: June 10, 2015
Project No.: 497074

for the construction of

CROSTOWN WATER TREATMENT PLANT IMPROVEMENTS BID #960-B
FAYETTE COUNTY WATER SYSTEM
FAYETTE COUNTY, GEORGIA

To All Planholders and/or Prospective Bidders:

The following changes, additions, and/or deletions are hereby made a part of the Contract Documents for the construction of Crosstown Water Treatment Plant Improvements Bid #960-B dated May 2015 as fully and completely as if the same were fully set forth therein:

A. **QUESTIONS AND ANSWERS, attached.**

B. **PART 2—CONTRACTING REQUIREMENTS**

1. **Section 00 52 13, Agreement**

Page 2, paragraph 5.2.1.1, DELETE in its entirety and renumber subsequent paragraphs.

C. **PART 3—SPECIFICATIONS**

1. **Section 01 57 13, Temporary Erosion and Sediment Control**

Page 6, paragraph 3.03.C, DELETE two instances of "Seeding and Sodding" and REPLACE with "Seeding"

2. **Section 40 27 00, Process Piping – General**

Supplement 2, ADD the following services to table Piping Schedule

Chemical Carrier Pipe	CP	ALL	BUR, EXP, ENC	PVC	40 27 00.10	W		15, H		
Powdered Activated Carbon Slurry	PACS	ALL	EXP, BUR	PVC	40 27 00.10	W		15, H		

3. **Section 40 27 02, Process Valves and Operators**

Page 9, paragraph 2.05.C.2.e, ADD the following:

“3) Val-Matic; AWWA Valve.”

4. **Section 40 90 01, Instrumentation and Control for Process Systems**

Supplement 2, ADD the following panels to table Instrument and Control Panel List

CP-CHEM1	N/A	Chemical Building PLC Cabinet	NEMA 4X 316SS Max Allowable Dimensions: 4'H x 3'W x 1.5'D	I-02	4091-383	
NC-F-CR	N/A	Network Cabinet	NEMA 12 Network Rack containing UPS, Fiber Optic Patch Panel and Ethernet Network Switch	I-06		

5. **Section 43 40 01 Polyethylene Storage Tank**

Supplement 1, Tank Data Sheet, DESIGN DATA, DELETE “WIND LOADS: NO SNOW LOADS: NO” and REPLACE with DELETE “WIND LOADS: YES SNOW LOADS: YES”

6. **Section 43 40 02, Fiberglass Reinforced Plastic Tank**

Supplement 1, Tank Data Sheet, DESIGN DATA, DELETE “WIND LOADS: NO SNOW LOADS: NO” and REPLACE with DELETE “WIND LOADS: YES SNOW LOADS: YES”

7. **Section 43 40 20, Powdered Activated Carbon Storage and Feed System**

Page 8, paragraph 2.09.A, DELETE in its entirety and REPLACE with the following:

“A. Air compressor system including a 20 gallon receiving tank shall be included within the bulk bag feed system with a skid mounted transformer and panel rated 120 volt, single-phase.”

Page 8, paragraph 2.10.A, DELETE “PVC” and REPLACE with “stainless”

Page 9, paragraph 2.11.G.2, DELETE last sentence.

Page 10, paragraph 2.11.I.3, DELETE in its entirety and renumber subsequent paragraphs.

Page 11, paragraph 2.13.A, DELETE “1 Feeder motor speed pickup”

8. **Section 44 43 34, Filter Underdrain System**

Page 1, paragraph 1.01.B, DELETE “, installation of equipment”.

Page 1, paragraph 1.01.C, DELETE “handling, coordination” and REPLACE with “handling, installation of equipment, coordination”.

D. **PART 4—DRAWINGS**

1. Drawing G-03 General Site Notes 10, DELETE “SHALL BE COVERED WITH COMMON BERMUDA GRASS.” and REPLACE with “SHALL BE STABILIZED PER SPECIFICATION 01 57 13, TEMPORARY EROSION AND SEDIMENT CONTROL.”
2. Drawing G-11 grid location 5C, DELETE “SP SAMPLE PIPE” and REPLACE with “SP SODIUM PERMANGANATE”.
3. Drawing C-02, DELETE in its entirety and REPLACE with revised attached.

4. Drawing C-03

Grid location 4B, DELETE “GROUNDING CLUSTER” and REPLACE WITH “GROUNDING CLUSTER (SEE DWG 20-E-01)”

Grid location 6A, DELETE “SEE NOTE 3” and REPLACE with “SEE NOTE 2”

Grid location 6A, DELETE “24” DW DIP” and REPLACE with “24” DW DIP W/ CROWN 8’ BELOW GRADE”

5. Drawing I-01, DELETE in its entirety and REPLACE with revised attached.
6. Drawing I-02, DELETE in its entirety and REPLACE with revised attached.
7. Drawing I-06, DELETE in its entirety and REPLACE with revised attached.
8. Drawing 20-M-03 grid locations 2B and 2D, REVISE depiction of truck delivery feed stations to match detail 4027-975X1.
9. Drawing 20-S-01 grid location 1A, DELETE “9’-0”” and REPLACE with “11’-0””
10. Drawing 30-M-01 grid location 3A, DELETE “4027-607A” and REPLACE with “4027-607”.
11. Drawing 30-M-02, at all four valves FV30X-4, DELETE depiction of RFAs.
12. Drawing 30-M-03 grid location 3A, DELETE “4027-607A” and REPLACE with “4027-607”.
13. Drawing 30-M-04

At all four valves FV30X-4, DELETE depiction of RFAs.

Grid location 1A, DELETE “4027-607A” and REPLACE with “4027-607”.
14. Drawing 30-M-05 Section C, at valve FV303-4, DELETE depiction of RFA.
15. Drawing 30-M-06 Section D, at valve FV307-4, DELETE depiction of RFA.
16. Drawing SD-01 Detail 3123-115, DELETE all mentions of “SOD” and REPLACE with “PERMANENT SEEDING”.

17. Drawing SD-09

DELETE Detail 4091-154G in its entirety.

ADD Detail 4091-206 PRESSURE DIFFERENTIAL
TRANSMITTER/INDICATOR FOR FLOW SERVICE attached.

All Bidders shall acknowledge receipt and acceptance of this Addendum No. 2 in the Bid Form or by submitting the Addendum with the bid package. Bid Forms submitted without acknowledgment or without this Addendum will be considered in nonconformance.

CH2M HILL

Project Manager

Michael E. Diaz, P.E., M.S.

Appended hereto and part of Addendum No. 2:

Questions and Answers, attached.

Drawing C-02, attached.

Drawing I-01, attached.

Drawing I-02, attached.

Drawing I-06, attached.

Detail 4091-206, attached.

END OF ADDENDUM

ADDENDUM NO. 2
CROSSTOWN WATER TREATMENT PLANT IMPROVEMENTS BID #960-B
FAYETTE COUNTY WATER SYSTEM
FAYETTE COUNTY, GEORGIA

QUESTIONS AND ANSWERS

Q1. Per spec section 00 52 13-2, the Agreement has the alternate as 5.2.1.1.1 Sodium Permanganate Fiberglass Building, this is not on the bid form, should it be?

A1. No. See Addendum 2.

Q2. Are the two "Cash Allowances" to be included with the Lump Sum Bid Price?

A2. Yes. Refer to 00 41 13.7.5.3 and 00 52 13.5.2.1.2.

Q3. Note 10 on G-03 calls for grassing on disturbed areas – does this mean seeding? Detail 3123-115 (on sheet SD-01) surface restoration for trenching has a detail labeled "Grassing" that calls for sod. Please confirm disturbed areas are to be seeded

A3. Yes. See Addendum 2.

Q4. Reference drawing C-03, to what is note "Replace ground triangle with grounding cluster" referring?

A4. See Drawing 20-E-01 grid location 3A. See Addendum 2.

Q5. Reference drawing C-02: is the line labeled "One (1) 4"CP W/1"SP" part of this contract? This same line is also labeled "4" CP W/ 1-1/2" PACS" in different location. Please provide details for this line

A5. No. See Addendum 2.

Q6. Reference drawing 20-S-01: equipment pad type H is called out as 9'0x4'6 but it measures 11'0x4'6. Please confirm size of equipment pad

A6. See Addendum 2.

Q7. ALP SS pipe penetrations at existing walls. Where pipe penetrates walls on sheets 45-50, reference is made to Detail 4027-607A showing a cast steel wall sleeve in a new wall. This conflicts with notes on sheet 48 stating "Core drill hole and seal w/link seal". Please confirm wall penetrations should be installed per Detail 4027-607 (Existing Wall Penetration Seal), and not 4027-607A (Wall Pipe Penetration Seal).

A7. See Addendum 2.

Q8. We find note on various drawings stating..."Refer to miscellaneous small items cash allowance for additional work not shown on this drawings." Please clarify. Is this the same as the \$40,000 cash allowance for "Unforeseen Work Elements."

A8. See future Addendum.

Q9. Emergency eyewash fixtures are referenced to a Detail SSH-629-1. We don't find detail provided in documents. Please provide a material specification for the eyewash stations

A9. Callout SSH-629-1 is the tag number for the fixture. Refer to 40 27 01-2.08.B.

Q10. Where "truck delivery feed" shown on sheet 34, reference is made to Detail 4027-9765X1. The illustrations on Sheet 34 don't match detail referenced. Is the fill station "catch basins" shown on Sheet 34 a manufactured product or custom fabricated? Please provide additional clarification.

A10. Manufactured. See Addendum 2.

Q11. We find a discrepancy in notes on Sheet 16. Note regarding concrete encasement of the 24" RW DIP line makes reference to Note 3. Note 3 is in reference to 2" PUR-CPVC sump drain line to curb. Please clarify.

A11. See Addendum 2.

Q12. What is the depth of the 24" RW line to be concrete encased?

A12. See Addendum 2.

Q13. Clarify the scope and extent of 1-1/2" PACS line within this contract, as we find sheet C-02 confusing as to what is in contract, and what is N.I.C between the new Powdered Activated Carbon Storage Tower and the injection locations at the Lake McIntosh Meter Pit & Raw Water Meter Pit.

A13. See Addendum 2.

Q14. Clarify the pipe material specification for the PACS, as we do not find listed in the Piping Schedule, section 40 27 00.

A14. See Addendum 2.

Q15. Clarify the requirements for installing chemical injectors at the Lake McIntosh Meter Pit & Raw Water Meter Pit. What are the waterline pipe sizes in these meter pits?

A15. See Addendum 2.

Q16. Within how many feet is the tap location of the W2 water line and the Powdered Activated Carbon Storage Tower pad?

A16. Scale per Drawing C-02.

Q17. Sheet C-02 (15 of 73) shows 3 dashed lines from the existing building to the area of the new PAC System and Chemical Building that is not in this contract. Please look at the dashed lines, are all of these lines not in this contract? If they are not, please designate the one (1) 4" CP w/1" SP as not in contract. The northern most line is called two different services on this drawing, what is it? Are the chemical vaults shown in dashed lines all not in this contract?

A17. See Addendum 2. The Chemical Vaults are not in this contract.

Q18. What does the 2" W2 designation refer to on Sheet C-02? Does this mean the existing W2 line in this area is a 2" line? If so where is it located? Or is the line to be tapped the 4" W1 line shown on this drawing? Do we use detail 4027-643X for the tap detail in this area? Please provide a detail of this area and where the W2 line is to be tapped that feeds water to the PAC System

A18. See Addendum 2.

Q19. What does CP mean on sheet C-02? There is no service, exposure or description of this line. What type of material is this pipe?

A19. See Drawing G-11. See Addendum 2.

Q20. The Process Valves specification does not refer to FV-676-1, is this valve by the manufacturer of the PAC equipment?

A20. See Drawing I-01.

Q21. What type of pipe supports are required for the 1 ½" PAC Line and W2 lines shown on sheet 10-M-01?

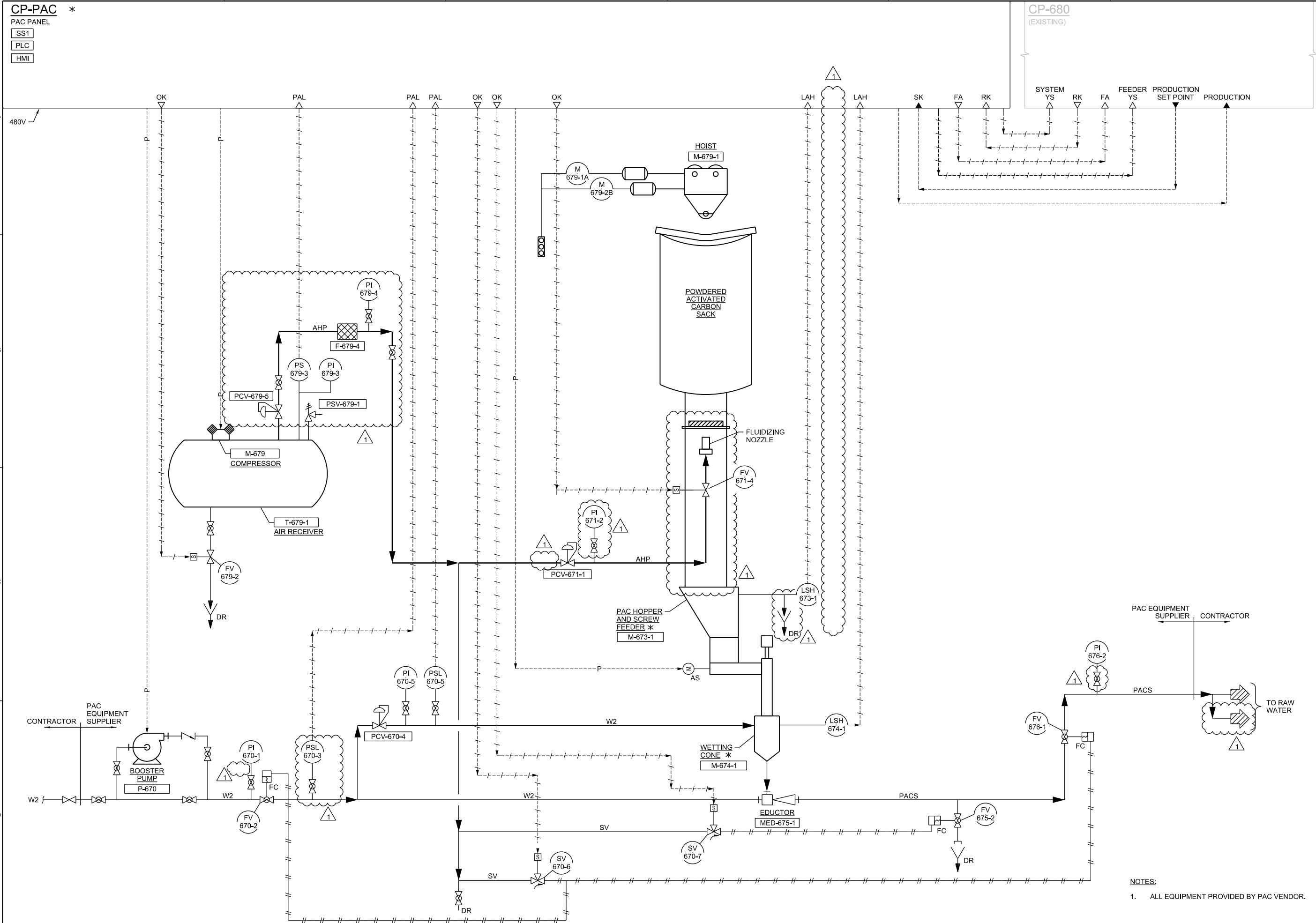
A21. See 43 40 20-2.05.F.

Q22. PACS is not listed on the piping schedule legend, please confirm the material is PVC as valve V330 is PVC on this same line

A22. See Addendum 2.

Q23. Specification section 014533 states the Special Inspection and Testing required, and states in section 1.05C the owner pays for the services of the agency to perform the inspection and testing. We assume this also means that design professional retained by the owner will prepare all submittal information, inspection plans required, statement of special inspections and perform any special testing required. Please confirm this. Who will sign the attached form named "Contractors Statement of Responsibility", the contractor or the party retained by the owner?

A23. Contractor signs form per 01 45 33-1.04.A.1.



6600 Peachtree Dunwoody Road
400 Embassy Row, Suite 600
Atlanta, GA 30328
Phone: 770-604-9055

CH2MHILL®

INSTRUMENTATION AND CONTROL
P&ID
PAC STORAGE AND FEED SYSTEM

1

06/2015

ADDENDUM NO. 2

GM

CB

BY

APVD

REVISION

CHK

DR

DSGN

NO.

DATE

1

06/2015

ADDENDUM NO. 2

GM

CB

BY

APVD

REVISION

CHK

DR

DSGN

NO.

DATE

NTS

VERIFY SCALE

BAR IS ONE INCH ON ORIGINAL DRAWING.

DATE

MAY 2015

PROJ

497074

DWG

I-01

SHEET

19 of 73

CONTRACTOR

PAC EQUIPMENT SUPPLIER

PACS

TO RAW WATER

6600 Peachtree Dunwoody Road
400 Embassy Row, Suite 600
Atlanta, GA 30328
Phone: 770-604-9055

CH2MHILL®

INSTRUMENTATION AND CONTROL
P&ID
PAC STORAGE AND FEED SYSTEM

1

06/2015

ADDENDUM NO. 2

GM

CB

BY

APVD

REVISION

CHK

DR

DSGN

NO.

DATE

1

06/2015

ADDENDUM NO. 2

GM

CB

BY

APVD

REVISION

CHK

DR

DSGN

NO.

DATE

NTS

VERIFY SCALE

BAR IS ONE INCH ON ORIGINAL DRAWING.

DATE

MAY 2015

PROJ

497074

DWG

I-01

SHEET

19 of 73

CONTRACTOR

PAC EQUIPMENT SUPPLIER

PACS

TO RAW WATER

6600 Peachtree Dunwoody Road
400 Embassy Row, Suite 600
Atlanta, GA 30328
Phone: 770-604-9055

CH2MHILL®

INSTRUMENTATION AND CONTROL
P&ID
PAC STORAGE AND FEED SYSTEM

1

06/2015

ADDENDUM NO. 2

GM

CB

BY

APVD

REVISION

CHK

DR

DSGN

NO.

DATE

1

06/2015

ADDENDUM NO. 2

GM

CB

BY

APVD

REVISION

CHK

DR

DSGN

NO.

DATE

NTS

VERIFY SCALE

BAR IS ONE INCH ON ORIGINAL DRAWING.

DATE

MAY 2015

PROJ

497074

DWG

I-01

SHEET

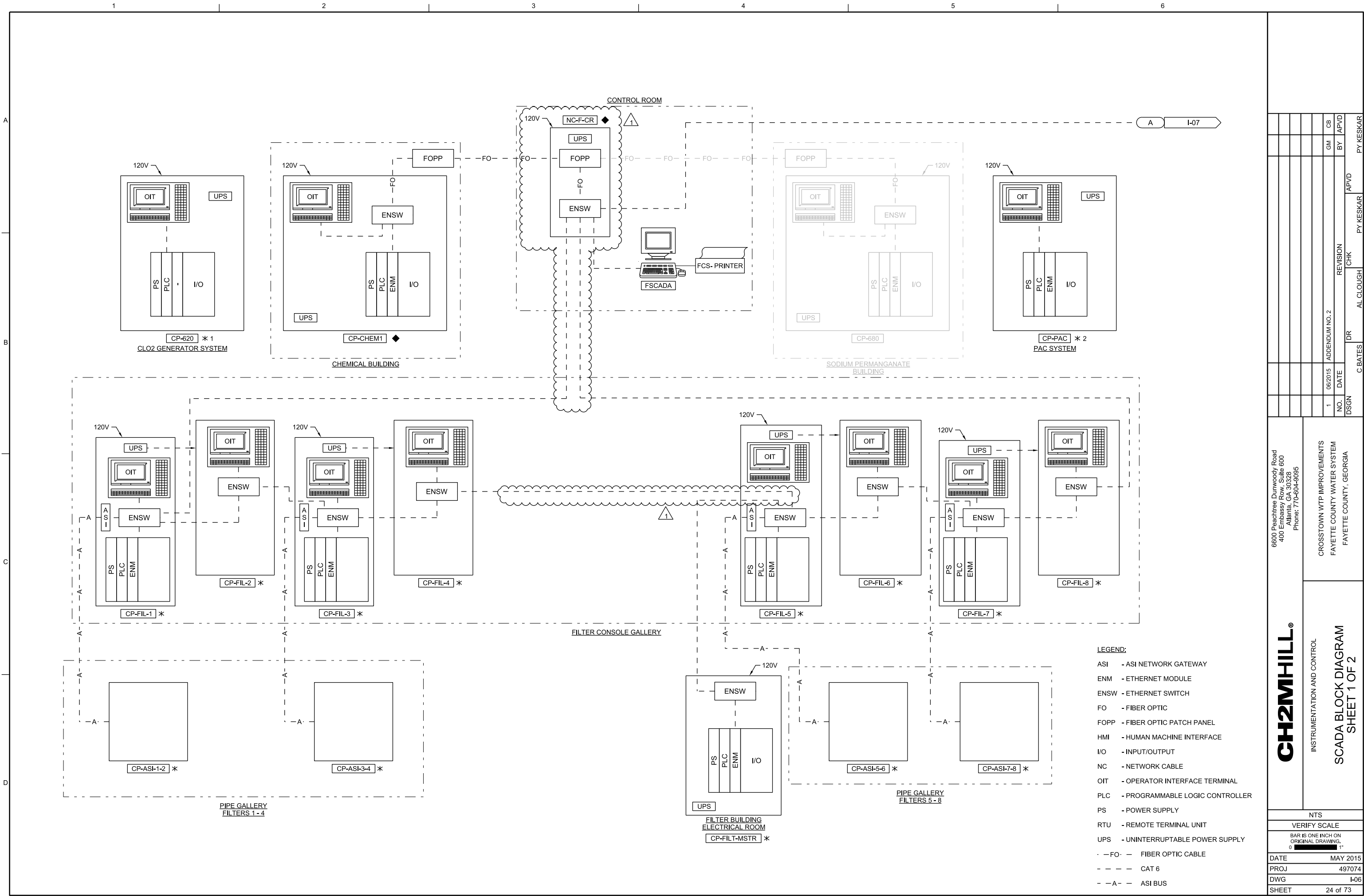
19 of 73

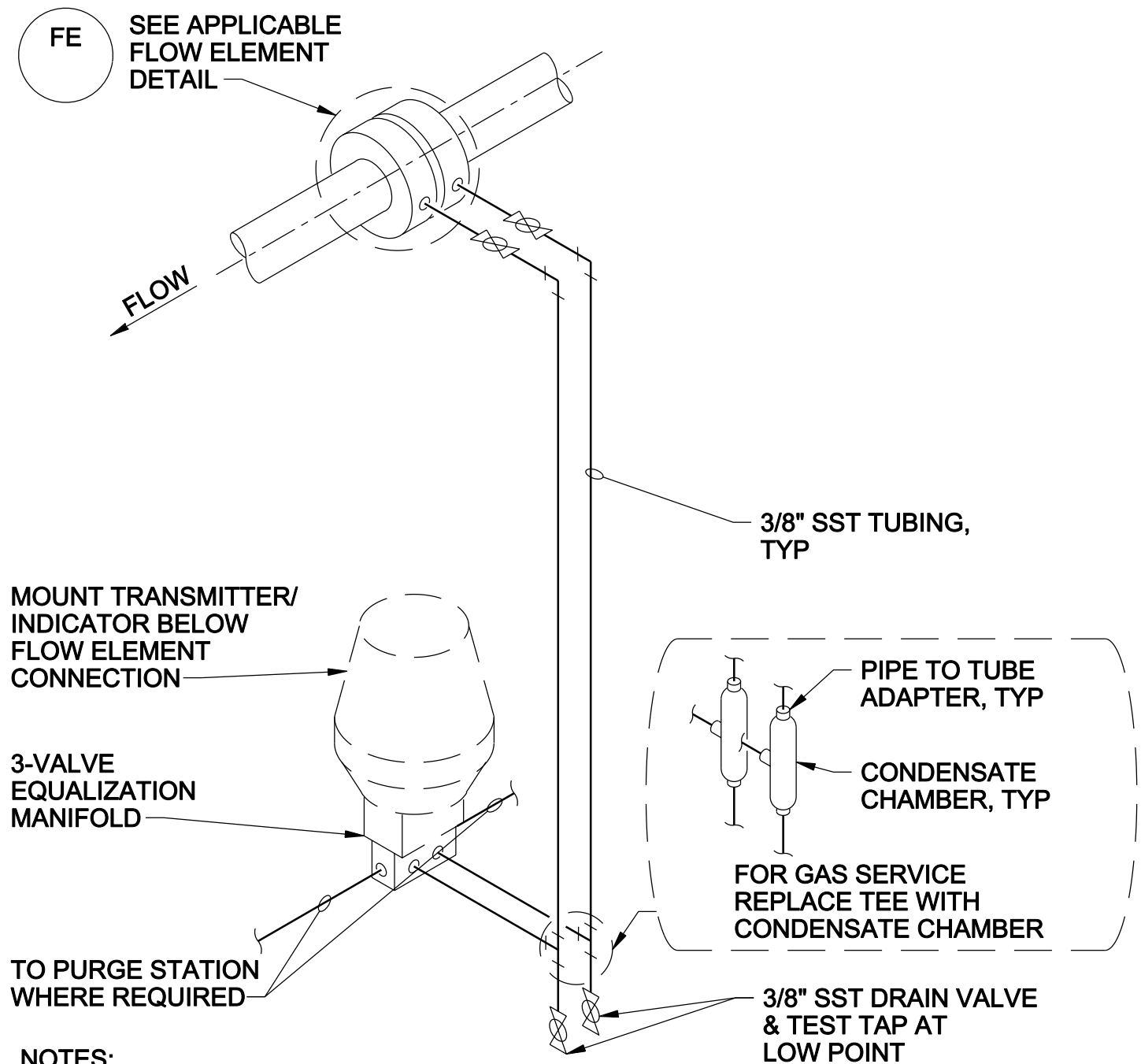
CONTRACTOR

PAC EQUIPMENT SUPPLIER

PACS

TO RAW WATER



**NOTES:**

1. FOR LIQUID SERVICE, SLOPE ALL LINES DOWNWARD TOWARD INSTRUMENT.
2. FOR GAS SERVICE, SLOPE ALL LINES DOWNWARD TOWARD CONDENSATE CHAMBER.
3. ALL LINES SHALL HAVE A CONTINUOUS SLOPE OF 1/4" PER FOOT MIN (1" PER FOOT PREFERRED).

PRESSURE DIFFERENTIAL TRANSMITTER/INDICATOR FOR FLOW SERVICE

NTS

4091-206

