

June 20, 2018

**Subject: ITB #1516-B: Broom Boulevard Culvert Replacement – Addendum 1**

Gentlemen/Ladies:

Below, please find responses to questions, clarification, or additional information for the above referenced Invitation to Bid. You will need to consider this information when preparing your bid.

1. From the approach end on both runs of rail there is a type 12 A anchor they are approximately 50 ft. long- that means you have a breakaway product protecting the warranted area, and some of the posts in the type 12 are on the culvert, with shallow fill these posts would have to be in concrete- however we cannot put the type 12 posts in concrete. Additional w-beam rail per 4380 is needed to get type 12 off of the culvert. The details in the drawing only show the anchors type 1 and type 12 they do not show the rail. The plans should call out w-beam if that is his design.

**a. It appears that more rail is needed to protect the warranted area, please clarify?**

Guardrail lengths were determined based on engineering judgement. Broom Blvd is a low volume (approximately 13 homes) low speed (25 mph) road. Based on this a length of approximately 75' of guardrail was deemed appropriate.

**b. Can you address the issue of having breakaway rail over the culvert area?**

Detail 3 on sheet C-504, GDOT 4383 has been replaced with GDOT 4381. This detail specifies steel posts instead of timber breakaway posts.

**c. Will any revisions be made to the guardrail design?**

- i. The extents of the guardrail have remained the same however the anchorage details have been updated (see the comment response for questions a. and b.). These changes are reflected in Addendum #1.
- ii. Additionally, to avoid any conflict with the replacement waterline and the guardrail posts, an additional 30' of 8" DIP waterline has been added to the plans (reflected on sheets C-102 through C-105).

**2. I just want to confirm that the wings walls, and parapets can be pre-cast?**

Precast or Cast-in-Place is acceptable.

**3. Existing Conditions - Will a soil boring report be issued or will the job need to be priced as unclassified soils?**

There will not be a soil boring report issued for the project.

**4. Existing Conditions - In the event that unsuitable soils are encountered, will the GC be at risk for this or will it be addressed based on submitted unit prices?**

The GC is at risk for unsuitable soils that are encountered.

**5. Pre-Cast Culvert - Is the pre-cast culvert material to be purchased by the county or should the GC include purchasing as well as install?**

The GC should purchase and provide the cost to install the precast or cast-in-place culvert.

**6. Asphalt - Asphalt is not listed on the bid tab. Is asphalt to be included in our bid? If so, which line item should it be included within?**

Please include asphalt and road repair costs in the Culvert Installation item.

**7. Striping - Should any asphalt striping be included in the bid?**

Broom Blvd is not currently striped and therefore no striping should be included within the bid.

Received by \_\_\_\_\_ Company \_\_\_\_\_

Note: If this addendum is not returned to the Fayette County Purchasing Department or if it is returned not signed, all responders shall still be responsible for the requirements of this addendum and the specifications or changes herein.

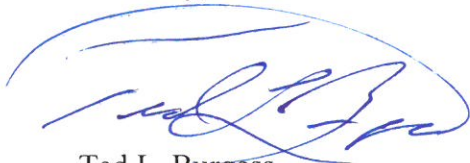
The opening date for this Invitation to Bid has not changed. **The opening date is: 3:00pm, Tuesday, June 26, 2018.** Bids must be received in the Purchasing Department at the address above in Suite 204 on or before the opening date and time.

So that this project can be completed in a timely manner, the time for submitting questions has expired.

If you have already submitted a bid, it will be opened and read on the opening date. If you would not like your bid opened or should you desire to submit a new bid, your original bid must be picked up, or you must notify the Fayette County Purchasing Department **in writing** to, email address: [tbarwicks@fayettecountyga.gov](mailto:tbarwicks@fayettecountyga.gov) or fax to (770) 719-5515 of your desire to not have your bid opened.

Thank you for your attention to this matter.

Sincerely,



Ted L. Burgess  
Director of Purchasing

TLB/tcb

Attachments

**DEMOLITION NOTES:**

- A. PROTECTION:**
1. PERFORM DEMOLITION SO AS TO PREVENT DAMAGE TO ADJACENT IMPROVEMENTS AND FACILITIES TO REMAIN.
  2. PROTECT NEW OR EXISTING WORK FROM DAMAGE DURING DEMOLITION OPERATIONS.
  3. PROTECT EXISTING SITE APPURTENANCES AND LANDSCAPING TO REMAIN.
  4. DAMAGES: WITHOUT COST TO THE OWNER AND WITHOUT DELAY, REPAIR ANY DAMAGES CAUSED TO FACILITIES TO REMAIN.
- B. REMOVAL & DISPOSAL OF DEMOLISHED MATERIALS:**
1. ALL DEMOLISHED OR REMOVED ITEMS AND MATERIALS SHALL BE CONSIDERED SCRAP EXCEPT FOR THOSE INDICATED TO REMAIN, THOSE INDICATED TO BE REINSTALLED, THOSE INDICATED TO BE SALVAGED, AND HISTORICAL ITEMS.
  2. CONSTRUCTION OR ITEMS INDICATED TO REMAIN SHALL BE PROTECTED AGAINST DAMAGE DURING DEMOLITION OPERATIONS.
  3. PROMPTLY DISPOSE OF MATERIALS RESULTING FROM DEMOLITION OPERATIONS. DO NOT ALLOW MATERIALS TO ACCUMULATED ON SITE.
  4. TRANSPORT MATERIALS RESULTING FROM DEMOLITION OPERATIONS AND LEGALLY DISPOSE OF OFF-SITE.
  5. OFF-SITE DISPOSAL LOCATION SHALL NOT BE WITHIN ONE-HALF MILE OF ANY PORTION OF THE PROJECT SITE OR WITHIN SIGHT OF THE PROJECT SITE.
  6. DO NOT BURN REMOVED MATERIALS ON PROJECT SITE.
  7. CONTRACTOR TO COORDINATE THE LOCATION OF ANY MATERIAL LAYDOWN AREAS WITH THE COUNTY.
- C. POLLUTION CONTROLS:**
1. CONTROL THE SPREAD OF DUST AND DIRT WITH PRACTICAL MEANS.
  2. OBSERVE ENVIRONMENTAL PROTECTION REGULATIONS.
  3. DO NOT ALLOW WATER USAGE THAT RESULTS IN FREEZING OR FLOODING.
  4. DO NOT ALLOW ADJACENT IMPROVEMENTS TO REMAIN OR BECOME SOILED BY DEMOLITION OPERATIONS.
- D. CLEANING:**
1. REMOVE TOOLS AND EQUIPMENT. DISPOSE OF SCRAP.
  2. LEAVE EXTERIOR AREAS FREE OF DEBRIS.
  3. CLEAN SOIL, SMUDGES, AND DUST FROM SURFACES TO REMAIN.
  4. RETURN STRUCTURES AND SURFACES TO REMAIN TO CONDITION EXISTING PRIOR TO COMMENCEMENT OF DEMOLITION.

**NOTES:**

1. CONTRACTOR TO MAINTAIN ONE LANE OF TRAFFIC AT ALL TIMES THROUGHOUT PROJECT.
2. ALL CONCRETE FORMWORK AND REINFORCING BARS TO BE INSPECTED BY THE FIELD REPRESENTATIVE IN CONJUNCTION WITH THE CONTRACTORS REPRESENTATIVE BEFORE CONCRETE IS PLACED.
3. AS-BUILT DRAWINGS SHALL CONTAIN ALL RELEVANT ELEVATIONS AND INVERTS AND THEIR LOCATIONS.
4. CONTRACTOR TO ESTABLISH TEMPORARY SUPPORT FOR EXISTING UTILITIES AND MAINTAIN IT THROUGHOUT CONSTRUCTION.
5. CONTRACTOR TO MAINTAIN UTILITY SERVICES DURING CONSTRUCTION, WITH MINIMAL INTERRUPTION.
6. CONTRACTOR TO BE RESPONSIBLE FOR THE REPAIR OF ANY DAMAGED CURB OR DRIVEWAYS DURING CONSTRUCTION.

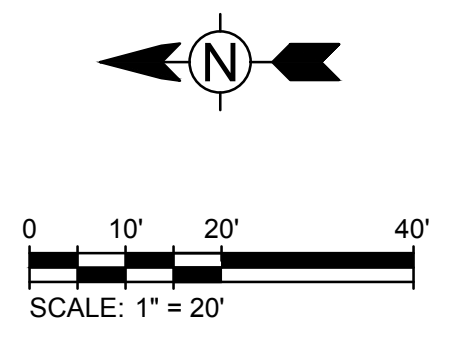
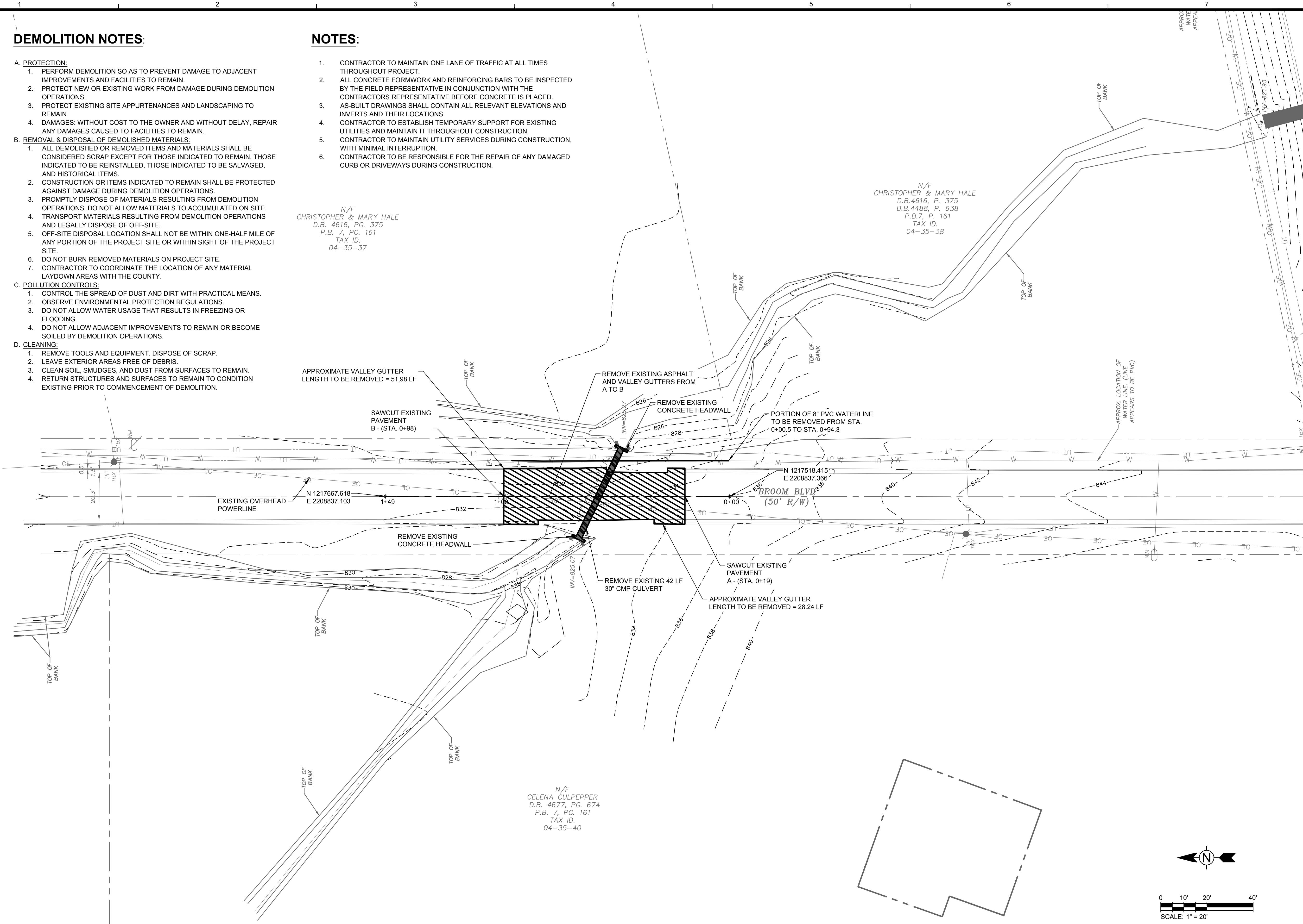
N/F  
CHRISTOPHER & MARY HALE  
D.B. 4616, PG. 375  
P.B. 7, PG. 161  
TAX ID.  
04-35-37

N/F  
CHRISTOPHER & MARY HALE  
D.B. 4616, P. 375  
D.B. 4488, P. 638  
P.B. 7, P. 161  
TAX ID.  
04-35-38

N/F  
CELENA CULPEPPER  
D.B. 4677, PG. 674  
P.B. 7, PG. 161  
TAX ID.  
04-35-40

T.B.M. BOLT  
N=1217844.09  
E=2208671.27  
ELEV=835.76

BM  
ELEV=835.76



**TETRA TECH**  
www.tetrattech.com  
1899 POWERS FERRY ROAD SE, SUITE 400  
ATLANTA, GEORGIA 30339  
TEL: (770) 860-0949 FAX: (770) 860-0950

REGISTERED PROFESSIONAL ENGINEER  
DAVID N. LAVERGNE  
No. PE040216  
6/18/18

GSWCC LEVEL II  
CERT. # 0000073529

MARK	DATE	DESCRIPTION	BY
0	04/27/18	ISSUED FOR CONSTRUCTION	MR
1	06/19/18	ADDENDUM #1	CG

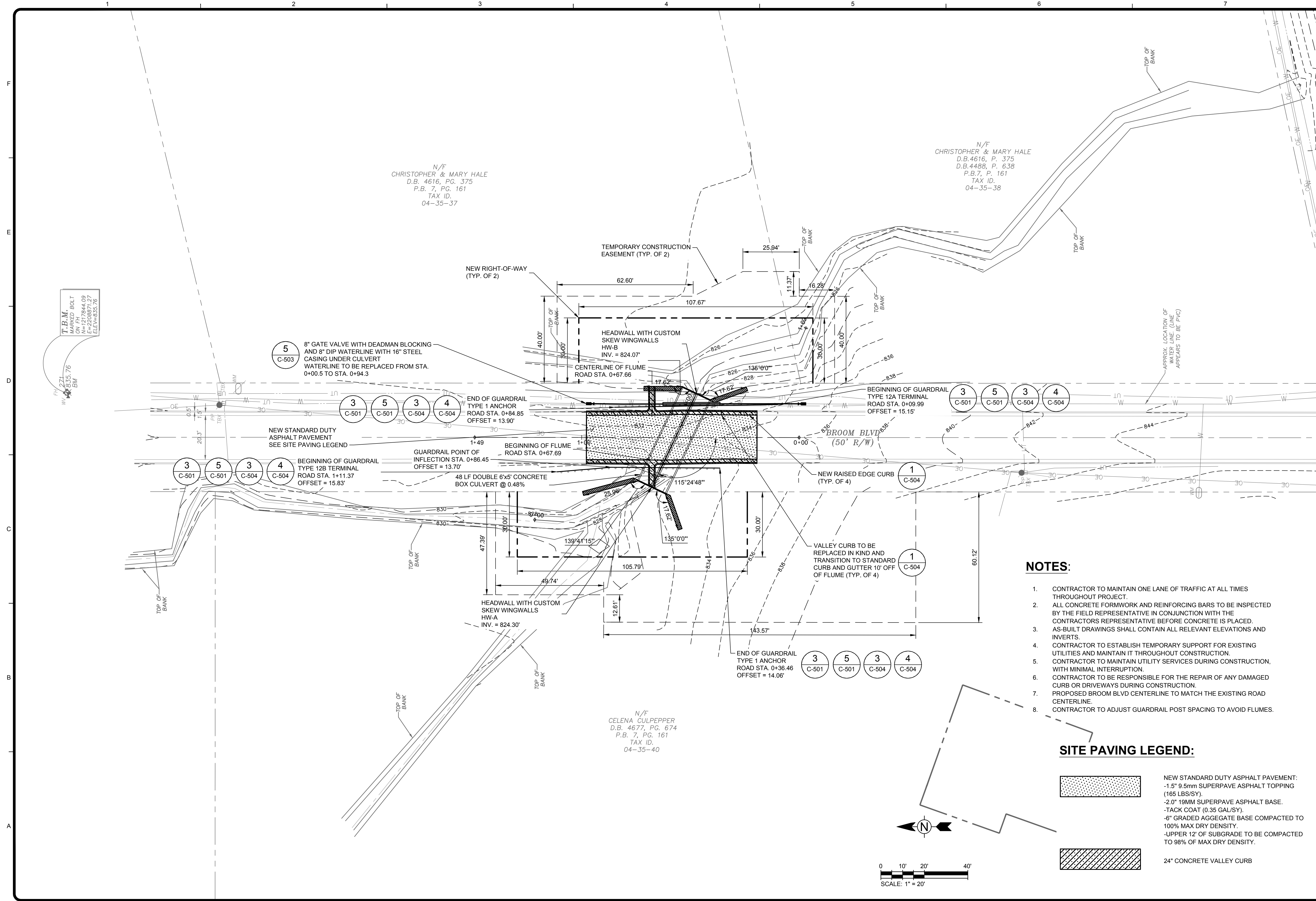
FAYETTE COUNTY  
BROOM BLVD CULVERT REPLACEMENT  
DEMOLITION PLAN

Project No.: 200-01297-17020  
Designed By: CG  
Drawn By: CG  
Checked By: DL

**C-102**

Bar Measures 1 inch

6/19/2018 9:34:01 AM - O:\PROJECTS\ATLANTA\TAI\TAI\101297\200-01297-17020\CAD\SHEETFILES\C-103.DWG - GULMIRE, CALEB

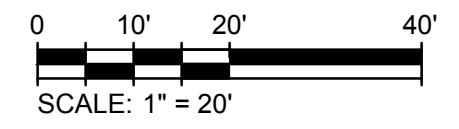


**NOTES:**

- CONTRACTOR TO MAINTAIN ONE LANE OF TRAFFIC AT ALL TIMES THROUGHOUT PROJECT.
- ALL CONCRETE FORMWORK AND REINFORCING BARS TO BE INSPECTED BY THE FIELD REPRESENTATIVE IN CONJUNCTION WITH THE CONTRACTORS REPRESENTATIVE BEFORE CONCRETE IS PLACED. AS-BUILT DRAWINGS SHALL CONTAIN ALL RELEVANT ELEVATIONS AND INVERTS.
- CONTRACTOR TO ESTABLISH TEMPORARY SUPPORT FOR EXISTING UTILITIES AND MAINTAIN IT THROUGHOUT CONSTRUCTION.
- CONTRACTOR TO MAINTAIN UTILITY SERVICES DURING CONSTRUCTION, WITH MINIMAL INTERRUPTION.
- CONTRACTOR TO BE RESPONSIBLE FOR THE REPAIR OF ANY DAMAGED CURB OR DRIVEWAYS DURING CONSTRUCTION.
- PROPOSED BROOM BLVD CENTERLINE TO MATCH THE EXISTING ROAD CENTERLINE.
- CONTRACTOR TO ADJUST GUARDRAIL POST SPACING TO AVOID FLUMES.

**SITE PAVING LEGEND:**

- NEW STANDARD DUTY ASPHALT PAVEMENT:  
-1.5" 9.5mm SUPERPAVE ASPHALT TOPPING (165 LBS/SY).  
-2.0" 19MM SUPERPAVE ASPHALT BASE.  
-TACK COAT (0.35 GAL/SY).  
-6" GRADED AGGREGATE BASE COMPACTED TO 100% MAX DRY DENSITY.  
-UPPER 12" OF SUBGRADE TO BE COMPACTED TO 98% OF MAX DRY DENSITY.
- 24" CONCRETE VALLEY CURB



N/F  
CHRISTOPHER & MARY HALE  
D.B. 4616, PG. 375  
P.B. 7, PG. 161  
TAX ID.  
04-35-37

N/F  
CHRISTOPHER & MARY HALE  
D.B. 4616, P. 375  
D.B. 4498, P. 638  
P.B. 7, P. 161  
TAX ID.  
04-35-38

N/F  
CELENA GULPEPPER  
D.B. 4677, PG. 674  
P.B. 7, PG. 161  
TAX ID.  
04-35-40

T.B.M.  
MARKED BOLT  
N=1217844.09  
E=2208671.27  
ELEV=835.76

**TETRA TECH**  
www.tetra-tech.com  
1899 POWERS FERRY ROAD SE, SUITE 400  
ATLANTA, GEORGIA 30339  
TEL: (770) 850-0949 FAX: (770) 850-0950

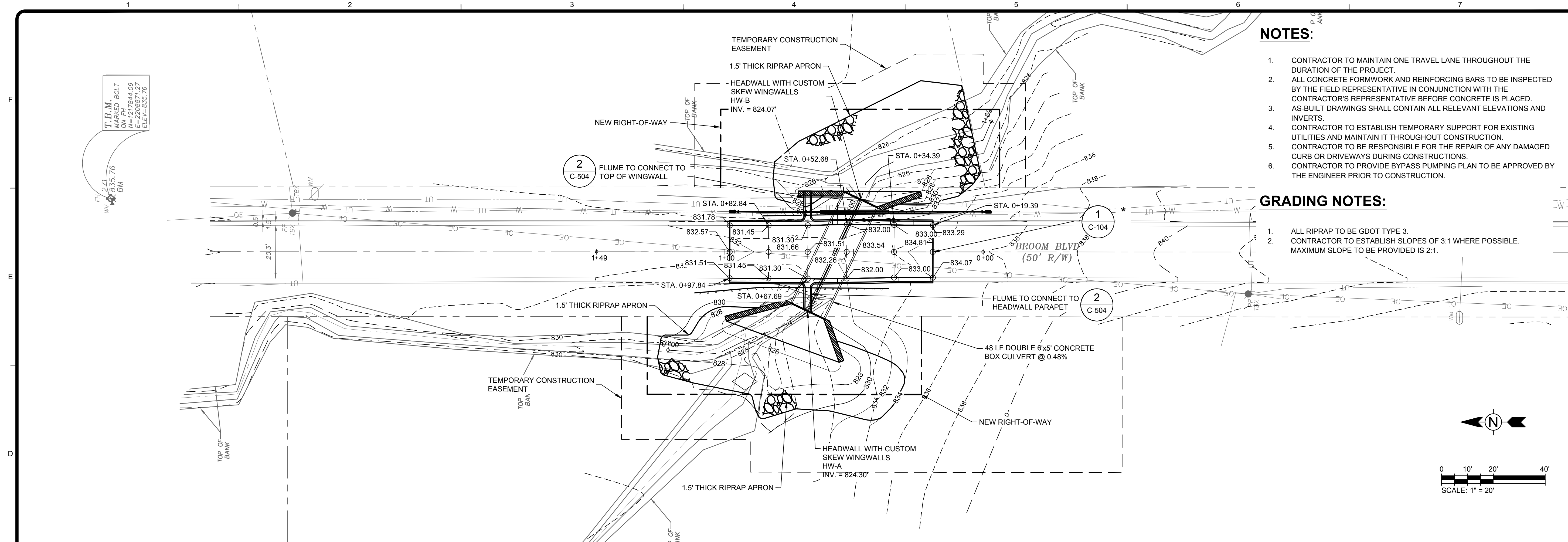
REGISTERED PROFESSIONAL ENGINEER  
DAVID N. LAVERGNE  
6/18/18  
GSWCC LEVEL II  
CERT. # 000073529

MARK	DATE	DESCRIPTION	BY
0	04/27/18	ISSUED FOR CONSTRUCTION	MR CG
1	06/19/18	ADDENDUM #1	CG

FAYETTE COUNTY  
BROOM BLVD CULVERT REPLACEMENT  
SITE PLAN  
Project No.: 200-01297-17020  
Designed By: CG  
Drawn By: CG  
Checked By: DL

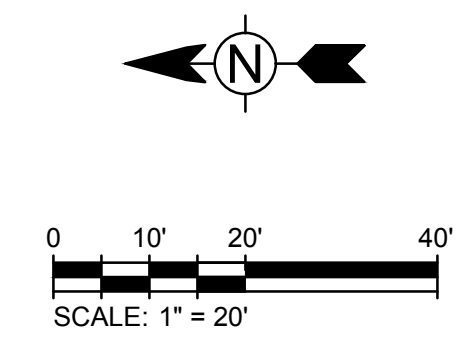
**C-103**

6/18/2018 2:15:59 PM - O:\PROJECTS\ATLANTA\17020\CAD\SHEETFILES\C-104.DWG - GULMIRE, CALEB

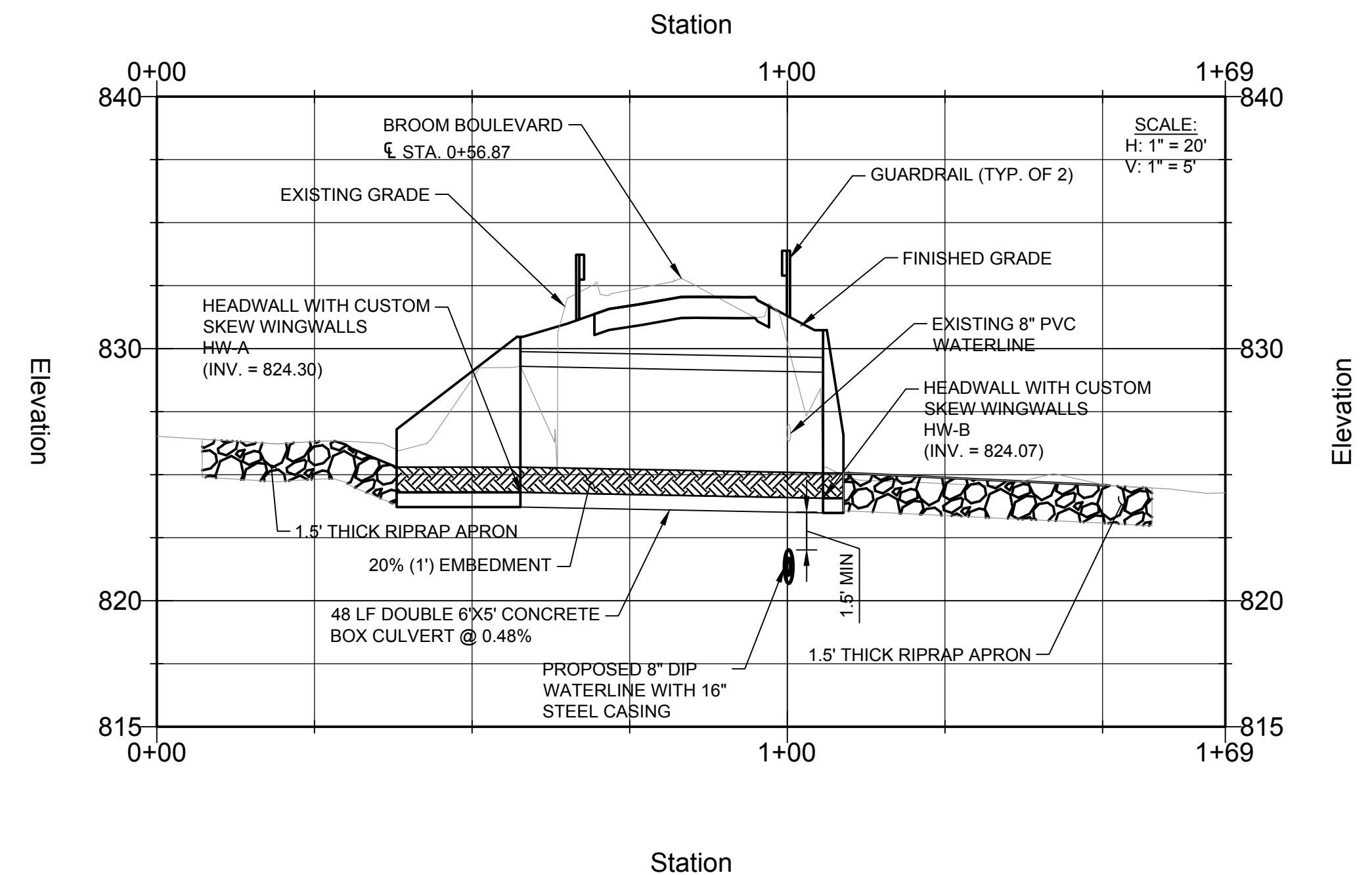


- NOTES:**
- CONTRACTOR TO MAINTAIN ONE TRAVEL LANE THROUGHOUT THE DURATION OF THE PROJECT.
  - ALL CONCRETE FORMWORK AND REINFORCING BARS TO BE INSPECTED BY THE FIELD REPRESENTATIVE IN CONJUNCTION WITH THE CONTRACTOR'S REPRESENTATIVE BEFORE CONCRETE IS PLACED.
  - AS-BUILT DRAWINGS SHALL CONTAIN ALL RELEVANT ELEVATIONS AND INVERTS.
  - CONTRACTOR TO ESTABLISH TEMPORARY SUPPORT FOR EXISTING UTILITIES AND MAINTAIN IT THROUGHOUT CONSTRUCTION.
  - CONTRACTOR TO BE RESPONSIBLE FOR THE REPAIR OF ANY DAMAGED CURB OR DRIVEWAYS DURING CONSTRUCTIONS.
  - CONTRACTOR TO PROVIDE BYPASS PUMPING PLAN TO BE APPROVED BY THE ENGINEER PRIOR TO CONSTRUCTION.

- GRADING NOTES:**
- ALL RIPRAP TO BE GDOT TYPE 3.
  - CONTRACTOR TO ESTABLISH SLOPES OF 3:1 WHERE POSSIBLE. MAXIMUM SLOPE TO BE PROVIDED IS 2:1.

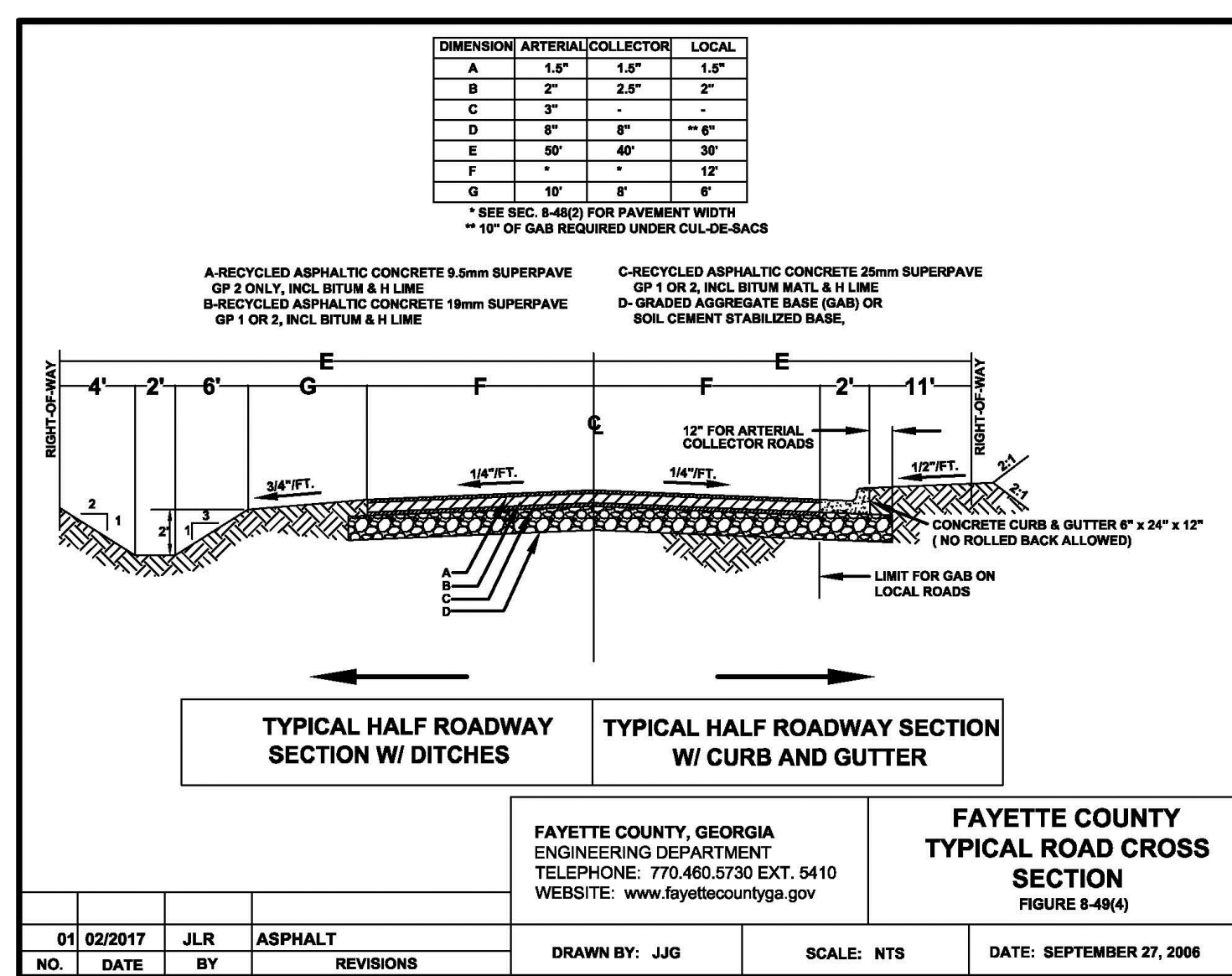


**BROOM BLVD CULVERT PROFILE**



STORM FREQUENCY	FLOW (CFS)	OUTLET VELOCITY (FPS)	DOWNSTREAM VELOCITY (FPS)
25-YEAR	206	8.0	6.5
50-YEAR	295	9.1	7.5
100-YEAR	393	10.0	8.4

DRAINAGE AREA = 205.1 ACRES  
STREAM SLOPE = 1.34%



**1 DETAIL**  
SCALE: N.T.S.

\* ROADWAY TO MATCH FAYETTE COUNTY TYPICAL CROSS SECTION FROM STA. 0+34.39 TO 0+82.84

**TETRA TECH**  
www.tetra-tech.com  
1899 POWERS FERRY ROAD SE, SUITE 400  
ATLANTA, GEORGIA 30339  
TEL: (770) 850-0949 FAX: (770) 850-0950

GEORGIA PROFESSIONAL ENGINEER  
DAVID N. LAVERGNE  
No. PE040218  
6/18/18  
GSWCC LEVEL II  
CERT. # 000073529

MARK	DATE	DESCRIPTION	BY	MR	CG
0	04/27/18	ISSUED FOR CONSTRUCTION			
1	06/18/18	ADDENDUM #1			

FAYETTE COUNTY  
BROOM BLVD CULVERT REPLACEMENT  
GRADING AND DRAINAGE PLAN

Project No.: 200-01297-17020  
Designed By: CG  
Drawn By: CG  
Checked By: DL

**C-104**

Bar Measures 1 inch

Copyright: Tetra Tech

6/18/2018 2:18:50 PM - O:\PROJECTS\ATLANTA\TAI\101297-17020\CAD\SHEETFILES\C-105.DWG - GULMIRE, CALEB

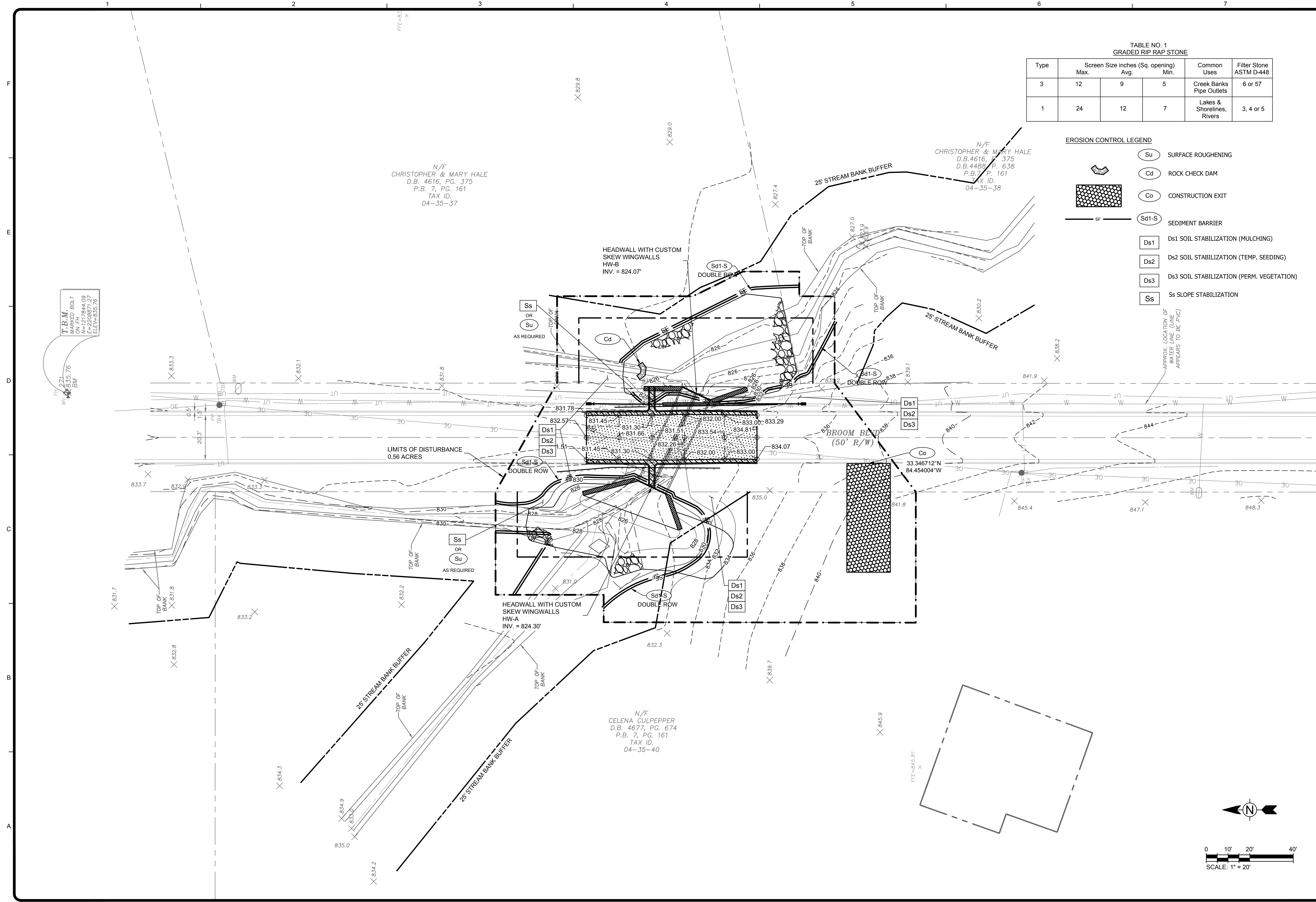


TABLE NO. 1  
GRADED RIP RAP STONE

Type	Screen Size inches (Sq. opening)			Common Uses	Filter Stone ASTM D-448
	Max.	Avg.	Min.		
3	12	9	5	Creek Banks Pipe Outlets	6 or 57
1	24	12	7	Lakes & Shorelines, Rivers	3, 4 or 5

- EROSION CONTROL LEGEND**
- Su SURFACE ROUGHENING
  - Cd ROCK CHECK DAM
  - Co CONSTRUCTION EXIT
  - Sd1-S SEDIMENT BARRIER
  - Ds1 Ds1 SOIL STABILIZATION (MULCHING)
  - Ds2 Ds2 SOIL STABILIZATION (TEMP. SEEDING)
  - Ds3 Ds3 SOIL STABILIZATION (PERM. VEGETATION)
  - Ss Ss SLOPE STABILIZATION
- APPROX. LOCATION OF WATER LINE (LINE APPEARS TO BE PVC)

**TETRA TECH**  
www.tetra-tech.com  
1899 POWERS FERRY ROAD SE, SUITE 400  
ATLANTA, GEORGIA 30339  
TEL: (770) 850-0949 FAX: (770) 850-0950

GEORGIA  
Professional Engineer  
DAVID N. LAVERGNE  
No. PE040218  
6/18/18

GSWCC LEVEL II  
CERT. # 0000073529

MARK	DATE	DESCRIPTION	BY
0	04/27/18	ISSUED FOR CONSTRUCTION	MR
1	06/18/18	ADDENDUM #1	CG

FAYETTE COUNTY  
BROOM BLVD CULVERT REPLACEMENT  
**EROSION AND SEDIMENTATION CONTROL PLAN**

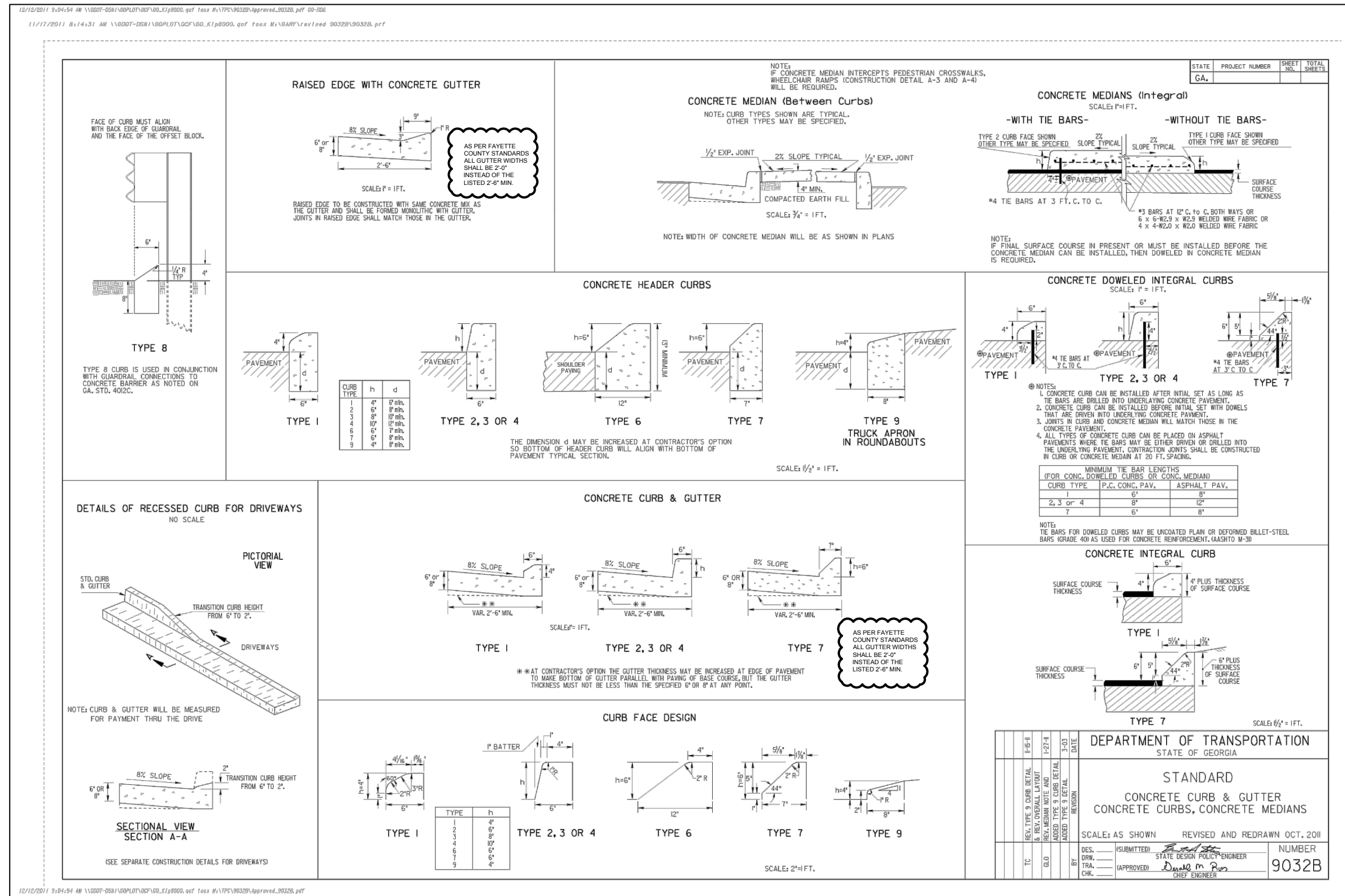
Project No.: 200-01297-17020  
Designed By: CG  
Drawn By: CG  
Checked By: DL

**C-105**

Bar Measures 1 inch

Copyright: Tetra Tech

6/18/2018 2:36:31 PM - C:\PROJECTS\ATLANTA\TAI\TAI\200-01297-17020\CAD\DETAILS\C-504 CONSTRUCTION DETAILS.DWG - GULMIRE, CALEB

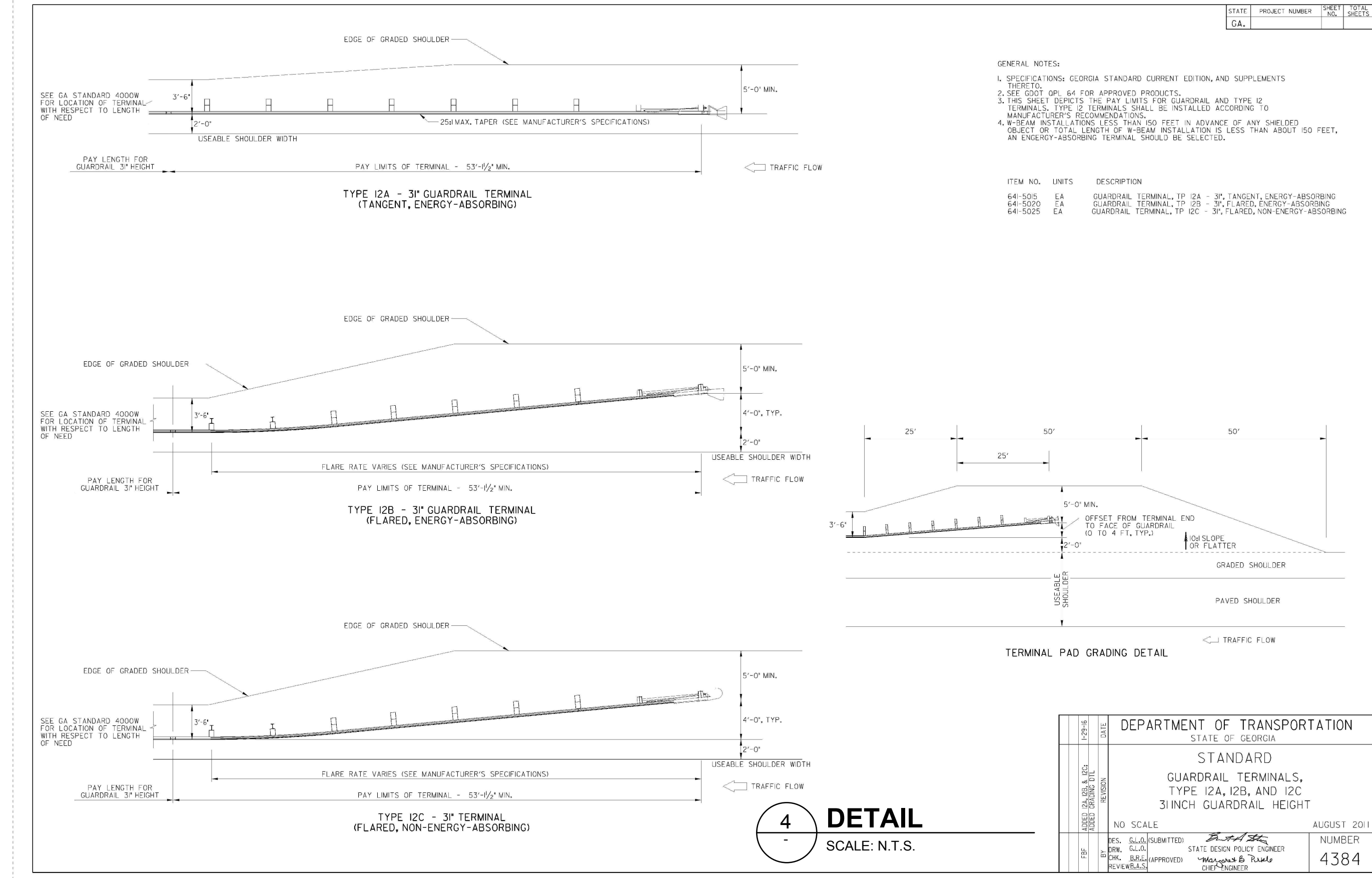
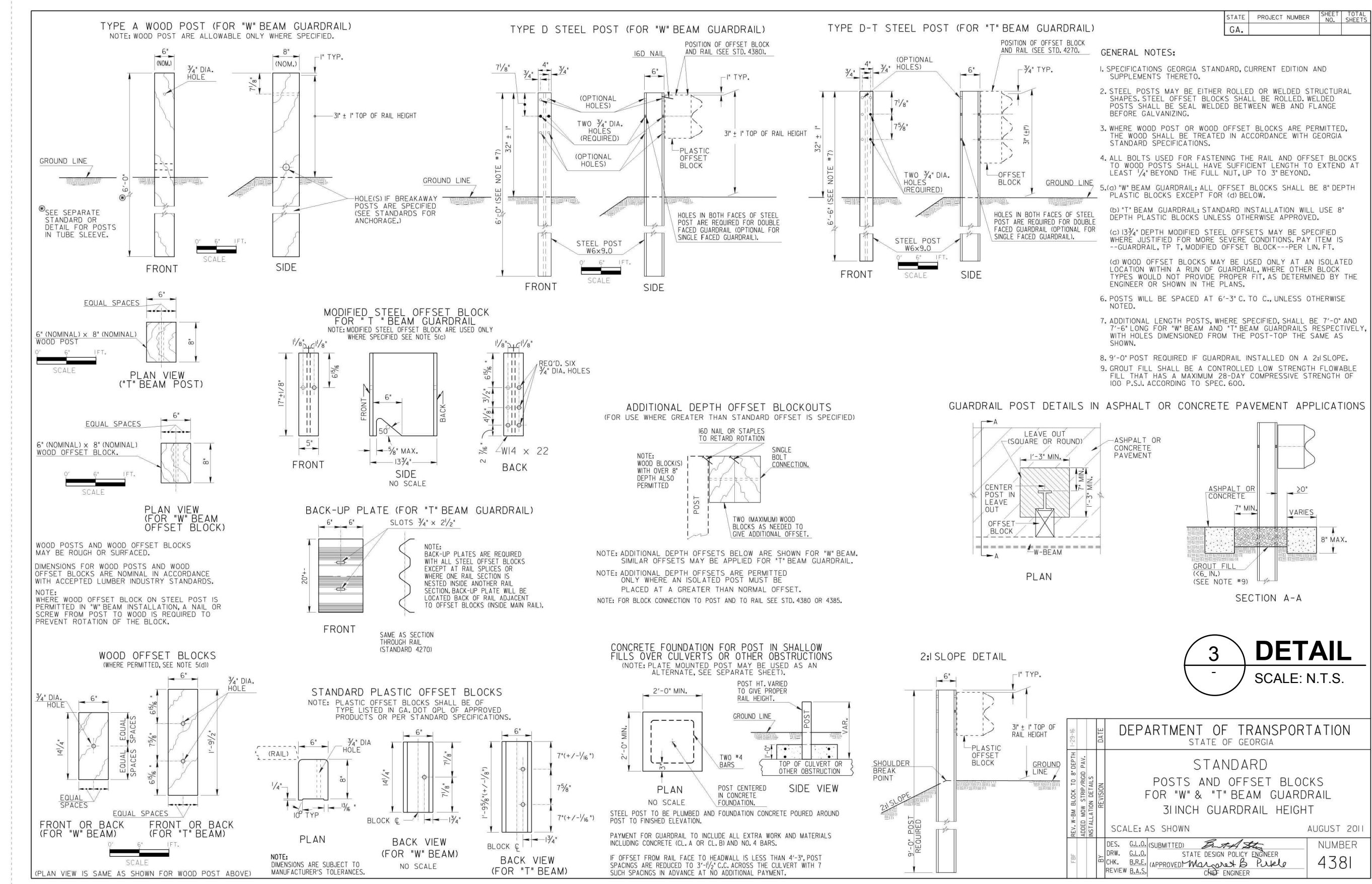


- NOTES:**
- FLUME SLOPE IS 27.6% AND FLUME LENGTH IS 13.22 LF FOR EAST SIDE OF ROAD
  - FLUME SLOPE IS 3.97% AND FLUME LENGTH IS 12.63 LF FOR WEST SIDE OF ROAD

**TETRA TECH**  
www.tetra-tech.com  
1899 POWERS FERRY ROAD SE, SUITE 400  
ATLANTA, GEORGIA 30339  
TEL: (770) 850-0949 FAX: (770) 850-0950

GEORGIA PROFESSIONAL ENGINEER  
DAVID N. LAVERGNE  
No. PE040218  
6/18/18

GSWCC LEVEL II  
CERT. # 0000073529



MARK	DATE	DESCRIPTION	BY	MR	CG
0	04/27/18	ISSUED FOR CONSTRUCTION			
1	06/18/18	ADDENDUM #1			

FAYETTE COUNTY  
BROOM BLVD CULVERT REPLACEMENT  
CONSTRUCTION DETAILS

Project No.: 200-01297-17020  
Designed By: CG  
Drawn By: CG  
Checked By: DL

DEPARTMENT OF TRANSPORTATION  
STATE OF GEORGIA  
STANDARD GUARDRAIL TERMINALS, TYPE 12A, 12B, AND 12C 3 INCH GUARDRAIL HEIGHT  
NO SCALE  
AUGUST 2011  
NUMBER 4384

**C-504**

Bar Measures 1 inch