

PRINTED

DATE	COMMENTS
07.26.2018	FOR PRICING & PERMIT

This drawing is property of K.A. Oldham Design, Inc and may not be reproduced or used without the Architect's written permission. © 2017



FAYETTE COUNTY TRAINING FACILITY RENOVATION

340 HEWELL ROAD JONESBORO, GEORGIA

Prepared for
FAYETTE CO.

COMMISSION NO:
1465.17

SHEET TITLE:
HVAC DETAILS AND SCHEDULES

SHEET NO:

M102

NOT ISSUED FOR CONSTRUCTION

SPLIT SYSTEM HEAT PUMP UNITS

SYMBOL	INDOOR UNIT								OUTDOOR UNIT				REMARKS				
	AIR FLOW DATA				COOLING DATA				HEATING DATA								
SUPPLY CFM	O.A. CFM	E.S.P. IN. WG	MAX. HP	TOTAL MBH	SENS. MBH	EAT DB	WB	REFRIG. HEAT AT 47°F AMB. TEMP. (BTUH)	ELEC. HEAT KW	MODEL	SYMBOL	AMBIENT AIR TEMP (COOLING)	AMBIENT AIR TEMP (HEATING)	SEER	HSPF	MODEL	
FCU-1	425	-	-	1/10	18.0	13.5	80	67	19,000	-	MITSUBISHI PKA-A18HA	HP-1	95°F	47°F	15.3	9.5	MITSUBISHI PUZ-A18NH3
FCU-2	1590	250	0.80	3/4	46.7	34.0	80	67	46,000	11.3	CARRIER FV4CNB006	HP-2	95°F	47°F	15.0	8.7	CARRIER 25HCC548
FCU-3	1120	300	0.80	1/2	34.4	25.6	80	67	34,800	7.5	CARRIER FV4CNF002	HP-3	95°F	47°F	15.0	8.7	CARRIER 25HCC536
FCU-4	1240	300	0.80	1/2	42.0	31.4	80	67	42,000	11.3	CARRIER FV4CNF005	HP-4	95°F	47°F	15.0	8.7	CARRIER 25HCC542
FCU-5	1400	250	0.80	3/4	46.7	34.0	80	67	46,000	11.3	CARRIER FV4CNB006	HP-5	95°F	47°F	15.0	8.7	CARRIER 25HCC548
FCU-6	1290	300	0.80	1/2	42.0	31.4	80	67	42,000	11.3	CARRIER FV4CNB005	HP-6	95°F	47°F	15.0	8.7	CARRIER 25HCC542
FCU-7	1170	300	0.80	1/2	34.4	25.6	80	67	34,800	7.5	CARRIER FV4CNF002	HP-7	95°F	47°F	15.0	8.7	CARRIER 25HCC536
FCU-8	1540	200	0.80	3/4	46.7	34.0	80	67	46,000	11.3	CARRIER FV4CNB006	HP-8	95°F	47°F	15.0	8.7	CARRIER 25HCC548
FCU-9	1760	300	0.80	3/4	57.6	43.5	80	67	57,700	11.3	CARRIER FV4CNB006	HP-9	95°F	47°F	15.0	8.5	CARRIER 25HCC560

1 PROVIDE SEVEN-DAY PROGRAMMABLE WALL THERMOSTAT WITH FAN ON/AUTO CONTROL. SET FAN TO RUN CONTINUOUS DURING OCCUPIED HOURS.

FANS

MARK	SERVICE	TYPE	CFM	ESP IN W.C.	MAX. RPM	MAX. H.P.	DRIVE	MAX. SONES	CONTROLLED BY	MODEL	ACCESSORIES
F-1	TOILET EXH	IN-LINE	450	0.50	1440	1/4	DIRECT	4.0	SEE NOTE 1	COOK GN-642	

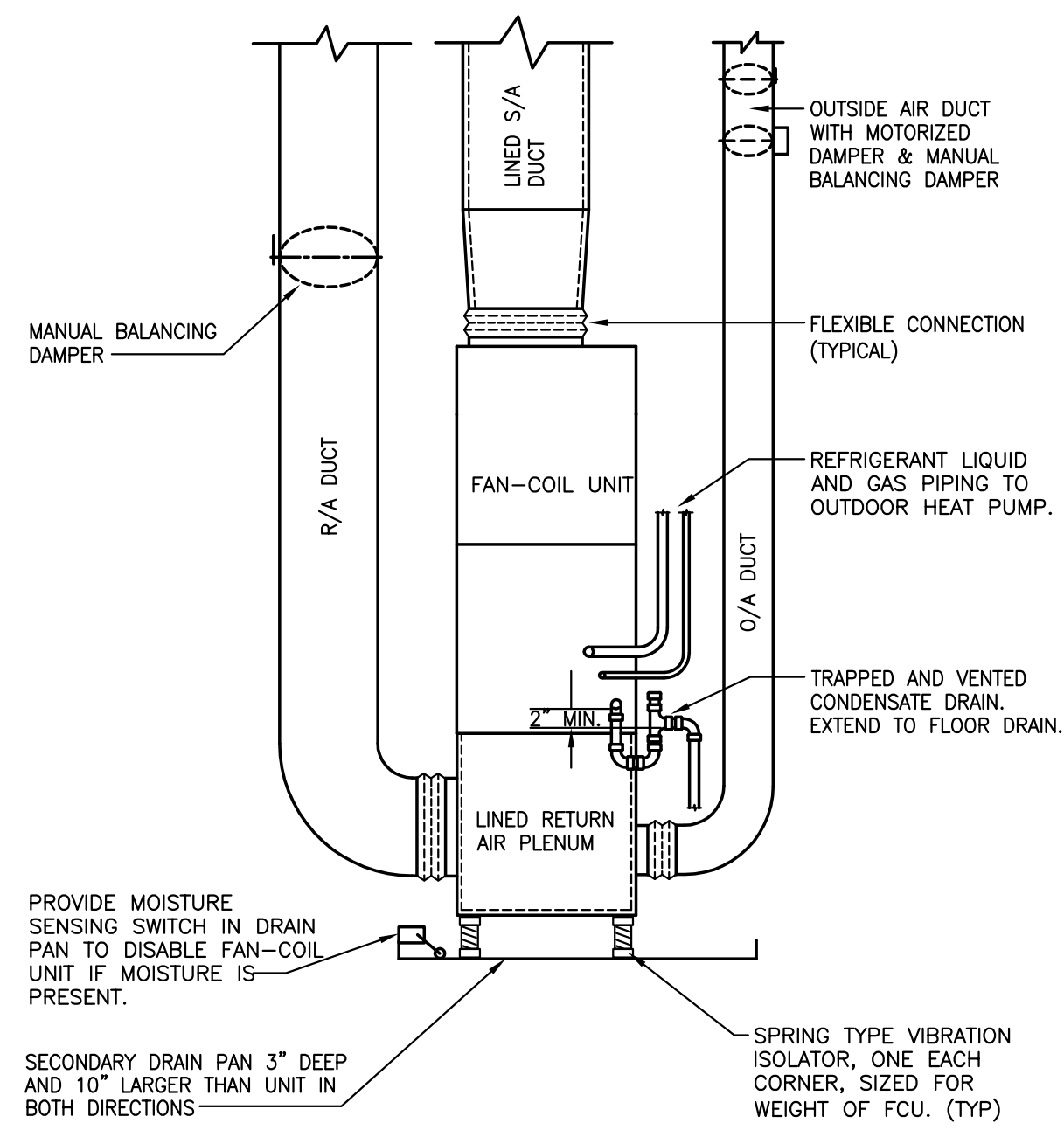
NOTE 1: INTERLOCK FAN WITH FCU-2 SO THAT FAN RUNS WHENEVER FCU-2 IS IN OCCUPIED MODE.

AIR DISTRIBUTION DEVICES

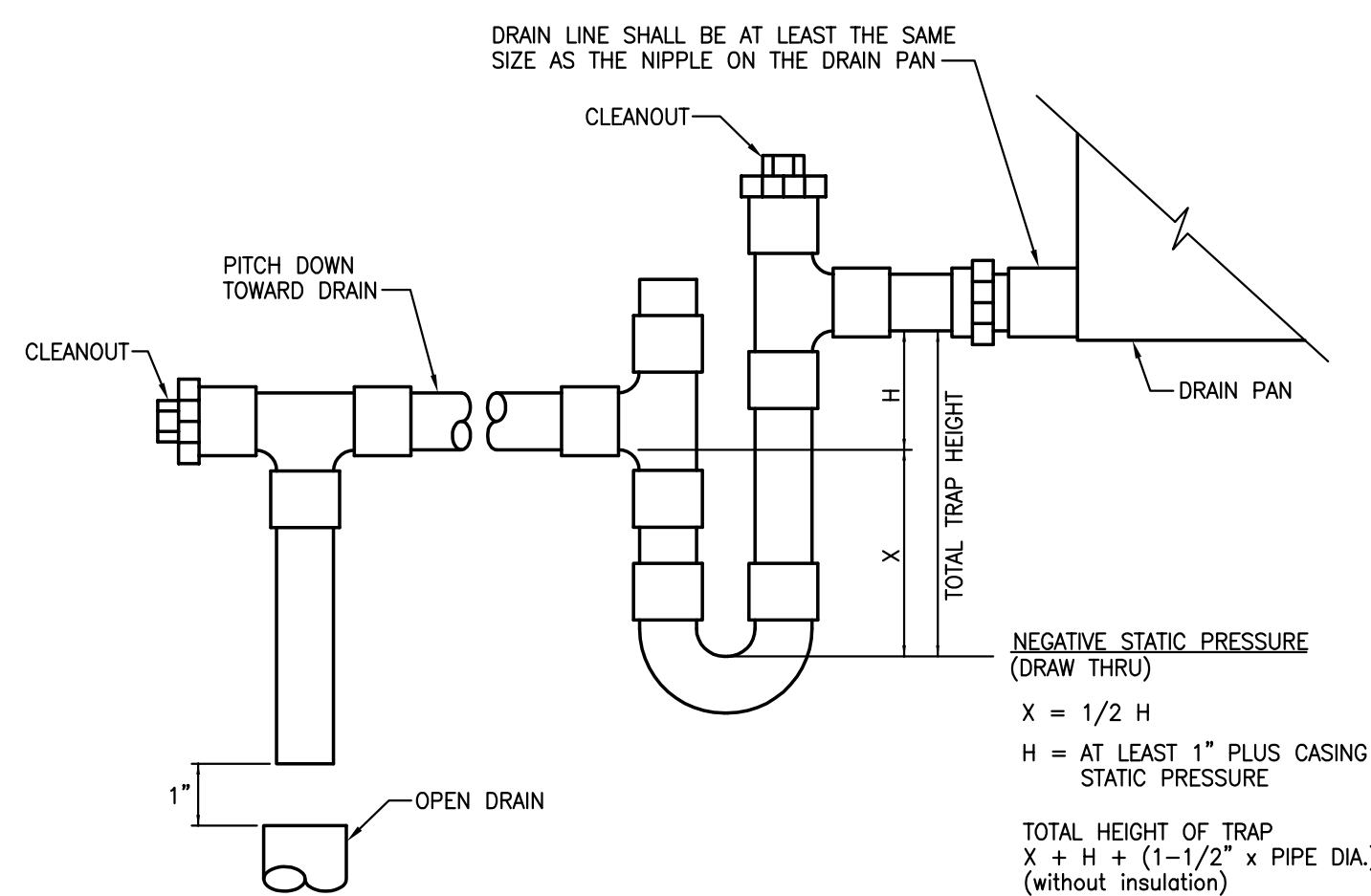
MARK	TYPE	NECK SIZE	OBD	FINISH	MODEL
A	LAY-IN CEILING DIFFUSER	6"Ø	YES	OFF-WHITE	PRICE SCD-31-3C, 24X24 LAY-IN
B	LAY-IN CEILING DIFFUSER	8"Ø	YES	OFF-WHITE	PRICE SCD-31-3C, 24X24 LAY-IN
C	LAY-IN CEILING DIFFUSER	10"Ø	YES	OFF-WHITE	PRICE SCD-31-3C, 24X24 LAY-IN
D	SURFACE MOUNT CEILING DIFFUSER	6"Ø	YES	OFF-WHITE	PRICE SCD-31-3C, 12X12 SURFACE MOUNT
E	SURFACE MOUNT CEILING DIFFUSER	8"Ø	YES	OFF-WHITE	PRICE SCD-31-3C, 12X12 SURFACE MOUNT
F	(NOT USED)				
G	SIDEWALL SUPPLY REGISTER	14X8	YES	OFF-WHITE	PRICE 520D/F/S
H	LAY-IN RETURN AIR GRILLE	8"Ø	NO	OFF-WHITE	PRICE PDDR, FRAME 3, 24X12 LAY-IN
J	LAY-IN RETURN AIR GRILLE	10"Ø	NO	OFF-WHITE	PRICE PDDR, FRAME 3, 24X24 LAY-IN
K	LAY-IN RETURN AIR GRILLE	12"Ø	NO	OFF-WHITE	PRICE PDDR, FRAME 3, 24X24 LAY-IN
L	LAY-IN RETURN AIR GRILLE	14"Ø	NO	OFF-WHITE	PRICE PDDR, FRAME 3, 24X12 LAY-IN
M	LAY-IN RETURN AIR GRILLE	16"Ø	NO	OFF-WHITE	PRICE PDDR, FRAME 3, 24X24 LAY-IN
N	LAY-IN RETURN AIR GRILLE	18"Ø	NO	OFF-WHITE	PRICE PDDR, FRAME 3, 24X24 LAY-IN
P	LAY-IN RETURN AIR GRILLE	22X22	NO	OFF-WHITE	PRICE PDDR, FRAME 3, 24X24 LAY-IN
Q	SIDEWALL RETURN AIR GRILLE	14X8	NO	OFF-WHITE	PRICE 530-F-L-A
R	CEILING EXHAUST REGISTER	6"Ø	YES	OFF-WHITE	PRICE 81D-F-A, SIZE 10X10
S	CEILING EXHAUST REGISTER	8"Ø	YES	OFF-WHITE	PRICE 81D-F-A, SIZE 12X12
T	SIDEWALL SUPPLY REGISTER	48X6	YES	OFF-WHITE	PRICE LBP-16B-1000, W/TYP C CONCEALED HANGER BRACKETS
U	SIDEWALL RETURN AIR GRILLE	48X6	NO	OFF-WHITE	PRICE LBP-16B-1000, W/TYP C CONCEALED HANGER BRACKETS

HVAC LEGEND

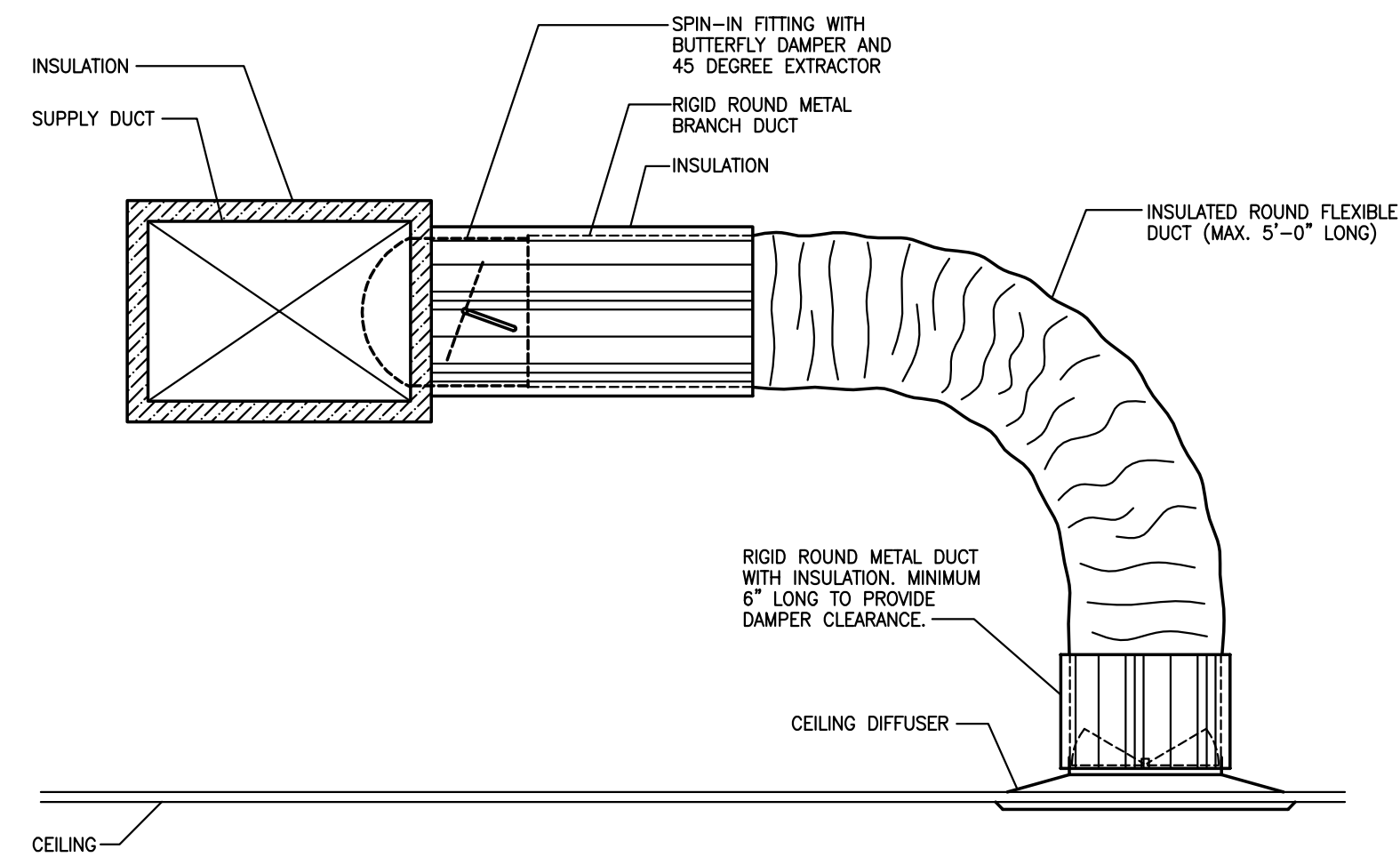
SUPPLY DIFFUSER
 RETURN OR EXHAUST GRILLE
 DUCT DIMENSION:
 A - HORIZONTAL
 B - VERTICAL
 DUCT RISE
 DUCT DROP
 DUCT WITH ACOUSTICAL LINER
 DUCT TURN DOWN
 DUCT TURN UP
 FIRE DAMPER
 90° ELBOW WITH TURNING VANES
 OPPOSED BLADE DAMPER (PLAN)
 THERMOSTAT
 EQUIPMENT DESIGNATION:
 X - EQUIPMENT
 Y - EQUIPMENT NUMBER
 AIR DISTRIBUTION DEVICE:
 X - LETTER DEVICE
 CFM - AIR QUANTITY IN FT³/MIN.



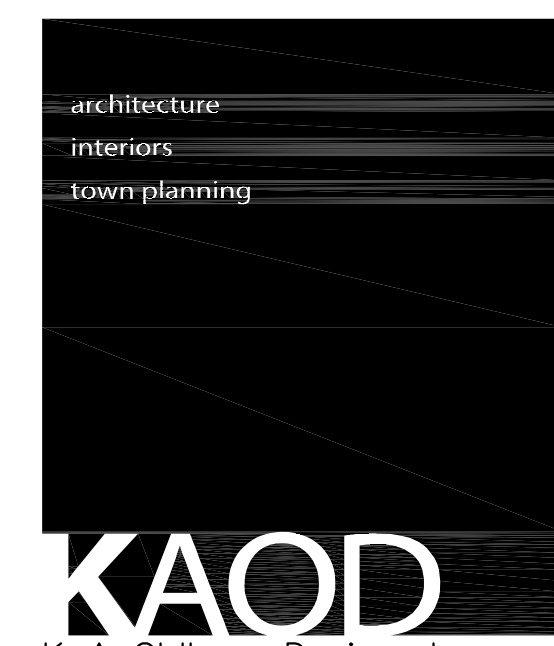
1 DETAIL - VERTICAL FAN-COIL UNIT
M102 NOT TO SCALE



2 CONDENSATE DRAIN TRAP DETAIL
M102 NOT TO SCALE



3 CEILING DIFFUSER RUNOUT DETAIL
M102 NOT TO SCALE



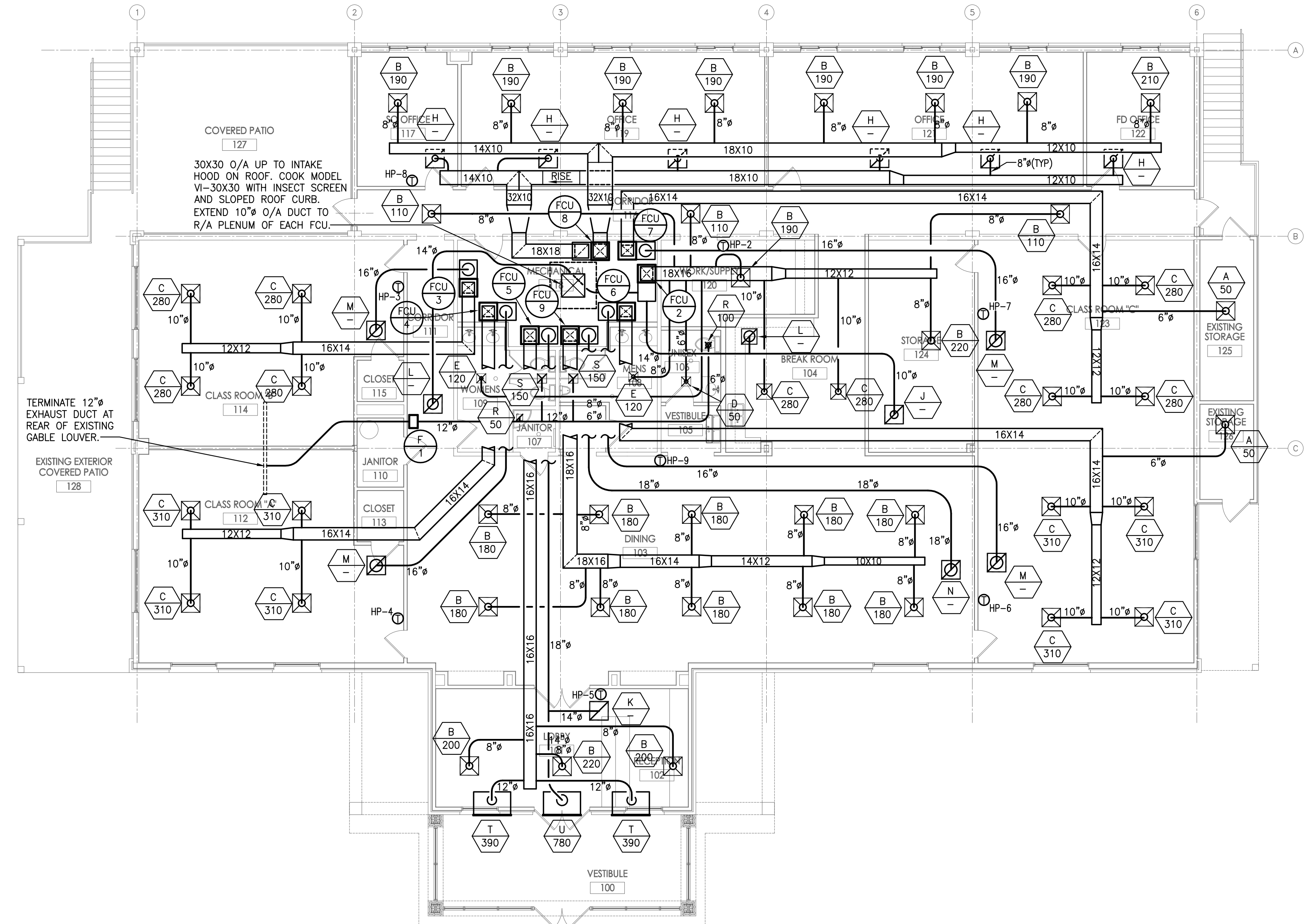
75 Jackson St. Suite 401
 Newnan, Georgia 30263
 Telephone: (770) 683-9170
 Fax: (770) 683-9171
 E-Mail: info@kaod.com
 Web Site: www.kaod.com

HVAC DEMOLITION NOTES

- REMOVE ALL EXISTING HVAC SYSTEMS INCLUDING EQUIPMENT, PIPING, DUCTWORK AND AIR DISTRIBUTION DEVICES.

DATE	COMMENTS
07.26.2018	FOR PRICING & PERMIT

This drawing is property of K.A. Oldham Design, Inc. and may not be reproduced or used without the Architect's written permission. © 2017



FAYETTE COUNTY TRAINING FACILITY RENOVATION

340 HEWELL ROAD
 JONESBORO, GEORGIA

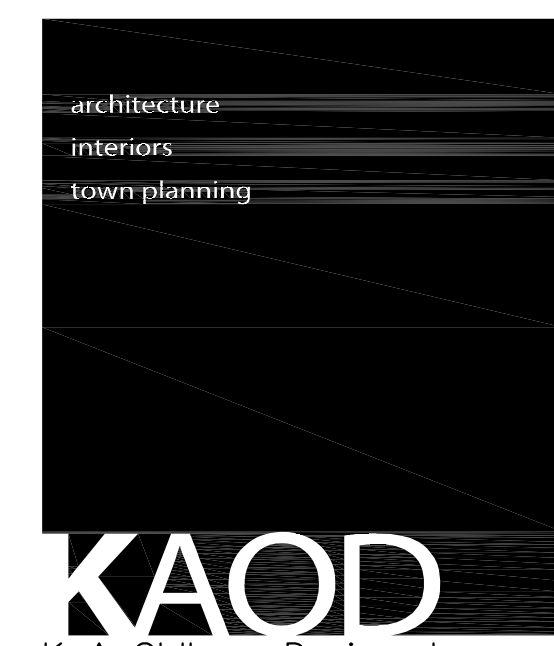
Prepared for
 FAYETTE CO.

COMMISSION NO:	1465.17
SHEET TITLE:	FIRST FLOOR PLAN - HVAC
SHEET NO:	M201

1
 M201 FIRST FLOOR PLAN - HVAC
 SCALE: 1/8" = 1'-0"



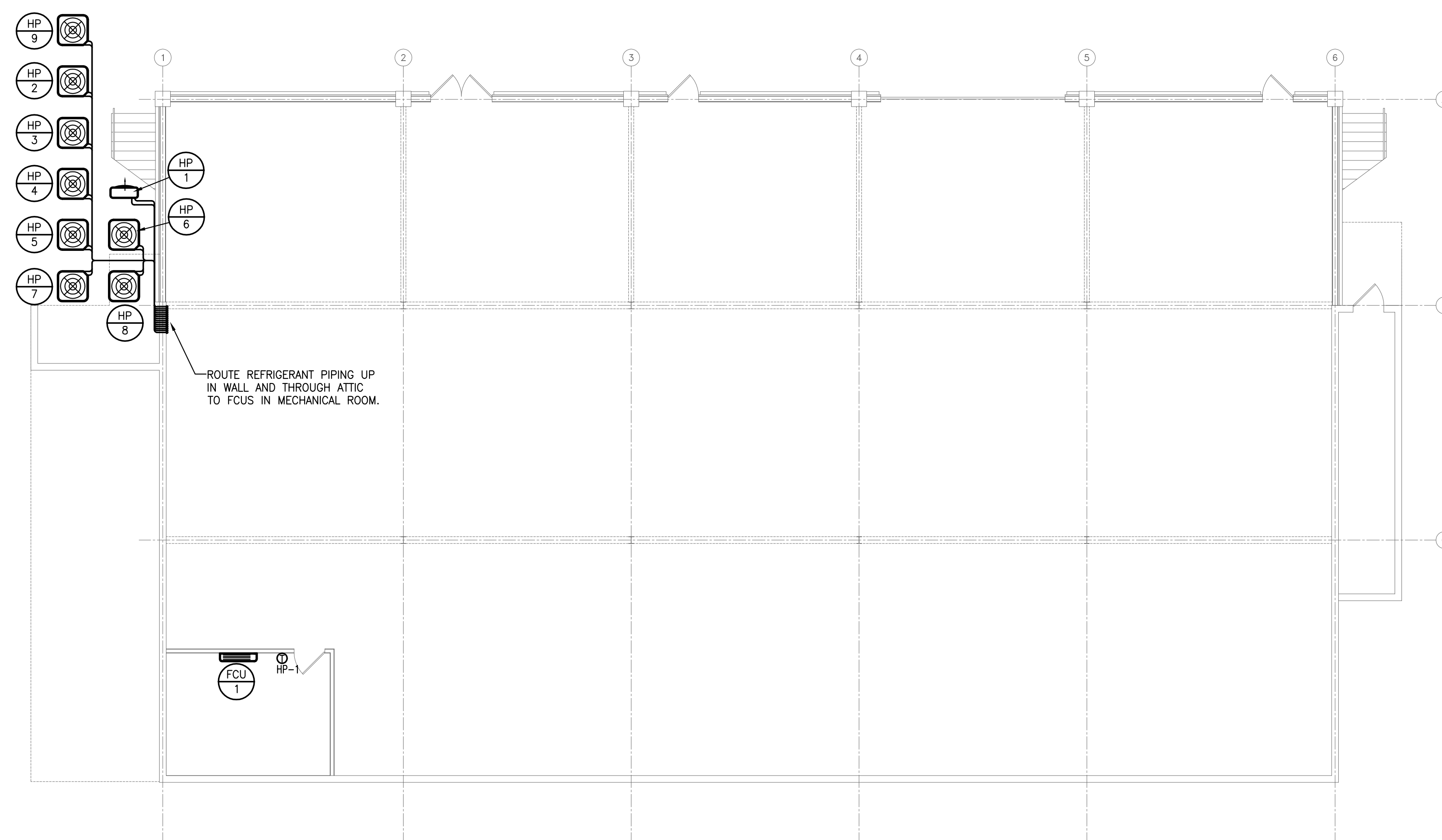
M201
 NOT ISSUED FOR CONSTRUCTION



75 Jackson St. Suite 401
 Newnan, Georgia 30263
 Telephone: (770) 683-9170
 Fax: (770) 683-9171
 E-Mail: info@kaod.com
 Web Site: www.kaod.com

HVAC DEMOLITION NOTES

- REMOVE ALL EXISTING HVAC SYSTEMS INCLUDING EQUIPMENT, PIPING, DUCTWORK AND AIR DISTRIBUTION DEVICES.



PRINTED	
DATE	COMMENTS
07.26.2018	FOR PRICING & PERMIT

This drawing is property of K.A. Oldham Design, Inc and may not be reproduced or used without the Architect's written permission. © 2017



FAYETTE
 COUNTY
 TRAINING
 FACILITY
 RENOVATION

340 HEWELL ROAD
 JONESBORO, GEORGIA

Prepared for
 FAYETTE CO.

1 BASEMENT PLAN - HVAC
 M202 SCALE: 1/8" = 1'-0"

COMMISSION NO:	1465.17
SHEET TITLE:	BASEMENT PLAN - HVAC
SHEET NO:	

M202

NOT ISSUED FOR CONSTRUCTION

PLUMBING SPECIFICATIONS

SCOPE:

THE WORK UNDER THIS SECTION SHALL BE TO PROVIDE A COMPLETE PLUMBING SYSTEM. ALL ITEMS OF WORK, OF COST AND EXPENSE OF ANY NATURE WHATSOEVER BELONGING WITH OR NECESSARY TO THE COMPLETION OF WORK CALLED FOR IN THIS SPECIFICATION OR IN THE CONTRACT DOCUMENTS ARE HEREBY SPECIFIED TO BE INCLUDED IN THIS CONTRACT.

ALL WORK SHALL COMPLY WITH THE REQUIREMENTS OF THE 2006 INTERNATIONAL PLUMBING CODE, AS WELL AS ANY LOCAL CODES AND ORDINANCES.

WARRANTY:

EQUIPMENT FURNISHED SHALL BE GUARANTEED FOR A MINIMUM PERIOD OF ONE (1) YEAR FROM DATE OF ACCEPTANCE.

SUBMITTALS:

ALL MATERIALS AND EQUIPMENT WHICH THE CONTRACTOR PROPOSES TO FURNISH SHALL BE SUBMITTED FOR REVIEW. DATA SHALL BE COMPLETE IN ALL RESPECTS AND SHALL REFERENCE, WHERE APPLICABLE, TO THE UNIT SYMBOL UTILIZED ON THE DRAWINGS AND SPECIFICATIONS.

PIPING:

ALL SANITARY WASTE AND VENT PIPING, NOT INSTALLED IN A RETURN AIR PLENUM, SHALL BE SCHEDULE 40 DWV PVC WITH DRAINAGE TYPE FITTINGS. WHERE INSTALLED IN THE CEILING RETURN AIR PLENUM BETWEEN THE FINISHED BASEMENT CEILING AND THE FIRST FLOOR SLAB, PIPING SHALL BE SERVICE WEIGHT CAST IRON WITH HUBLESS FITTINGS AND EXTRA HEAVY CLAMPS.

DOMESTIC WATER PIPING INSTALLED ABOVE GRADE SHALL BE TYPE L COPPER TUBING WITH WROUGHT COPPER SWEAT FITTINGS AND LEAD-FREE SOLDER JOINTS. PIPING INSTALLED BELOW GRADE SHALL BE TYPE K COPPER, INSTALLED WITHOUT ANY JOINTS BELOW THE FLOOR SLAB.

VALVES:

VALVES FOR DOMESTIC WATER SYSTEM: GATE VALVES SHALL HAVE BRONZE BODY, RISING STEM, SOLID WEDGE, THREADED BONNET, AND SOLDER ENDS FOR 125# SWP. WHERE GATE 2" AND SMALLER ARE SPECIFIED, QUARTER-TURN FULL PORT BALL VALVES MAY BE SUBSTITUTED.

WATER PRESSURE REDUCING VALVE:

PROVIDE IN THE COLD WATER SERVICE TO THE BUILDING. EACH VALVE SHALL HAVE CAPACITIES AND CHARACTERISTICS AS SHOWN ON DRAWINGS. EACH PRV STATION SHALL BE PROVIDED WITH A STRAINER IN THE INLET OF EACH VALVE AND UNIONS ON BOTH SIDES. PROVIDE A 3-1/2" 0-200 PSIG DIAL PRESSURE GAUGE AT THE INLET AND OUTLET OF EACH VALVE.

BACK FLOW PREVENTER:

BACK FLOW PREVENTERS SHALL CONSIST OF TWO INDEPENDENTLY ACTING INTERNALLY FORCE LOADED CHECK VALVES; INCLUDING GATE VALVES AND TEST COCKS, WITH AN INTERMEDIATE REDUCED PRESSURE ZONE. DRAIN LINE FROM UNIT SHALL BE DWS COPPER RUN FULL SIZE TO EXTERIOR OF BUILDING.

CLEANOUTS:

PROVIDE CLEANOUTS IN SOIL AND WASTE LINES AS SHOWN, AS REQUIRED BY THE GOVERNING CODE, AT THE BOTTOM OF EACH EXPOSED FIXTURE TRAP WHICH IS NOT INTEGRAL WITH THE FIXTURE, AT THE END OF EACH BRANCH DRAINAGE LINE, AT EACH CHANGE OF HORIZONTAL DIRECTION GREATER THAN 45 DEGREES, AT THE FOOT OF EACH SOIL AND RAINWATER STACK, AND IN HORIZONTAL DRAIN LINES AT INTERVALS OF NOT MORE THAN 75'.

FLOOR DRAINS:

FLOOR DRAINS SHALL BE EQUAL TO JOSAM MODEL 30000-A. EACH FLOOR DRAIN SHALL HAVE A TRAP PRIMER.

TRAPS:

PROVIDE TRAPS FOR ALL FIXTURES AND FLOOR DRAINS, EXCEPT AS NOTED OTHERWISE. SET TRAPS TRUE AND LEVEL. PROVIDE EXPOSED TRAPS WITH BRASS CLEANING SCREWS.

INSULATION:

PIPE INSULATION SHALL BE ONE-PIECE FIBROUS GLASS SECTIONAL PIPE INSULATION WITH FACTORY APPLIED GLASS REINFORCED ALUMINUM FOIL AND WHITE KRAFT PAPER FLAME RETARDANT VAPOR BARRIER JACKET. LONGITUDINAL JACKET LAPS AND BUTT STRIPS SHALL BE SELF-SEALING. INSULATE ALL DOMESTIC WATER PIPING WITH MINIMUM 1" THICK INSULATION.

PLUMBING FIXTURES:

ALL FIXTURES SHALL BE COMMERCIAL GRADE VITREOUS CHINA, ENAMELED CAST IRON, OR STAINLESS STEEL AS INDICATED. FOR EACH FIXTURE, PROVIDE CHROME PLATED BRASS STOP VALVES ON BOTH COLD AND HOT WATER SUPPLIES, WITH STAINLESS STEEL BRAIDED RUBBER SUPPLY HOSES FROM THE STOP VALVES TO THE FIXTURES. EACH SINK AND LAVATORY SHALL ALSO BE PROVIDED WITH A 17 GAUGE, CHROME-PLATED BRASS P-TRAP, WITH CLEANOUT PLUG. ALL FAUCETS SHALL BE CHROME PLATED BRASS.

FIXTURES SHALL BE AS FOLLOWS:

F1 - WATER CLOSET (ACCESSIBLE): FLOOR MOUNTED, TANK TYPE, ELONGATED WHITE VITREOUS CHINA, 16.5" HIGH RIM, 1.28 GPF PRESSURE ASSISTED FLUSH, OPEN FRONT SEAT, ADA COMPLIANT. AMERICAN STANDARD, KOHLER, ELJER OR CRANE.

F2 - WATER CLOSET: FLOOR MOUNTED, TANK TYPE, ELONGATED WHITE VITREOUS CHINA, 15" HIGH RIM, 1.28 GPF PRESSURE ASSISTED FLUSH, OPEN FRONT SEAT. AMERICAN STANDARD, KOHLER, ELJER OR CRANE.

F3 - URINAL (ACCESSIBLE): WALL MOUNTED, WHITE VITREOUS CHINA, 14" LIP PROJECTION, 0.25 GPF SENSOR OPERATED FLUSH VALVE, ADA COMPLIANT. AMERICAN STANDARD, KOHLER, ELJER OR CRANE. FLUSH VALVE SHALL BE BATTERY POWERED, SLOAN OPTIMA PLUS, OR EQUAL ZURN.

F4 - (NOT USED)

F5 - LAVATORY (ACCESSIBLE): WHITE VITREOUS CHINA, OVAL SELF-RIMMING, COUNTERTOP TYPE, AMERICAN STANDARD, KOHLER, ELJER OR CRANE, ADA COMPLIANT. FAUCET SHALL BE CHROME PLATED BRASS, SENSOR OPERATED, WITH STANDARD SPOUT, 0.5 GPM AERATOR AND GRID DRAIN, AMERICAN STANDARD, CHICAGO, KOHLER OR MOEN. FAUCET SHALL BE BATTERY POWERED, SLOAN OPTIMA PLUS, OR EQUAL ZURN.

F6 - (NOT USED)

F7 - (NOT USED)

F8 - (NOT USED)

F9 - MOP RECEPTOR: ENAMELED CAST IRON, RADIUS CORNER STYLE, WITH STAINLESS STEEL RIM GUARD, GRID DRAIN AND WALL MOUNTED FAUCET. FAUCET SHALL BE CHROME PLATED BRASS, WITH INTEGRAL STOPS, VACUUM BREAKER, GLADE HANDLES, HOSE THREADS, BUCKET HOOK AND ANGLE WALL BRACE. AMERICAN STANDARD, KOHLER, ELJER, CRANE, CHICAGO OR MOEN. MOUNT FAUCET AT 3'-0" AFF.

F10 - TWO COMPARTMENT SINK (ACCESSIBLE): MINIMUM 18 GAUGE STAINLESS STEEL SINK WITH TWO 13.5"x16"x6.5" DEEP BOWLS, SOUND UNDERCOAT, SINGLE LEVER FAUCET WITH SWIVEL SPOUT, DRAIN WITH REMOVABLE CRUMB CUP. ADA COMPLIANT. ELKAY, JUST, MOEN OR EQUAL.

F11 - DRINKING FOUNTAIN (ACCESSIBLE): WALL MOUNTED, BI-LEVEL REFRIGERATED DRINKING FOUNTAIN WITH FRONT AND SIDE TOUCH PADS, 8 GPF COOLING CAPACITY, ADA COMPLIANT. HALSEY TAYLOR MODEL HACFB5BL-Q OR EQUAL.

WATER HEATER:

WATER HEATER SHALL BE ELECTRIC, STORAGE TYPE, ENERGY EFFICIENT, COMPLYING WITH ASHRAE STANDARD 90.1, WITH MANUAL DRAIN VALVE AND ASME P&T RELIEF VALVE. HEATER SHALL BE PIPED AS SHOWN IN DETAIL 1/P101. CAPACITIES SHALL BE AS SCHEDULED ON THE DRAWINGS. HEATER SHALL BE A.O. SMITH, AS SCHEDULED, OR EQUAL STATE, OR RHEEM.

PLUMBING FIXTURE SCHEDULE

MARK	FIXTURE	NOTES	RIM HEIGHT	COLD WATER		HOT WATER		SOIL/WASTE	
				BRANCH	CONN.	BRANCH	CONN.	BRANCH	CONN.
F1	WATER CLOSET (ACCESSIBLE)	1, 2, 3	16.5"	1/2"	1/2"	-	-	4"	4"
F2	WATER CLOSET	1, 3	15"	1/2"	1/2"	-	-	4"	4"
F3	URINAL (ACCESSIBLE)	2, 4, 5	17"	1"	3/4"	-	-	2"	1-1/2"
F4	(NOT USED)								
F5	LAVATORY (ACCESSIBLE)	2, 6, 7, 8	34"	1/2"	1/2"	1/2"	1/2"	2"	1-1/4"
F6	(NOT USED)								
F7	(NOT USED)								
F8	(NOT USED)								
F9	MOP RECEPTOR	3	12"	1/2"	1/2"	1/2"	1/2"	3"	3"
F10	SINGLE COMPARTMENT SINK (ACCESSIBLE)	2, 8, 12	34"	1/2"	1/2"	1/2"	1/2"	2"	1-1/2"
F11	BI-LEVEL DRINKING FOUNTAIN (ACCESSIBLE)	2, 5	34"/40"	1/2"	3/8"	-	-	2"	1-1/4"
①	1.28 GPF TANK TYPE	⑤	WALL MOUNTED FIXTURE	⑨	PRESSURE BALANCED SHOWER VALVE				
②	HANDICAP ACCESSIBLE FIXTURE	⑥	SINGLE LEVER FAUCET WITH STANDARD SPOUT	⑩	WALL MOUNTED SHOWER HEAD				
③	FLOOR MOUNTED FIXTURE	⑦	0.5 GPM TAMPER-PROOF AERATOR	⑪	HAND-HELD SHOWER HEAD W/SELECTOR VALVE				
④	0.25 GPF SENSOR OPERATED FLUSH VALVE	⑧	COUNTERTOP FIXTURE	⑫	SINGLE LEVER FAUCET WITH SWIVEL SPOUT				

WATER HEATER SCHEDULE

SYMBOL	HEATER SERVICE	HEATER TYPE	HEAT INPUT	STORAGE CAPACITY	RECOVERY RATE (GPH @ 60°F RISE)	DISCHARGE TEMP (°F)	MANUFACTURER & MODEL	REMARKS
WH-1	DOMESTIC HOT WATER	ELECTRIC STORAGE	12.0 KW	80 GAL	81.7	110	A. O. SMITH DRE-80-12	

PLUMBING LEGEND

SYMBOL	ABBREVIATION	DESCRIPTION
---	S,W	SOIL OR WASTE PIPE
----	V	VENT PIPE
-----	CW	COLD WATER PIPE
-----	HW	HOT WATER PIPE
-----	HWC	HOT WATER CIRC. PIPE
○	FS	FLOOR SINK
⊗	FD	FLOOR DRAIN
○	FCD	FLOOR CLEANOUT
⊗	COTG	CLEANOUT TO GRADE
✕	GV	GATE VALVE
↕	CKV	CHECK VALVE
⊥	STR	STRAINER
∩	U	UNION
⊗	-	CONNECT TO EXISTING
⊗	AFF	ABOVE FINISHED FLOOR
⊗	A/C	ABOVE CEILING
⊗	(BF)	BARRIER FREE
⊗	B/F	BELOW FLOOR
⊗	B/G	BELOW GRADE
⊗	F	PLUMBING FIXTURE
⊗	VTR	VENT THRU ROOF

architecture
interiors
town planning

KAOD

K A Oldham Design, Inc

75 Jackson St. Suite 401
Newnan, Georgia 30263
Telephone: (770) 683-9170
Fax: (770) 683-9171
E-Mail: info@kaod.com
Web Site: www.kaod.com

PRINTED

DATE	COMMENTS
07.26.2018	FOR PRICING & PERMIT

This drawing is property of K.A. Oldham Design, Inc and may not be reproduced or used without the Architect's written permission. © 2017



FAYETTE COUNTY TRAINING FACILITY RENOVATION

340 HEWELL ROAD
JONESBORO, GEORGIA

Prepared for
FAYETTE CO.

COMMISSION NO:
1465.17

SHEET TITLE:
PLUMBING DETAILS, SCHEDULES AND SPECIFICATIONS

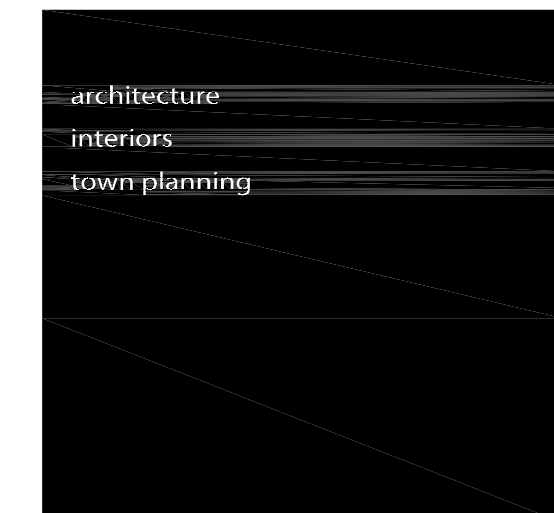
SHEET NO:

P101

NOT ISSUED FOR CONSTRUCTION

1
P101 NOT TO SCALE
DETAIL - WATER HEATER

2
P101 NOT TO SCALE
SANITARY PIPING RISER DIAGRAM

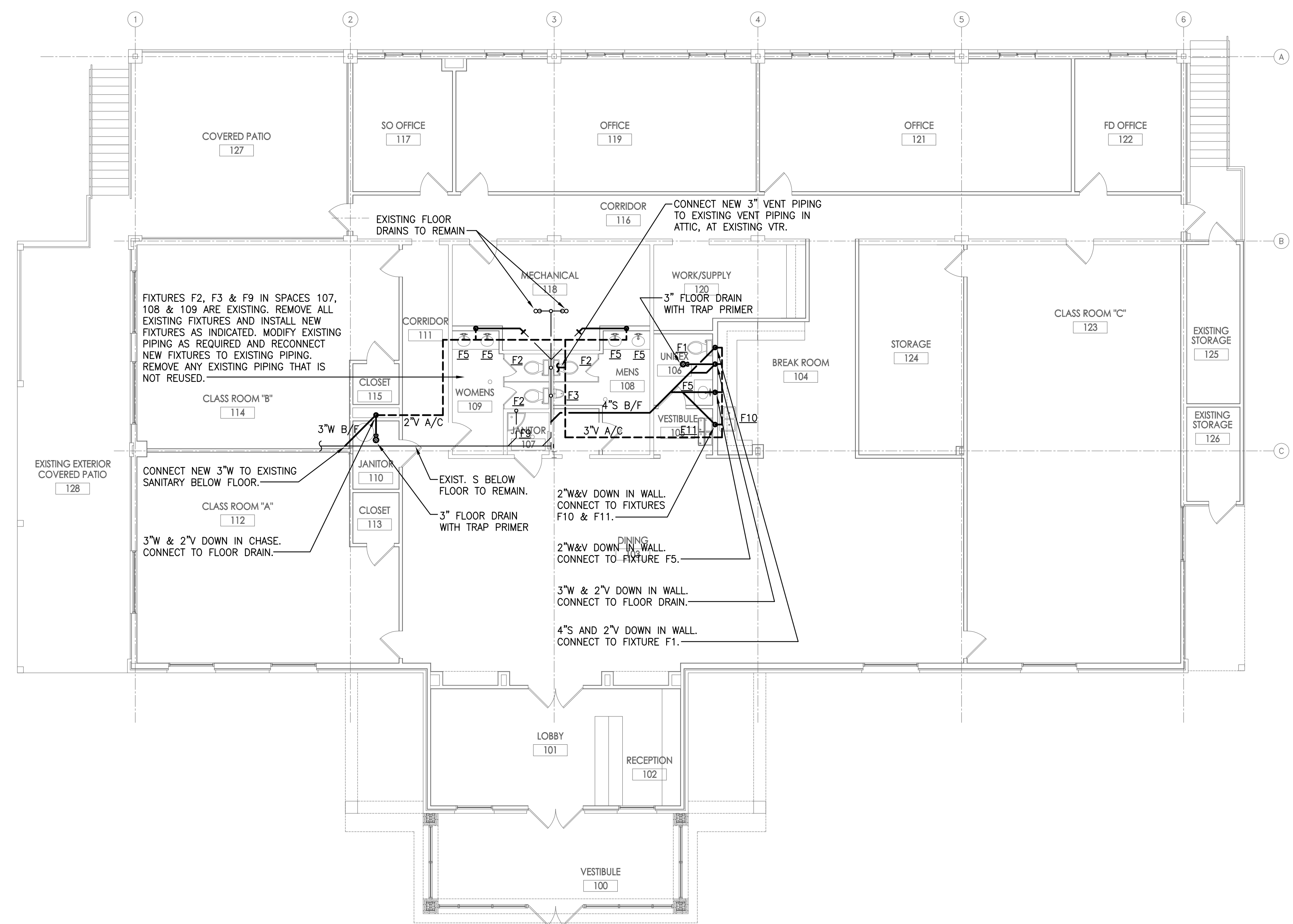


architecture
interiors
town planning

KAOD
K A Oldham Design, Inc
75 Jackson St. Suite 401
Newnan, Georgia 30263
Telephone: (770) 683-9170
Fax: (770) 683-9171
E-Mail: info@kaod.com
Web Site: www.kaod.com

DATE	COMMENTS
07.26.2018	FOR PRICING & PERMIT

This drawing is property of K.A. Oldham Design, Inc and may not be reproduced or used without the Architect's written permission. © 2017



1 FIRST FLOOR PLAN - SANITARY PIPING
P201 SCALE: 1/8" = 1'-0"



FAYETTE COUNTY TRAINING FACILITY RENOVATION

340 HEWELL ROAD JONESBORO, GEORGIA

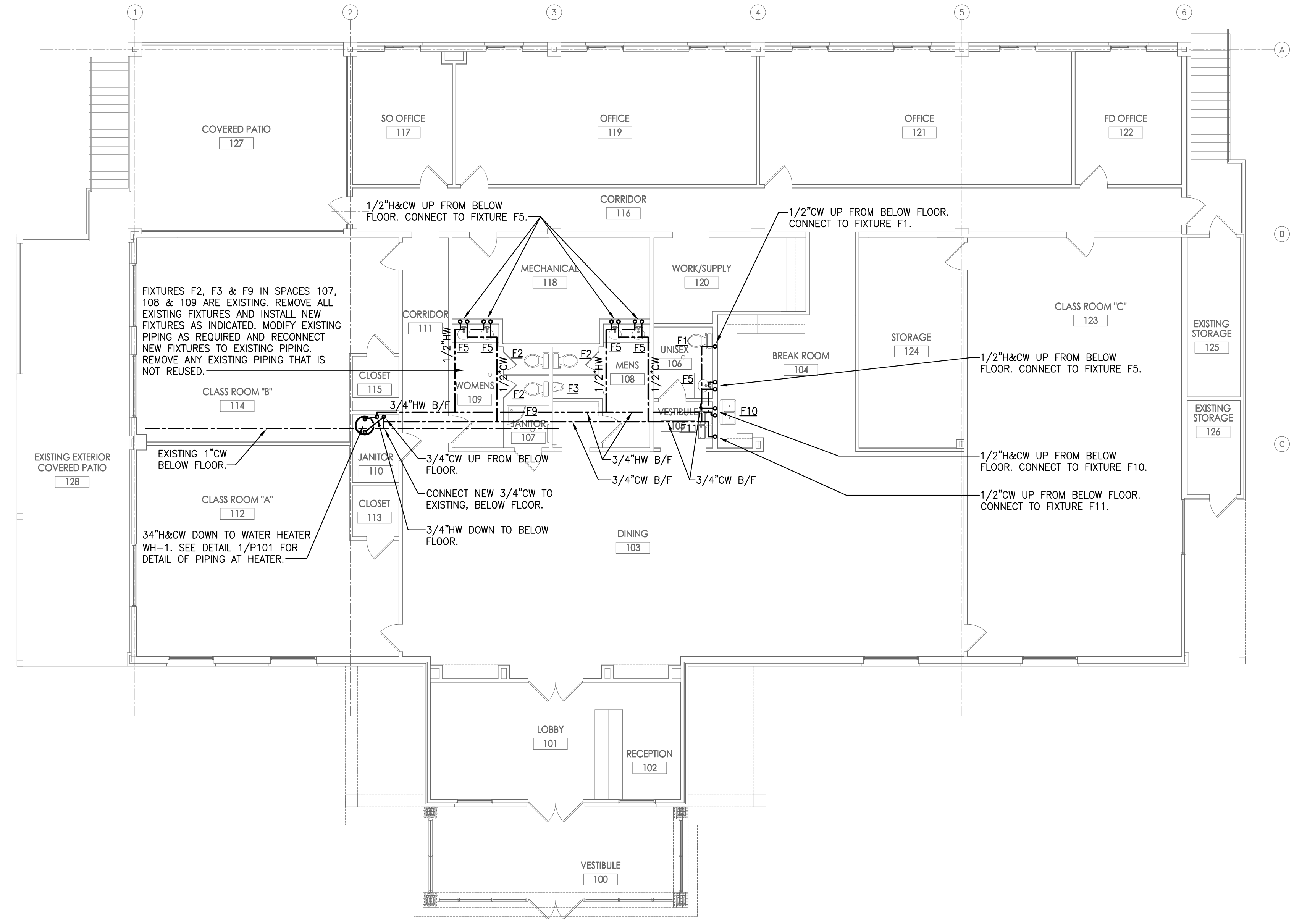
Prepared for
FAYETTE CO.

COMMISSION NO:	1465.17
SHEET TITLE:	FIRST FLOOR PLAN - SANITARY PIPING
SHEET NO:	P201

P201
NOT ISSUED FOR CONSTRUCTION

PRINTED	
DATE	COMMENTS
07.26.2018	FOR PRICING & PERMIT

This drawing is property of K.A. Oldham Design, Inc and may not be reproduced or used without the Architect's written permission. © 2017



1 **FIRST FLOOR PLAN - WATER PIPING**
P202 SCALE: 1/8" = 1'-0"


FAYETTE COUNTY TRAINING FACILITY RENOVATION

340 HEWELL ROAD
JONESBORO, GEORGIA

Prepared for
FAYETTE CO.

COMMISSION NO:	1465.17
SHEET TITLE:	FIRST FLOOR PLAN - WATER PIPING
SHEET NO:	P202

P202
NOT ISSUED FOR CONSTRUCTION