



2013 Annual Report

Fayette County Department of Fire & Emergency Services

www.fayettecountyga.gov

Incident Types

Total number of incidents	8,105
Rescue/Medical.....	6,258 (77.2%)
Fires.....	168 (2.1%)
Service Calls.....	501 (6.2%)
Good Intent Calls.....	567 (7.0%)
Hazardous Calls.....	189 (2.3%)
False Alarms.....	404 (5.0%)
Severe Weather.....	18 (0.2%)

Fire Damage Losses...\$1,180,526

Individual Unit Responses

Engine 1.....	583	Quint 2.....	671	Medic 11.....	1710
Engine 3.....	719	Quint 10.....	488	Rescue 10.....	330
Engine 5.....	470	Medic 1.....	1387	Squad 2.....	911
Engine 6.....	197	Medic 3.....	1144	Squad 4.....	1468
Engine 7.....	321	Medic 4.....	1890	Staff/Command.	1550
Engine 11.....	783	Medic 5.....	1022	Support Units.....	50

Total of all departmental units' responses..15,694

2013 STATISTICAL SUMMARY

Population Served.....	72,862
Protection Area in Square Miles.....	160.83
Number of Personnel.....	145
Number of Fire Stations.....	8
FY 2014 Fire Operating Budget.....	\$ 7,403,537
FY 2014 EMS Operating Budget.....	\$ 3,048,852
FY 2014 EMA Operating Budget.....	\$467,712
Fire Mill Rate for CY 2013 is 3.03 or \$121.20 per year on \$100,000.	
EMS Mill Rate for CY 2013 is 0.45 or \$18.00 per year on \$100,000.	

Incident Response Times

911 Call Processing Time.....	0:47
Average Turnout Time.....	0:58
Average Response Time.....	4:57
Average Ambulance Response Time.....	5:59



Fire training totaled 33,374 hours during the year. Emergency medical training totaled over 1,650 hours.

In 2013 the department conducted 2 recruit classes with 8 new cadets. Each of these recruit firefighters underwent 480 hours of rigorous mental and physical challenges over a 12 week period. All recruits then successfully completed the State and National Professional Qualifications Firefighter Level 1 and 2 testing process.



Community Emergency Medical Profile



2013 EMS Facts:

Number of Transports— 4839

Number of Non—Transports— 1977

Total Patient Contacts— 6816

Average Patient Age— 54

Leading Cause of Injury— Vehicle Accident

Leading Medical Complaint— Breathing Difficulty

STROKE WARNING SIGNS

If one or more of these signs are present, do not delay:

SUDDEN NUMBNESS OR WEAKNESS - Of the face, arm or leg. Especially on one side of the body.

SUDDEN CONFUSION - Trouble speaking or understanding.

SUDDEN TROUBLE SEEING - In one or both eyes.

SUDDEN TROUBLE WALKING - Dizziness or loss of balance or coordination.

SUDDEN SEVERE HEADACHE - With no known cause.

If you experience these signs and symptoms, **DIAL 911. Don't Drive** yourself to the hospital.



Bureau of Fire Prevention

Inspections Conducted— 1,117.

Overall Inspections conducted for 2013— 99.7%.

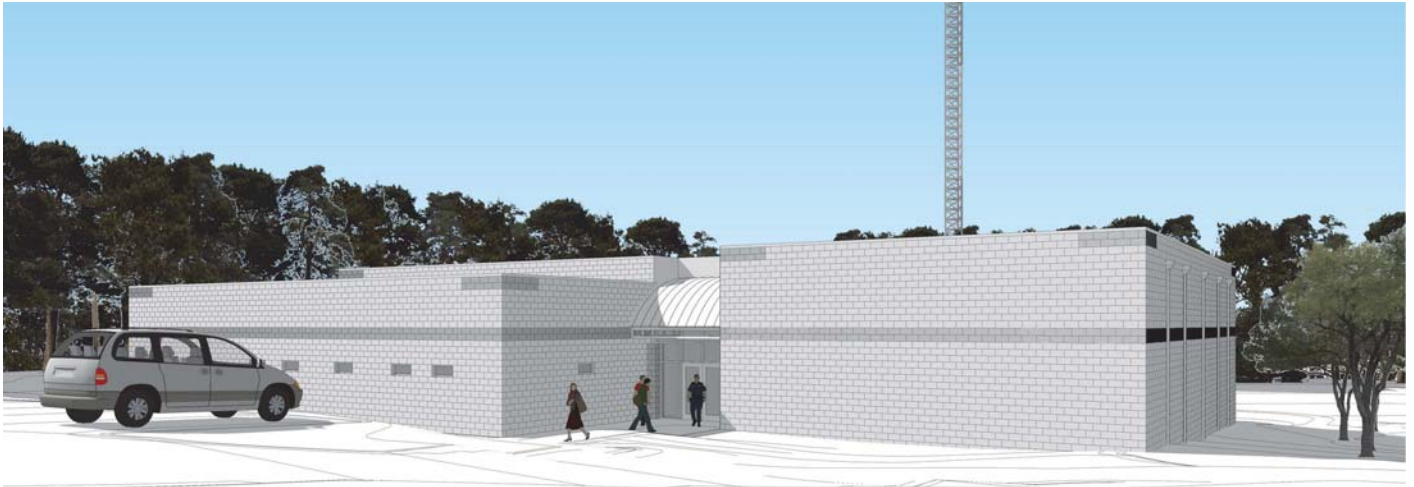
Plan Reviews— 162.

Income for BFP, Inspections fees, Plan Reviews— \$67,247.63.

Fire Investigations Conducted— 10.

2— Arrests for Felony Arson, 1-Conviction, 1-Pending





In 2013, the department began construction on the new Emergency Operations Center which will be co-located with the 911 center. This new construction will yield benefits in training as well as operations during severe weather and other disasters.

Emergency Management

The Fayette County Emergency Management Agency was recognized for meeting the Emergency Management Incentive Standard by the Georgia Emergency Management Agency. By meeting these standards it reduces the county's financial disaster match by 2 1/2 percent.

The Fayette County Faith Based Disaster Network continued to grow and in 2013 held its first Faith Based Disaster Conference. The Network engages the faith based community to train and educate citizens of Fayette County to assist their community during disasters.

Outdoor Burning Ban is May 1 through September 30 Residential Burn Permits can be obtained by calling:

770.305.5468

Check your smoke detectors and remember to change the battery.



Remember to keep a fire extinguisher nearby in the home.

ISO Rating 4/8B

Insurance Services Office

How to Contact Us

All Emergencies — **911** General Information **770.305.5414**